



# National Weekly Fed Cattle Comprehensive

Agricultural Marketing Service

Livestock, Poultry, and Grain Market News

July 19, 2022

## Weighted Average Prices

(Weekly Information from 2pm Previous Monday to 10am Current Monday; Includes Negotiated, Formula Nets, Contract Nets, & Grid Nets)"

### All Steers & Heifers (Beef Type Cattle)

Purchasing Basis	% Choice	Head	Avg Price	Week Ago Change	Year Ago Change
Dressed	> 65% Choice	287,168	\$229.97	(\$1.39) ↓	\$30.79 ↑
	< 65% Choice	39,263	\$216.92	(\$3.35) ↓	\$28.36 ↑
	Total all Grades	326,431	\$228.40	(\$1.82) ↓	\$30.55 ↑
Live	> 65% Choice	109,571	\$143.29	(\$1.43) ↓	\$19.54 ↑
	< 65% Choice	9,197	\$140.20	(\$0.80) ↓	\$19.22 ↑
	Total all Grades	118,768	\$143.05	(\$1.43) ↓	\$19.57 ↑

### Dairy Bred

Purchasing Basis	% Choice	Head	Avg Price	Week Ago Change	Year Ago Change
Dressed	> 65% Choice	19,846	\$220.38	\$2.52 ↑	\$35.65 ↑
	< 65% Choice	2,228	\$207.59	\$3.67 ↑	\$34.04 ↑
	Total all Grades	22,074	\$219.09	\$2.29 ↑	\$35.31 ↑
Live	> 65% Choice	3,782	\$133.81	(\$0.84) ↓	\$21.85 ↑
	< 65% Choice	434	\$130.96	(\$3.78) ↓	\$18.07 ↑
	Total all Grades	4,216	\$133.51	(\$1.14) ↓	\$21.45 ↑

## Spread Comparison Values

### Beef Type minus Dairy Type

(Weekly Information from 2pm Previous Monday to 10am Current Monday; Includes Negotiated, Formula Nets, Contract Nets, & Grid Nets)

Purchasing Basis	Current	Week Ago Change	Year Ago Change
Dressed	\$9.31 ↑	\$13.42 ↑	\$14.07 ↑
Live	\$9.54 ↑	\$9.83 ↑	\$11.42 ↑

### Formula Net minus Negotiated

(Beef Type Cattle; All live transactions converted to a dressed price)

### 52 Week Rolling Average

\$1.32





# National Weekly Fed Cattle Comprehensive

Agricultural Marketing Service  
Livestock, Poultry, and Grain Market News

July 19, 2022

## Formula Base minus Negotiated

(Beef Type Cattle; All live transactions converted to a dressed price)

52 Week Rolling Average

(\$2.26)



## Formula Net minus Formula Base

(Beef Type Cattle; All live transactions converted to a dressed price)

52 Week Rolling Average

\$3.58



## Grading % and Carcass Weights

(Beef Type Cattle; Includes Formula Net, Contract Net, and Grid Net; Grading % includes Choice & higher; Carcass Weight includes all grades; All live transactions converted to a dressed basis)

Grading %

80.7

Week Ago

82.1



Dressed Weight

863.1

Week Ago

865.2



## Daily Formula Base Volume

Tue Jul 12

27,795

Wed Jul 13

33,776

Thu Jul 14

39,469

Fri Jul 15

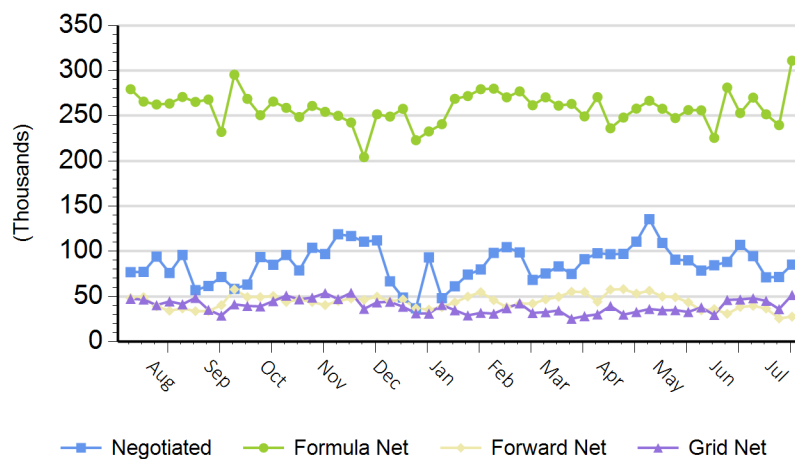
30,900

Mon Jul 18

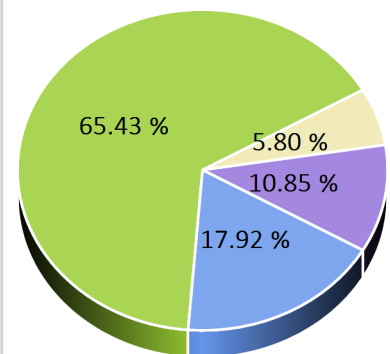
139,264

## Purchasing Basis Volume

### Weekly Purchasing Basis



### Previous Week





# National Weekly Fed Cattle Comprehensive

Agricultural Marketing Service  
Livestock, Poultry, and Grain Market News

July 19, 2022

## Weekly Negotiated Avg. Price by Delivery Period

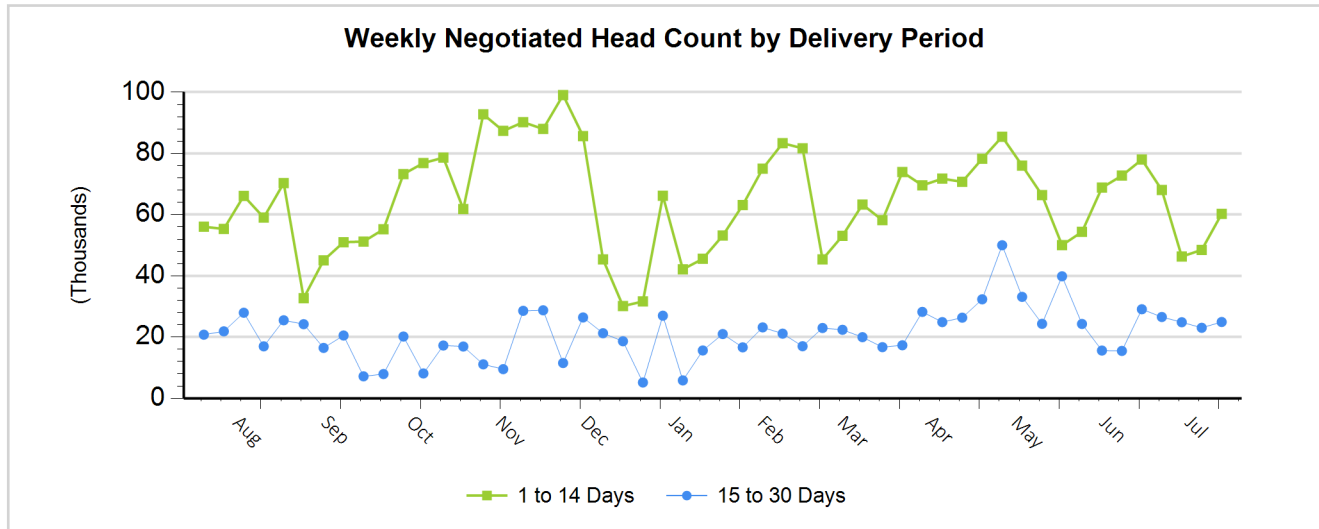
(Beef Type Cattle: All live transactions converted to dressed price)

Avg Price (1 to 14 Days)

\$225.58

Avg Price (15 to 30 Days)

\$227.64



For more Information about this report, please visit this link: [National Weekly Fed Cattle Comprehensive Overview](#)