



# National Weekly Fed Cattle Comprehensive

Agricultural Marketing Service

Livestock, Poultry, and Grain Market News

June 01, 2022

## Weighted Average Prices

(Weekly Information from 2pm Previous Monday to 10am Current Monday; Includes Negotiated, Formula Nets, Contract Nets, & Grid Nets)"

### All Steers & Heifers (Beef Type Cattle)

Purchasing Basis	% Choice	Head	Avg Price	Week Ago Change	Year Ago Change
Dressed	> 65% Choice	238,896	\$228.09	(\$1.62) ↓	\$34.38 ↑
	< 65% Choice	39,133	\$220.46	(\$2.11) ↓	\$31.71 ↑
	Total all Grades	278,029	\$227.02	(\$1.87) ↓	\$33.86 ↑
Live	> 65% Choice	88,114	\$141.38	(\$1.04) ↓	\$19.73 ↑
	< 65% Choice	9,297	\$139.38	(\$1.93) ↓	\$19.17 ↑
	Total all Grades	97,411	\$141.19	(\$1.18) ↓	\$19.71 ↑

### Dairy Bred

Purchasing Basis	% Choice	Head	Avg Price	Week Ago Change	Year Ago Change
Dressed	> 65% Choice	23,274	\$215.53	(\$1.24) ↓	\$33.16 ↑
	< 65% Choice	3,260	\$201.51	(\$3.16) ↓	\$29.87 ↑
	Total all Grades	26,534	\$213.80	(\$2.01) ↓	\$32.12 ↑
Live	> 65% Choice	2,051	\$129.22	(\$2.21) ↓	\$19.36 ↑
	< 65% Choice	587	\$126.69	(\$8.68) ↓	\$22.15 ↑
	Total all Grades	2,638	\$128.66	(\$3.08) ↓	\$18.95 ↑

## Spread Comparison Values

### Beef Type minus Dairy Type

(Weekly Information from 2pm Previous Monday to 10am Current Monday; Includes Negotiated, Formula Nets, Contract Nets, & Grid Nets)

Purchasing Basis	Current	Week Ago Change	Year Ago Change
Dressed	\$13.22 ↑	\$13.08 ↑	\$11.48 ↑
Live	\$12.53 ↑	\$10.63 ↑	\$11.77 ↑

### Formula Net minus Negotiated

(Beef Type Cattle; All live transactions converted to a dressed price)

#### 52 Week Rolling Average

\$1.52





# National Weekly Fed Cattle Comprehensive

Agricultural Marketing Service  
Livestock, Poultry, and Grain Market News

June 01, 2022

## Formula Base minus Negotiated

(Beef Type Cattle; All live transactions converted to a dressed price)

52 Week Rolling Average

(\$2.15)



## Formula Net minus Formula Base

(Beef Type Cattle; All live transactions converted to a dressed price)

52 Week Rolling Average

\$3.67



## Grading % and Carcass Weights

(Beef Type Cattle; Includes Formula Net, Contract Net, and Grid Net; Grading % includes Choice & higher; Carcass Weight includes all grades; All live transactions converted to a dressed basis)

Grading %

80.2

Week Ago

81.6



Dressed Weight

856.2

Week Ago

860.1



## Daily Formula Base Volume

Tue May 24

44,426

Wed May 25

27,951

Thu May 26

39,750

Fri May 27

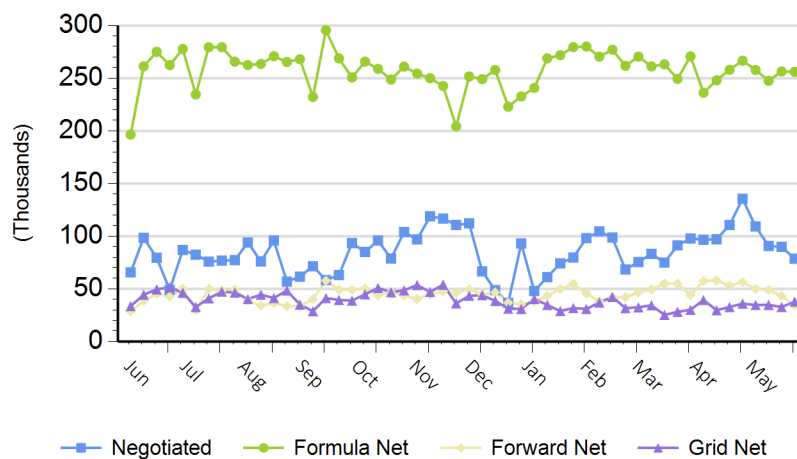
24,896

Mon May 30

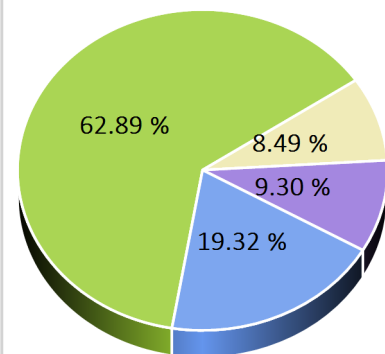
16,996

## Purchasing Basis Volume

### Weekly Purchasing Basis



### Previous Week





# National Weekly Fed Cattle Comprehensive

Agricultural Marketing Service  
Livestock, Poultry, and Grain Market News

June 01, 2022

## Weekly Negotiated Avg. Price by Delivery Period

(Beef Type Cattle: All live transactions converted to dressed price)

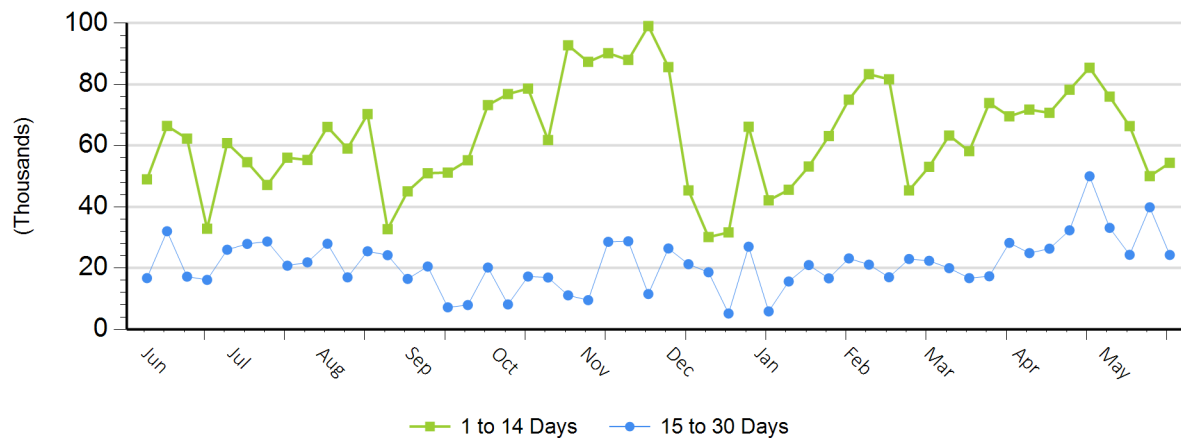
Avg Price (1 to 14 Days)

\$220.72

Avg Price (15 to 30 Days)

\$222.34

## Weekly Negotiated Head Count by Delivery Period



For more Information about this report, please visit this link: [National Weekly Fed Cattle Comprehensive Overview](#)