



National Weekly Fed Cattle Comprehensive

Agricultural Marketing Service

Livestock, Poultry, and Grain Market News

May 03, 2022

Weighted Average Prices

(Weekly Information from 2pm Previous Monday to 10am Current Monday; Includes Negotiated, Formula Nets, Contract Nets, & Grid Nets)"

All Steers & Heifers (Beef Type Cattle)

Purchasing Basis	% Choice	Head	Avg Price	Week Ago Change	Year Ago Change
Dressed	> 65% Choice	269,971	\$229.03	\$2.67 ↑	\$34.61 ↑
	< 65% Choice	43,908	\$220.01	\$1.66 ↑	\$30.70 ↑
	Total all Grades	313,879	\$227.77	\$2.35 ↑	\$33.83 ↑
Live	> 65% Choice	138,263	\$143.69	\$0.81 ↑	\$21.90 ↑
	< 65% Choice	8,427	\$140.64	\$0.81 ↑	\$19.42 ↑
	Total all Grades	146,690	\$143.52	\$0.84 ↑	\$21.79 ↑

Dairy Bred

Purchasing Basis	% Choice	Head	Avg Price	Week Ago Change	Year Ago Change
Dressed	> 65% Choice	28,818	\$213.86	\$0.97 ↑	\$33.26 ↑
	< 65% Choice	1,745	\$202.48	\$2.40 ↑	\$31.07 ↑
	Total all Grades	30,563	\$213.21	\$1.11 ↑	\$33.14 ↑
Live	> 65% Choice	1,331	\$133.80	\$4.09 ↑	\$25.49 ↑
	< 65% Choice	287	\$136.79	\$6.72 ↑	\$29.07 ↑
	Total all Grades	1,618	\$134.33	\$4.52 ↑	\$26.05 ↑

Spread Comparison Values

Beef Type minus Dairy Type

(Weekly Information from 2pm Previous Monday to 10am Current Monday; Includes Negotiated, Formula Nets, Contract Nets, & Grid Nets)

Purchasing Basis	Current	Week Ago Change	Year Ago Change
Dressed	\$14.56 ↑	\$13.32 ↑	\$13.87 ↑
Live	\$9.19 ↑	\$12.87 ↑	\$13.45 ↑

Formula Net minus Negotiated

(Beef Type Cattle; All live transactions converted to a dressed price)

52 Week Rolling Average

\$1.55





National Weekly Fed Cattle Comprehensive

Agricultural Marketing Service

Livestock, Poultry, and Grain Market News

May 03, 2022

Formula Base minus Negotiated

(Beef Type Cattle; All live transactions converted to a dressed price)

52 Week Rolling Average

(\$2.03)



Formula Net minus Formula Base

(Beef Type Cattle; All live transactions converted to a dressed price)

52 Week Rolling Average

\$3.58



Grading % and Carcass Weights

(Beef Type Cattle; Includes Formula Net, Contract Net, and Grid Net; Grading % includes Choice & higher; Carcass Weight includes all grades; All live transactions converted to a dressed basis)

Grading %

80.9

Week Ago

81.7



Dressed Weight

870.5

Week Ago

873.4



Daily Formula Base Volume

Tue Apr 26

35,517

Wed Apr 27

33,097

Thu Apr 28

38,661

Fri Apr 29

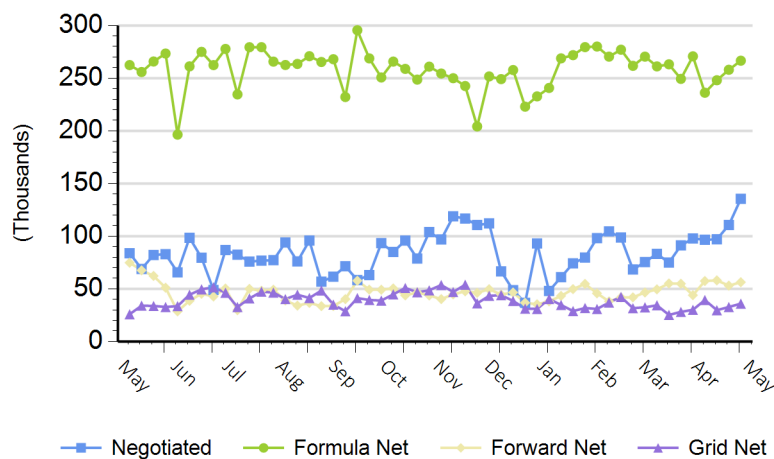
26,455

Mon May 02

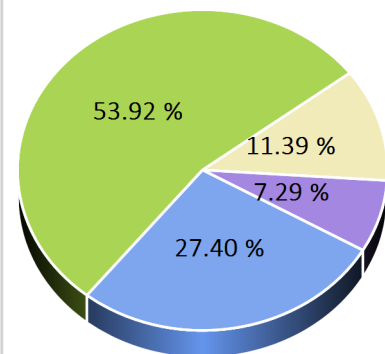
114,277

Purchasing Basis Volume

Weekly Purchasing Basis



Previous Week





National Weekly Fed Cattle Comprehensive

Agricultural Marketing Service
Livestock, Poultry, and Grain Market News

May 03, 2022

Weekly Negotiated Avg. Price by Delivery Period

(Beef Type Cattle: All live transactions converted to dressed price)

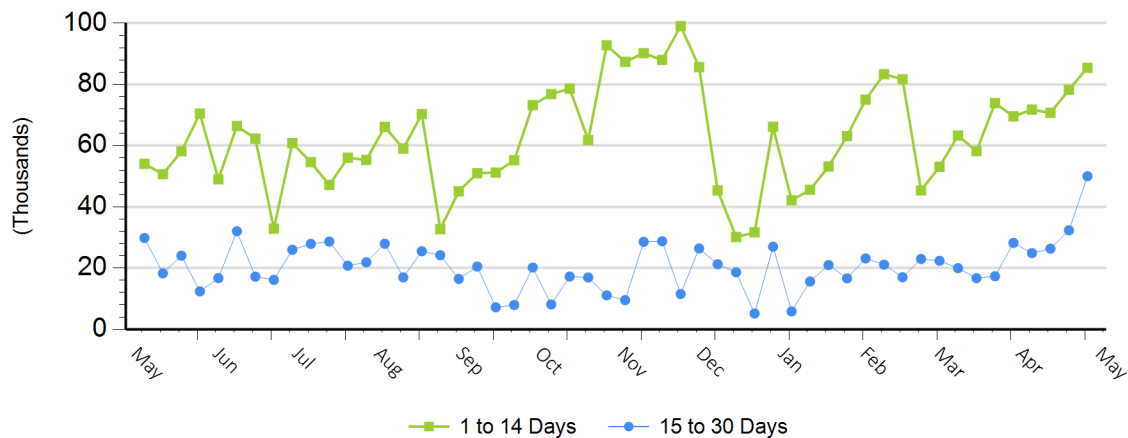
Avg Price (1 to 14 Days)

\$226.90

Avg Price (15 to 30 Days)

\$231.20

Weekly Negotiated Head Count by Delivery Period



For more Information about this report, please visit this link: [National Weekly Fed Cattle Comprehensive Overview](#)