



National Weekly Fed Cattle Comprehensive

Agricultural Marketing Service

Livestock, Poultry, and Grain Market News

March 08, 2022

Weighted Average Prices

(Weekly Information from 2pm Previous Monday to 10am Current Monday; Includes Negotiated, Formula Nets, Contract Nets, & Grid Nets)"

All Steers & Heifers (Beef Type Cattle)

Purchasing Basis	% Choice	Head	Avg Price	Week Ago Change	Year Ago Change
Dressed	> 65% Choice	264,063	\$227.76	\$1.24 ↑	\$43.11 ↑
	< 65% Choice	26,304	\$224.14	\$1.81 ↑	\$44.25 ↑
	Total all Grades	290,367	\$227.44	\$1.31 ↑	\$43.26 ↑
Live	> 65% Choice	96,277	\$142.69	(\$0.73) ↓	\$26.72 ↑
	< 65% Choice	5,807	\$141.87	(\$0.48) ↓	\$26.76 ↑
	Total all Grades	102,084	\$142.64	(\$0.73) ↓	\$26.75 ↑

Dairy Bred

Purchasing Basis	% Choice	Head	Avg Price	Week Ago Change	Year Ago Change
Dressed	> 65% Choice	24,333	\$212.07	\$2.14 ↑	\$37.02 ↑
	< 65% Choice	1,370	\$198.97	(\$1.04) ↓	\$34.66 ↑
	Total all Grades	25,703	\$211.37	\$2.45 ↑	\$36.68 ↑
Live	> 65% Choice	2,260	\$133.87	(\$0.07) ↓	\$31.66 ↑
	< 65% Choice	418	\$135.46	(\$0.57) ↓	\$36.21 ↑
	Total all Grades	2,678	\$134.12	(\$0.17) ↓	\$32.38 ↑

Spread Comparison Values

Beef Type minus Dairy Type

(Weekly Information from 2pm Previous Monday to 10am Current Monday; Includes Negotiated, Formula Nets, Contract Nets, & Grid Nets)

Purchasing Basis	Current	Week Ago Change	Year Ago Change
Dressed	\$16.07 ↑	\$17.21 ↑	\$9.49 ↑
Live	\$8.52 ↑	\$9.08 ↑	\$14.15 ↑

Formula Net minus Negotiated

(Beef Type Cattle; All live transactions converted to a dressed price)

52 Week Rolling Average

\$2.12





National Weekly Fed Cattle Comprehensive

Agricultural Marketing Service
Livestock, Poultry, and Grain Market News

March 08, 2022

Formula Base minus Negotiated

(Beef Type Cattle; All live transactions converted to a dressed price)

52 Week Rolling Average

(\$1.50)



Formula Net minus Formula Base

(Beef Type Cattle; All live transactions converted to a dressed price)

52 Week Rolling Average

\$3.62



Grading % and Carcass Weights

(Beef Type Cattle; Includes Formula Net, Contract Net, and Grid Net; Grading % includes Choice & higher; Carcass Weight includes all grades; All live transactions converted to a dressed basis)

Grading %

84.3

Week Ago

84.6



Dressed Weight

884.0

Week Ago

887.4



Daily Formula Base Volume

Tue Mar 01

37,041

Wed Mar 02

31,263

Thu Mar 03

29,975

Fri Mar 04

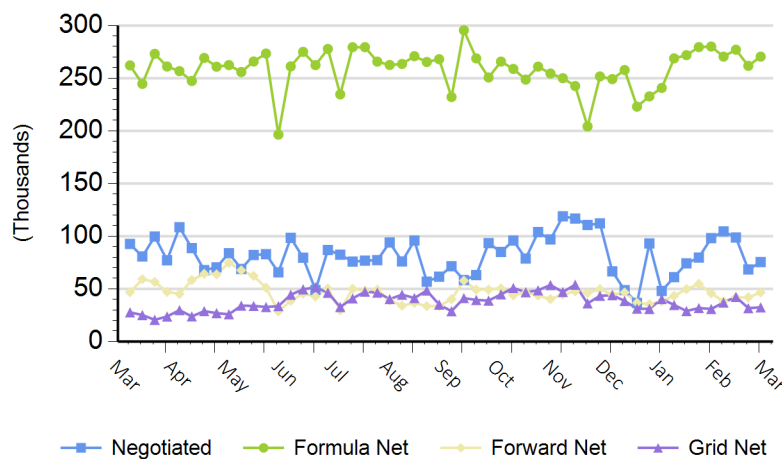
26,329

Mon Mar 07

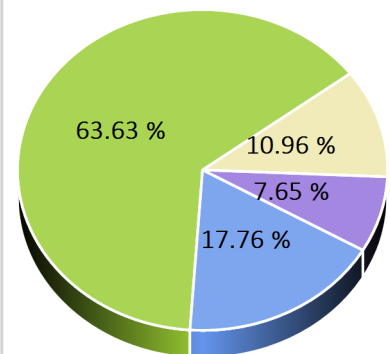
152,217

Purchasing Basis Volume

Weekly Purchasing Basis



Previous Week





National Weekly Fed Cattle Comprehensive

Agricultural Marketing Service
Livestock, Poultry, and Grain Market News

March 08, 2022

Weekly Negotiated Avg. Price by Delivery Period

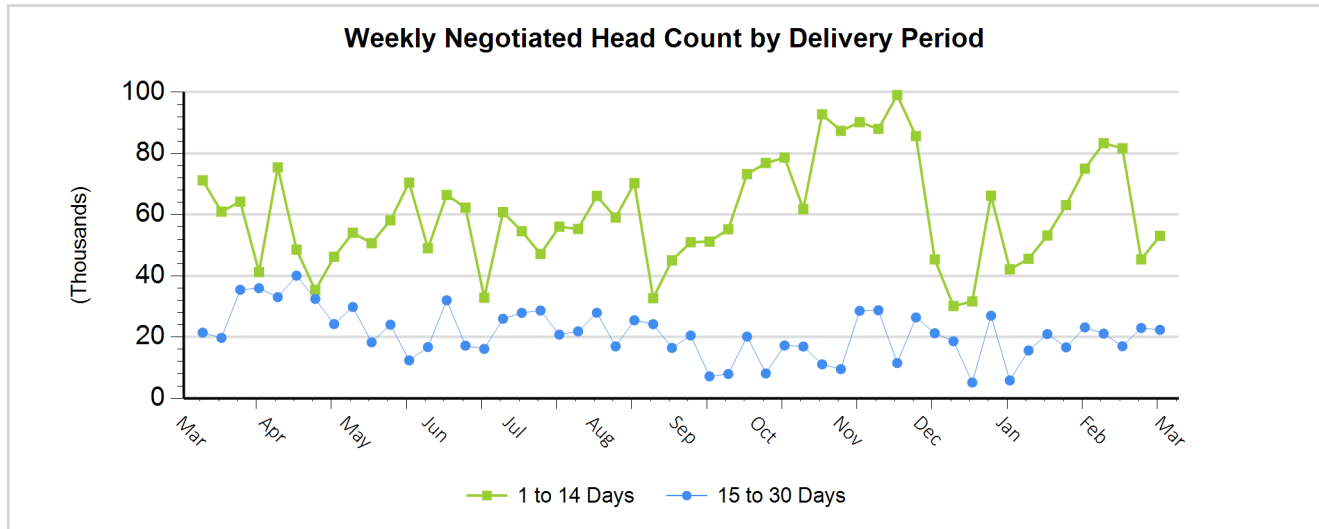
(Beef Type Cattle: All live transactions converted to dressed price)

Avg Price (1 to 14 Days)

N/A

Avg Price (15 to 30 Days)

N/A



For more Information about this report, please visit this link: [National Weekly Fed Cattle Comprehensive Overview](#)