



# National Weekly Fed Cattle Comprehensive

Agricultural Marketing Service

Livestock, Poultry, and Grain Market News

January 04, 2022

## Weighted Average Prices

(Weekly Information from 2pm Previous Monday to 10am Current Monday; Includes Negotiated, Formula Nets, Contract Nets, & Grid Nets)"

### All Steers & Heifers (Beef Type Cattle)

Purchasing Basis	% Choice	Head	Avg Price	Week Ago Change	Year Ago Change
Dressed	> 65% Choice	224,837	\$220.72	(\$2.95) ↓	\$45.32 ↑
	< 65% Choice	24,295	\$213.69	(\$4.29) ↓	\$43.12 ↑
	Total all Grades	249,132	\$220.04	(\$3.15) ↓	\$45.15 ↑
Live	> 65% Choice	109,179	\$139.45	\$0.31 ↑	\$27.51 ↑
	< 65% Choice	6,677	\$137.66	(\$1.16) ↓	\$27.03 ↑
	Total all Grades	115,856	\$139.35	\$0.22 ↑	\$27.58 ↑

### Dairy Bred

Purchasing Basis	% Choice	Head	Avg Price	Week Ago Change	Year Ago Change
Dressed	> 65% Choice	22,179	\$202.61	(\$1.67) ↓	\$36.42 ↑
	< 65% Choice	1,378	\$193.83	(\$1.11) ↓	\$38.96 ↑
	Total all Grades	23,557	\$202.09	(\$1.26) ↓	\$36.56 ↑
Live	> 65% Choice	1,094	\$127.04	(\$0.46) ↓	\$27.84 ↑
	< 65% Choice	158	\$129.77	(\$1.18) ↓	\$36.24 ↑
	Total all Grades	1,252	\$127.38	(\$1.11) ↓	\$28.28 ↑

## Spread Comparison Values

### Beef Type minus Dairy Type

(Weekly Information from 2pm Previous Monday to 10am Current Monday; Includes Negotiated, Formula Nets, Contract Nets, & Grid Nets)

Purchasing Basis	Current	Week Ago Change	Year Ago Change
Dressed	\$17.95 ↑	\$19.84 ↑	\$9.36 ↑
Live	\$11.97 ↑	\$10.64 ↑	\$12.67 ↑

### Formula Net minus Negotiated

(Beef Type Cattle; All live transactions converted to a dressed price)

### 52 Week Rolling Average

\$2.07





# National Weekly Fed Cattle Comprehensive

Agricultural Marketing Service  
Livestock, Poultry, and Grain Market News

January 04, 2022

## Formula Base minus Negotiated

(Beef Type Cattle; All live transactions converted to a dressed price)

52 Week Rolling Average

(\$1.91)



## Formula Net minus Formula Base

(Beef Type Cattle; All live transactions converted to a dressed price)

52 Week Rolling Average

\$3.98



## Grading % and Carcass Weights

(Beef Type Cattle; Includes Formula Net, Contract Net, and Grid Net; Grading % includes Choice & higher; Carcass Weight includes all grades; All live transactions converted to a dressed basis)

Grading %

82.1

Week Ago

83.8



Dressed Weight

899.5

Week Ago

894.7



## Daily Formula Base Volume

Tue Dec 28

33,625

Wed Dec 29

21,809

Thu Dec 30

26,521

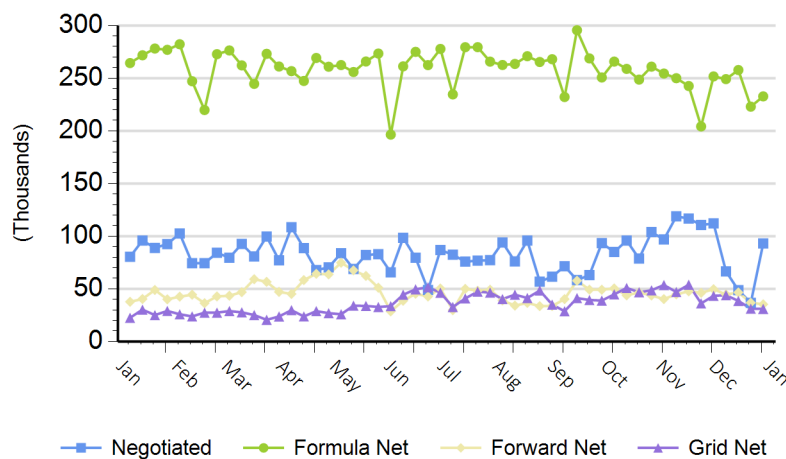
Fri Dec 31

Mon Jan 03

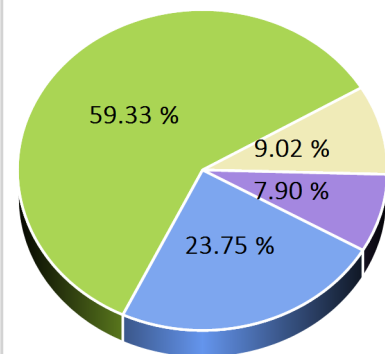
124,818

## Purchasing Basis Volume

### Weekly Purchasing Basis



### Previous Week





# National Weekly Fed Cattle Comprehensive

Agricultural Marketing Service  
Livestock, Poultry, and Grain Market News

January 04, 2022

## Weekly Negotiated Avg. Price by Delivery Period

(Beef Type Cattle: All live transactions converted to dressed price)

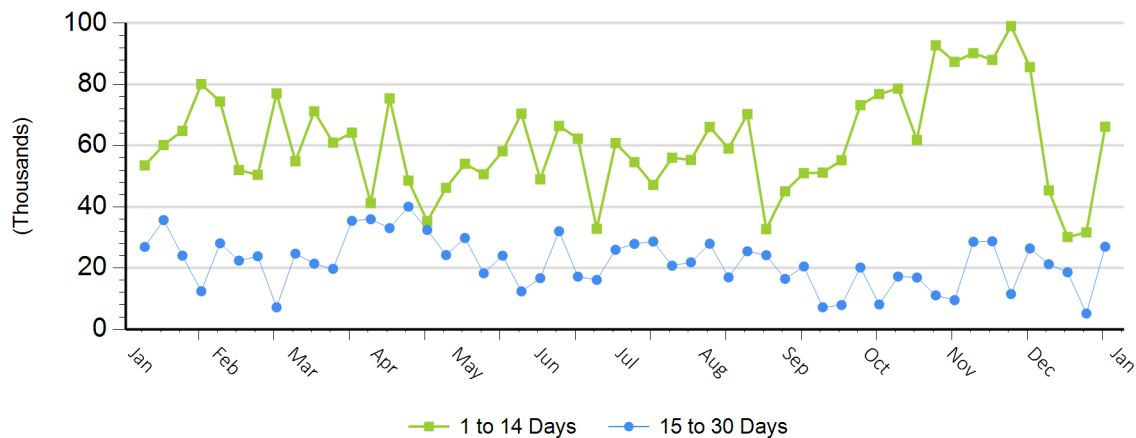
Avg Price (1 to 14 Days)

\$221.69

Avg Price (15 to 30 Days)

\$221.65

## Weekly Negotiated Head Count by Delivery Period



For more Information about this report, please visit this link: [National Weekly Fed Cattle Comprehensive Overview](#)