



# National Weekly Fed Cattle Comprehensive

Agricultural Marketing Service

Livestock, Poultry, and Grain Market News

December 28, 2021

## Weighted Average Prices

(Weekly Information from 2pm Previous Monday to 10am Current Monday; Includes Negotiated, Formula Nets, Contract Nets, & Grid Nets)"

### All Steers & Heifers (Beef Type Cattle)

Purchasing Basis	% Choice	Head	Avg Price	Week Ago Change	Year Ago Change
Dressed	> 65% Choice	215,459	\$223.67	(\$1.14) ↓	\$48.69 ↑
	< 65% Choice	19,721	\$217.98	(\$2.47) ↓	\$48.73 ↑
	Total all Grades	235,180	\$223.19	(\$1.14) ↓	\$48.67 ↑
Live	> 65% Choice	63,683	\$139.14	(\$1.44) ↓	\$28.71 ↑
	< 65% Choice	3,641	\$138.82	(\$1.22) ↓	\$29.60 ↑
	Total all Grades	67,324	\$139.13	(\$1.39) ↓	\$28.82 ↑

### Dairy Bred

Purchasing Basis	% Choice	Head	Avg Price	Week Ago Change	Year Ago Change
Dressed	> 65% Choice	20,505	\$204.28	(\$0.63) ↓	\$35.40 ↑
	< 65% Choice	2,255	\$194.94	(\$0.15) ↓	\$37.70 ↑
	Total all Grades	22,760	\$203.35	(\$0.80) ↓	\$35.30 ↑
Live	> 65% Choice	828	\$127.50	(\$4.13) ↓	\$28.86 ↑
	< 65% Choice	332	\$130.95	\$0.47 ↑	\$36.81 ↑
	Total all Grades	1,160	\$128.49	(\$2.95) ↓	\$30.29 ↑

## Spread Comparison Values

### Beef Type minus Dairy Type

(Weekly Information from 2pm Previous Monday to 10am Current Monday; Includes Negotiated, Formula Nets, Contract Nets, & Grid Nets)

Purchasing Basis	Current	Week Ago Change	Year Ago Change
Dressed	\$19.84 ↑	\$20.18 ↑	\$6.47 ↑
Live	\$10.64 ↑	\$9.08 ↑	\$12.11 ↑

### Formula Net minus Negotiated

(Beef Type Cattle; All live transactions converted to a dressed price)

#### 52 Week Rolling Average

\$2.26





# National Weekly Fed Cattle Comprehensive

Agricultural Marketing Service  
Livestock, Poultry, and Grain Market News

December 28, 2021

## Formula Base minus Negotiated

(Beef Type Cattle; All live transactions converted to a dressed price)

52 Week Rolling Average

(\$1.68)



## Formula Net minus Formula Base

(Beef Type Cattle; All live transactions converted to a dressed price)

52 Week Rolling Average

\$3.94



## Grading % and Carcass Weights

(Beef Type Cattle; Includes Formula Net, Contract Net, and Grid Net; Grading % includes Choice & higher; Carcass Weight includes all grades; All live transactions converted to a dressed basis)

Grading %

83.8

Week Ago

81.5



Dressed Weight

894.7

Week Ago

898.4



## Daily Formula Base Volume

Tue Dec 21

35,974

Wed Dec 22

29,454

Thu Dec 23

26,339

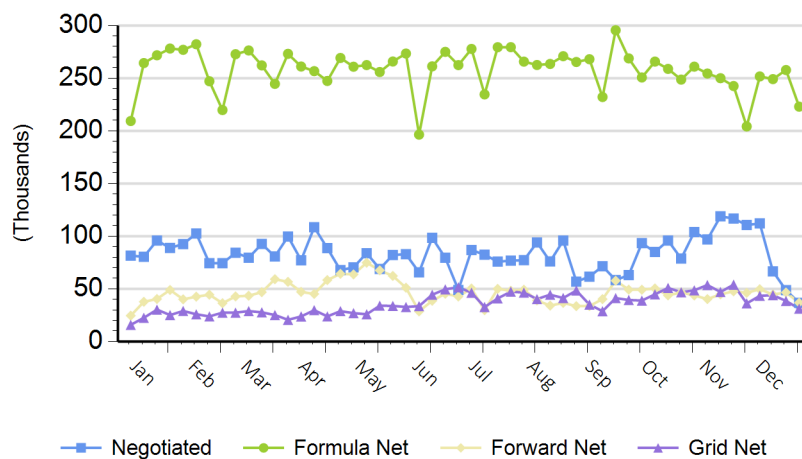
Fri Dec 24

Mon Dec 27

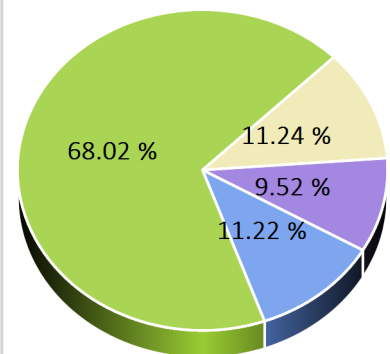
135,207

## Purchasing Basis Volume

### Weekly Purchasing Basis



### Previous Week





# National Weekly Fed Cattle Comprehensive

Agricultural Marketing Service  
Livestock, Poultry, and Grain Market News

December 28, 2021

## Weekly Negotiated Avg. Price by Delivery Period

(Beef Type Cattle: All live transactions converted to dressed price)

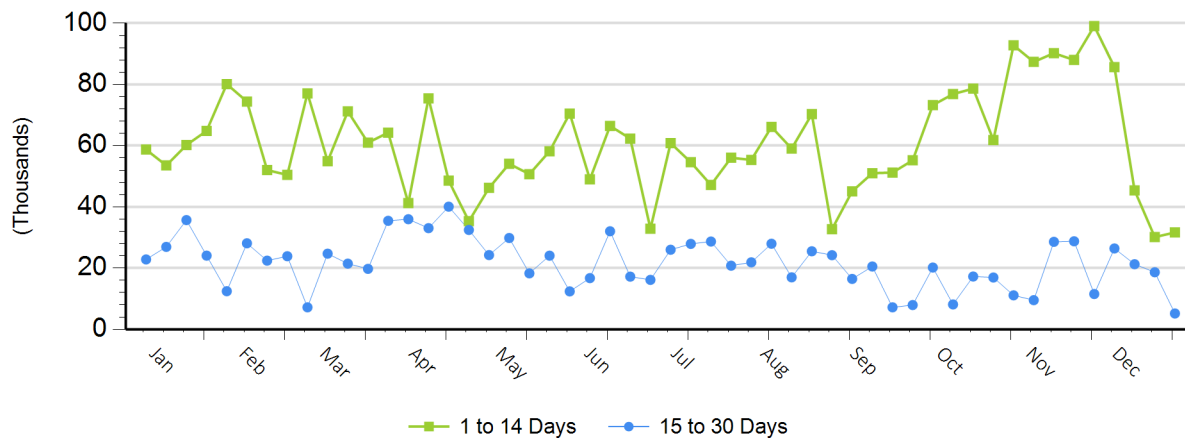
Avg Price (1 to 14 Days)

\$215.83

Avg Price (15 to 30 Days)

\$217.93

## Weekly Negotiated Head Count by Delivery Period



For more Information about this report, please visit this link: [National Weekly Fed Cattle Comprehensive Overview](#)