



# National Weekly Fed Cattle Comprehensive

Agricultural Marketing Service

Livestock, Poultry, and Grain Market News

December 07, 2021

## Weighted Average Prices

(Weekly Information from 2pm Previous Monday to 10am Current Monday; Includes Negotiated, Formula Nets, Contract Nets, & Grid Nets)"

### All Steers & Heifers (Beef Type Cattle)

Purchasing Basis	% Choice	Head	Avg Price	Week Ago Change	Year Ago Change
Dressed	> 65% Choice	247,106	\$218.41	\$4.27 ↑	\$40.42 ↑
	< 65% Choice	34,505	\$212.96	\$5.56 ↑	\$39.38 ↑
	Total all Grades	281,611	\$217.75	\$4.44 ↑	\$40.11 ↑
Live	> 65% Choice	132,379	\$139.83	\$2.74 ↑	\$27.75 ↑
	< 65% Choice	10,632	\$137.82	\$3.17 ↑	\$26.01 ↑
	Total all Grades	143,011	\$139.68	\$2.76 ↑	\$27.64 ↑

### Dairy Bred

Purchasing Basis	% Choice	Head	Avg Price	Week Ago Change	Year Ago Change
Dressed	> 65% Choice	24,303	\$201.02	\$3.31 ↑	\$31.21 ↑
	< 65% Choice	2,328	\$185.35	\$3.21 ↑	\$29.45 ↑
	Total all Grades	26,631	\$199.65	\$4.19 ↑	\$30.93 ↑
Live	> 65% Choice	991	\$128.09	\$5.69 ↑	\$28.04 ↑
	< 65% Choice	67	\$131.67	\$5.06 ↑	\$32.94 ↑
	Total all Grades	1,058	\$128.32	\$5.79 ↑	\$28.34 ↑

## Spread Comparison Values

### Beef Type minus Dairy Type

(Weekly Information from 2pm Previous Monday to 10am Current Monday; Includes Negotiated, Formula Nets, Contract Nets, & Grid Nets)

Purchasing Basis	Current	Week Ago Change	Year Ago Change
Dressed	\$18.10 ↑	\$17.85 ↑	\$8.92 ↑
Live	\$11.36 ↑	\$14.39 ↑	\$12.06 ↑

### Formula Net minus Negotiated

(Beef Type Cattle; All live transactions converted to a dressed price)

#### 52 Week Rolling Average

\$1.58





# National Weekly Fed Cattle Comprehensive

Agricultural Marketing Service  
Livestock, Poultry, and Grain Market News

December 07, 2021

## Formula Base minus Negotiated

(Beef Type Cattle; All live transactions converted to a dressed price)

52 Week Rolling Average

(\$2.43)



## Formula Net minus Formula Base

(Beef Type Cattle; All live transactions converted to a dressed price)

52 Week Rolling Average

\$4.01



## Grading % and Carcass Weights

(Beef Type Cattle; Includes Formula Net, Contract Net, and Grid Net; Grading % includes Choice & higher; Carcass Weight includes all grades; All live transactions converted to a dressed basis)

Grading %

81.2

Week Ago

81.3



Dressed Weight

892.3

Week Ago

894.9



## Daily Formula Base Volume

Tue Nov 30

48,407

Wed Dec 01

32,367

Thu Dec 02

18,164

Fri Dec 03

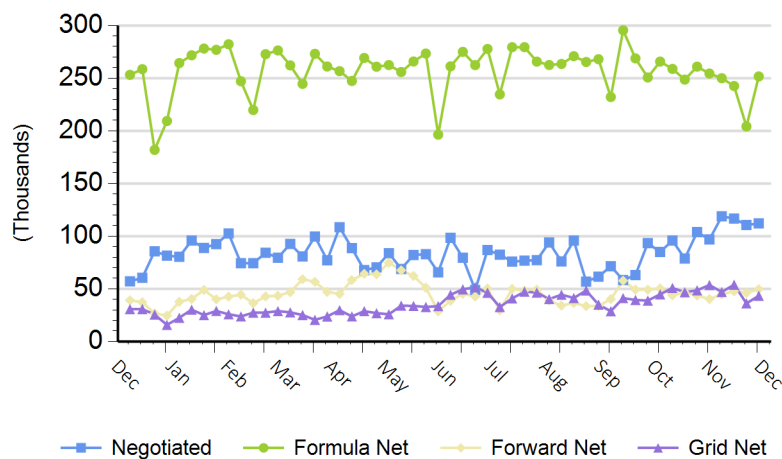
20,158

Mon Dec 06

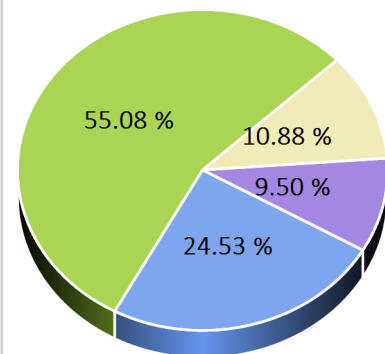
145,471

## Purchasing Basis Volume

### Weekly Purchasing Basis



### Previous Week





# National Weekly Fed Cattle Comprehensive

Agricultural Marketing Service  
Livestock, Poultry, and Grain Market News

December 07, 2021

## Weekly Negotiated Avg. Price by Delivery Period

(Beef Type Cattle: All live transactions converted to dressed price)

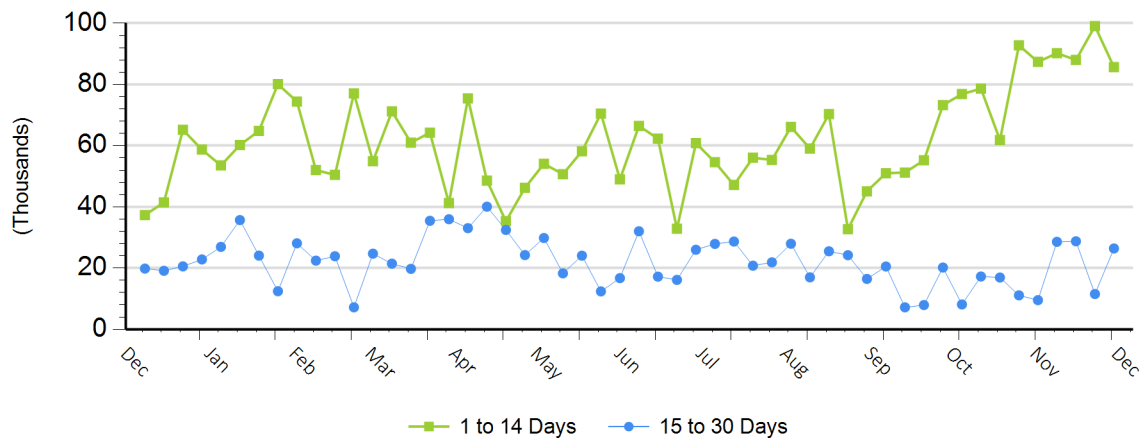
Avg Price (1 to 14 Days)

\$222.96

Avg Price (15 to 30 Days)

\$220.76

## Weekly Negotiated Head Count by Delivery Period



For more Information about this report, please visit this link: [National Weekly Fed Cattle Comprehensive Overview](#)