



# National Weekly Fed Cattle Comprehensive

Agricultural Marketing Service

Livestock, Poultry, and Grain Market News

October 12, 2021

## Weighted Average Prices

(Weekly Information from 2pm Previous Monday to 10am Current Monday; Includes Negotiated, Formula Nets, Contract Nets, & Grid Nets)"

### All Steers & Heifers (Beef Type Cattle)

Purchasing Basis	% Choice	Head	Avg Price	Week Ago Change	Year Ago Change
Dressed	> 65% Choice	266,184	\$201.09	(\$0.91) ↓	\$30.76 ↑
	< 65% Choice	38,954	\$193.45	\$0.50 ↑	\$26.36 ↑
	Total all Grades	305,138	\$200.12	(\$0.83) ↓	\$30.06 ↑
Live	> 65% Choice	108,966	\$125.28	\$0.00 ↓	\$16.62 ↑
	< 65% Choice	6,601	\$123.99	\$0.36 ↑	\$16.32 ↑
	Total all Grades	115,567	\$125.21	\$0.09 ↑	\$16.67 ↑

### Dairy Bred

Purchasing Basis	% Choice	Head	Avg Price	Week Ago Change	Year Ago Change
Dressed	> 65% Choice	19,279	\$190.28	(\$0.50) ↓	\$27.85 ↑
	< 65% Choice	2,157	\$177.78	\$0.71 ↑	\$27.68 ↑
	Total all Grades	21,436	\$189.02	(\$0.04) ↓	\$27.51 ↑
Live	> 65% Choice	1,091	\$115.15	(\$0.30) ↓	\$19.35 ↑
	< 65% Choice			(\$109.69) ↓	(\$92.18) ↓
	Total all Grades	1,091	\$115.15	(\$0.15) ↓	\$20.09 ↑

## Spread Comparison Values

### Beef Type minus Dairy Type

(Weekly Information from 2pm Previous Monday to 10am Current Monday; Includes Negotiated, Formula Nets, Contract Nets, & Grid Nets)

Purchasing Basis	Current	Week Ago Change	Year Ago Change
Dressed	\$11.10 ↑	\$11.89 ↑	\$8.55 ↑
Live	\$10.06 ↑	\$9.82 ↑	\$13.48 ↑

### Formula Net minus Negotiated

(Beef Type Cattle; All live transactions converted to a dressed price)

#### 52 Week Rolling Average

\$3.65





# National Weekly Fed Cattle Comprehensive

Agricultural Marketing Service  
Livestock, Poultry, and Grain Market News

October 12, 2021

## Formula Base minus Negotiated

(Beef Type Cattle; All live transactions converted to a dressed price)

52 Week Rolling Average

(\$0.33)



## Formula Net minus Formula Base

(Beef Type Cattle; All live transactions converted to a dressed price)

52 Week Rolling Average

\$3.98



## Grading % and Carcass Weights

(Beef Type Cattle; Includes Formula Net, Contract Net, and Grid Net; Grading % includes Choice & higher; Carcass Weight includes all grades; All live transactions converted to a dressed basis)

Grading %

80.5

Week Ago

80.7



Dressed Weight

888.2

Week Ago

879.1



## Daily Formula Base Voume

Tue Oct 05

31,126

Wed Oct 06

26,913

Thu Oct 07

25,243

Fri Oct 08

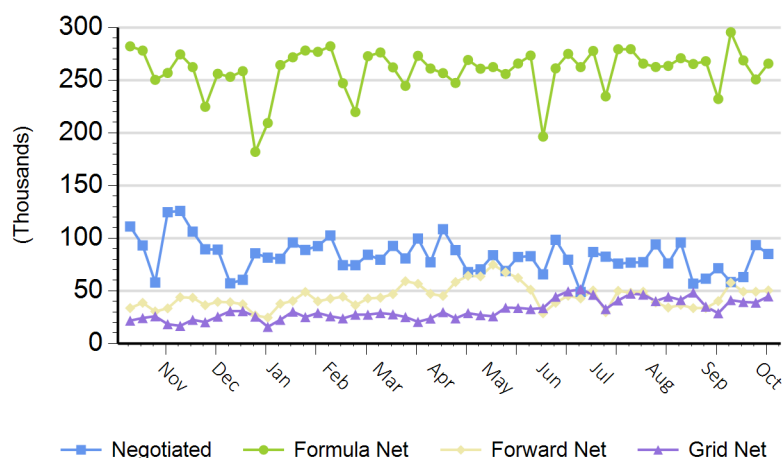
20,556

Mon Oct 11

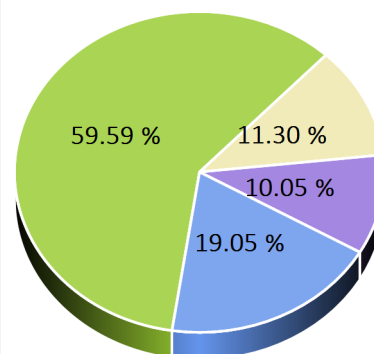
138,970

## Purchasing Basis Volume

### Weekly Purchasing Basis



### Previous Week





# National Weekly Fed Cattle Comprehensive

Agricultural Marketing Service  
Livestock, Poultry, and Grain Market News

October 12, 2021

## Weekly Negotiated Avg. Price by Delivery Period

(Beef Type Cattle: All live transactions converted to dressed price)

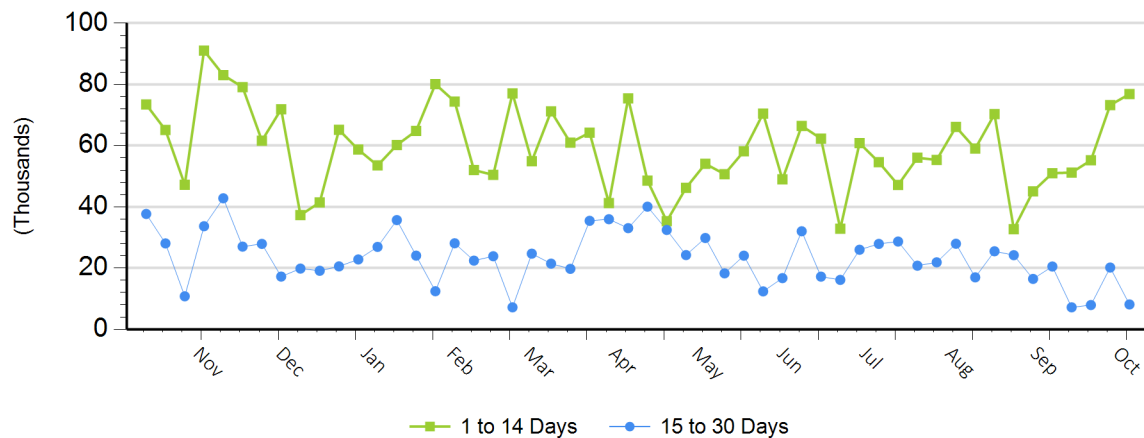
**Avg Price (1 to 14 Days)**

\$195.33

**Avg Price (15 to 30 Days)**

\$193.20

## Weekly Negotiated Head Count by Delivery Period



For more Information about this report, please visit this link: [National Weekly Fed Cattle Comprehensive Overview](#)