



# National Weekly Fed Cattle Comprehensive

Agricultural Marketing Service

Livestock, Poultry, and Grain Market News

August 17, 2021

## Weighted Average Prices

(Weekly Information from 2pm Previous Monday to 10am Current Monday; Includes Negotiated, Formula Nets, Contract Nets, & Grid Nets)"

### All Steers & Heifers (Beef Type Cattle)

Purchasing Basis	% Choice	Head	Avg Price	Week Ago Change	Year Ago Change
Dressed	> 65% Choice	257,250	\$197.60	\$0.83 ↑	\$35.50 ↑
	< 65% Choice	27,404	\$189.43	\$1.16 ↑	\$32.90 ↑
	Total all Grades	284,654	\$196.81	\$0.82 ↑	\$35.04 ↑
Live	> 65% Choice	96,316	\$123.97	(\$0.12) ↓	\$19.02 ↑
	< 65% Choice	11,998	\$121.70	\$1.03 ↑	\$19.42 ↑
	Total all Grades	108,314	\$123.72	\$0.02 ↑	\$19.10 ↑

### Dairy Bred

Purchasing Basis	% Choice	Head	Avg Price	Week Ago Change	Year Ago Change
Dressed	> 65% Choice	18,924	\$185.70	\$0.22 ↑	\$29.42 ↑
	< 65% Choice	1,182	\$176.04	(\$1.38) ↓	\$27.89 ↑
	Total all Grades	20,106	\$185.14	\$0.53 ↑	\$29.48 ↑
Live	> 65% Choice	1,492	\$114.80	\$3.68 ↑	\$23.65 ↑
	< 65% Choice	29	\$102.25	\$0.08 ↑	\$12.58 ↑
	Total all Grades	1,521	\$114.56	\$4.43 ↑	\$23.48 ↑

## Spread Comparison Values

### Beef Type minus Dairy Type

(Weekly Information from 2pm Previous Monday to 10am Current Monday; Includes Negotiated, Formula Nets, Contract Nets, & Grid Nets)

Purchasing Basis	Current	Week Ago Change	Year Ago Change
Dressed	\$11.67 ↑	\$11.38 ↑	\$6.11 ↑
Live	\$9.16 ↑	\$13.57 ↑	\$13.54 ↑

### Formula Net minus Negotiated

(Beef Type Cattle; All live transactions converted to a dressed price)

#### 52 Week Rolling Average

\$3.39





# National Weekly Fed Cattle Comprehensive

Agricultural Marketing Service  
Livestock, Poultry, and Grain Market News

August 17, 2021

## Formula Base minus Negotiated

(Beef Type Cattle; All live transactions converted to a dressed price)

52 Week Rolling Average

(\$0.17)



## Formula Net minus Formula Base

(Beef Type Cattle; All live transactions converted to a dressed price)

52 Week Rolling Average

\$3.56



## Grading % and Carcass Weights

(Beef Type Cattle; Includes Formula Net, Contract Net, and Grid Net; Grading % includes Choice & higher; Carcass Weight includes all grades; All live transactions converted to a dressed basis)

Grading %

80.9

Week Ago

80.6



Dressed Weight

865.1

Week Ago

862.8



## Daily Formula Base Voume

Tue Aug 10

31,967

Wed Aug 11

32,127

Thu Aug 12

24,699

Fri Aug 13

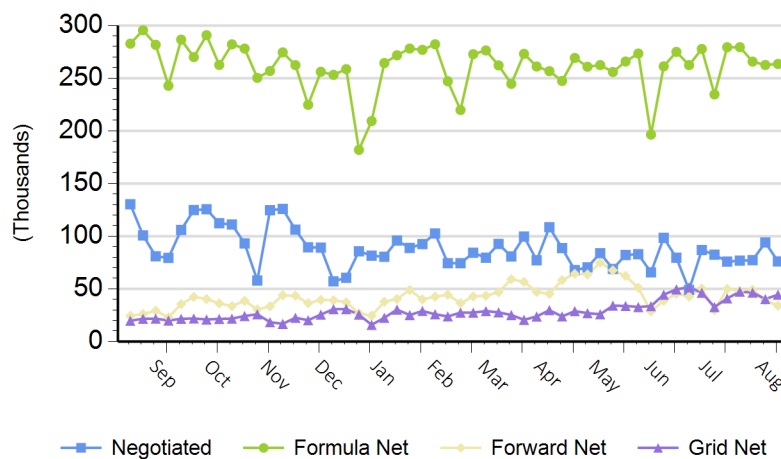
21,325

Mon Aug 16

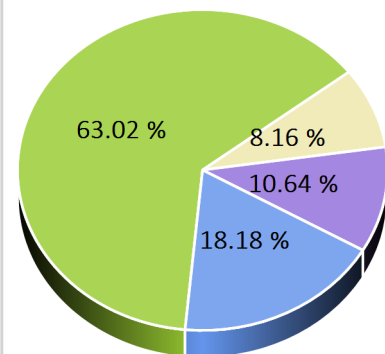
137,919

## Purchasing Basis Volume

### Weekly Purchasing Basis



### Previous Week





# National Weekly Fed Cattle Comprehensive

Agricultural Marketing Service  
Livestock, Poultry, and Grain Market News

August 17, 2021

## Weekly Negotiated Avg. Price by Delivery Period

(Beef Type Cattle: All live transactions converted to dressed price)

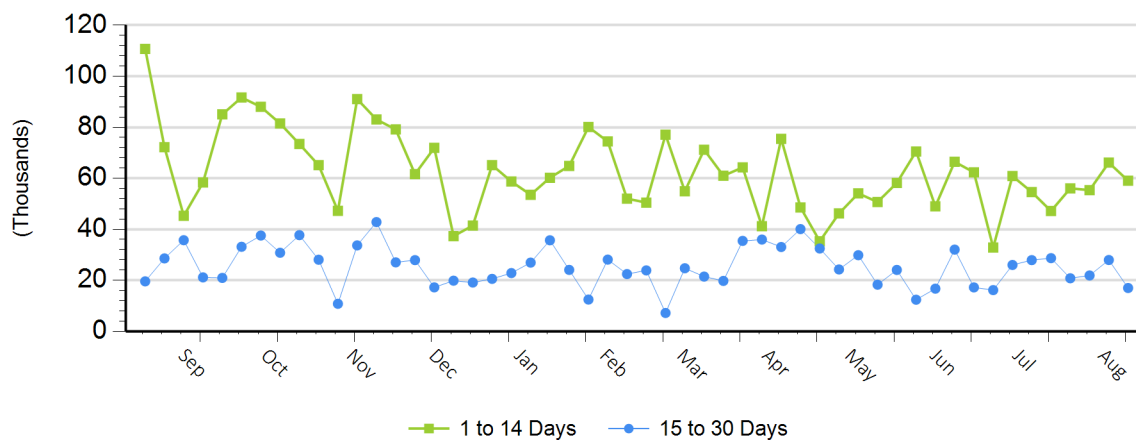
**Avg Price (1 to 14 Days)**

\$195.59

**Avg Price (15 to 30 Days)**

\$201.05

## Weekly Negotiated Head Count by Delivery Period



For more Information about this report, please visit this link: [National Weekly Fed Cattle Comprehensive Overview](#)