



# National Weekly Fed Cattle Comprehensive

Agricultural Marketing Service

Livestock, Poultry, and Grain Market News

August 10, 2021

## Weighted Average Prices

(Weekly Information from 2pm Previous Monday to 10am Current Monday; Includes Negotiated, Formula Nets, Contract Nets, & Grid Nets)"

### All Steers & Heifers (Beef Type Cattle)

Purchasing Basis	% Choice	Head	Avg Price	Week Ago Change	Year Ago Change
Dressed	> 65% Choice	263,703	\$196.77	(\$0.35) ↓	\$37.62 ↑
	< 65% Choice	26,540	\$188.27	\$0.30 ↑	\$33.85 ↑
	Total all Grades	290,243	\$195.99	(\$0.21) ↓	\$37.17 ↑
Live	> 65% Choice	104,877	\$124.09	\$1.10 ↑	\$22.30 ↑
	< 65% Choice	13,482	\$120.67	(\$0.05) ↓	\$20.60 ↑
	Total all Grades	118,359	\$123.70	\$1.04 ↑	\$22.16 ↑

### Dairy Bred

Purchasing Basis	% Choice	Head	Avg Price	Week Ago Change	Year Ago Change
Dressed	> 65% Choice	19,812	\$185.48	\$0.02 ↑	\$30.68 ↑
	< 65% Choice	2,414	\$177.42	\$4.42 ↑	\$31.75 ↑
	Total all Grades	22,226	\$184.61	\$0.16 ↑	\$30.95 ↑
Live	> 65% Choice	2,507	\$111.12	\$0.54 ↑	\$23.43 ↑
	< 65% Choice	311	\$102.17	(\$4.19) ↓	\$8.90 ↑
	Total all Grades	2,818	\$110.13	(\$0.12) ↓	\$21.87 ↑

## Spread Comparison Values

### Beef Type minus Dairy Type

(Weekly Information from 2pm Previous Monday to 10am Current Monday; Includes Negotiated, Formula Nets, Contract Nets, & Grid Nets)

Purchasing Basis	Current	Week Ago Change	Year Ago Change
Dressed	\$11.38 ↑	\$11.75 ↑	\$5.16 ↑
Live	\$13.57 ↑	\$12.41 ↑	\$13.28 ↑

### Formula Net minus Negotiated

(Beef Type Cattle; All live transactions converted to a dressed price)

### 52 Week Rolling Average

\$3.33





# National Weekly Fed Cattle Comprehensive

Agricultural Marketing Service  
Livestock, Poultry, and Grain Market News

August 10, 2021

## Formula Base minus Negotiated

(Beef Type Cattle; All live transactions converted to a dressed price)

52 Week Rolling Average

(\$0.24)



## Formula Net minus Formula Base

(Beef Type Cattle; All live transactions converted to a dressed price)

52 Week Rolling Average

\$3.57



## Grading % and Carcass Weights

(Beef Type Cattle; Includes Formula Net, Contract Net, and Grid Net; Grading % includes Choice & higher; Carcass Weight includes all grades; All live transactions converted to a dressed basis)

Grading %

80.6

Week Ago

80.3



Dressed Weight

862.8

Week Ago

866.9



## Daily Formula Base Volume

Tue Aug 03

36,377

Wed Aug 04

34,089

Thu Aug 05

25,678

Fri Aug 06

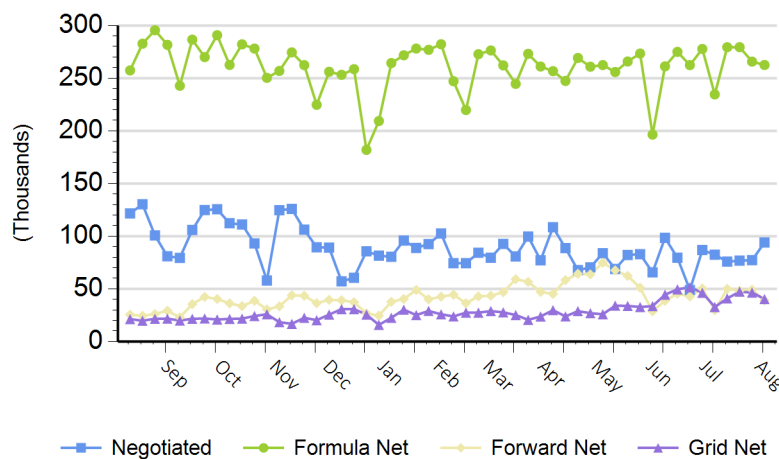
24,367

Mon Aug 09

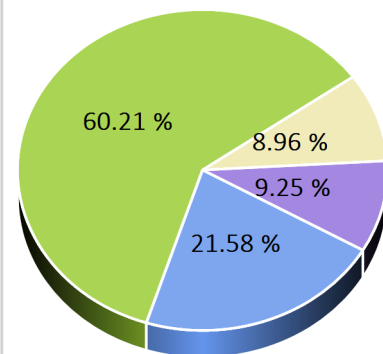
156,924

## Purchasing Basis Volume

### Weekly Purchasing Basis



### Previous Week





# National Weekly Fed Cattle Comprehensive

Agricultural Marketing Service  
Livestock, Poultry, and Grain Market News

August 10, 2021

## Weekly Negotiated Avg. Price by Delivery Period

(Beef Type Cattle: All live transactions converted to dressed price)

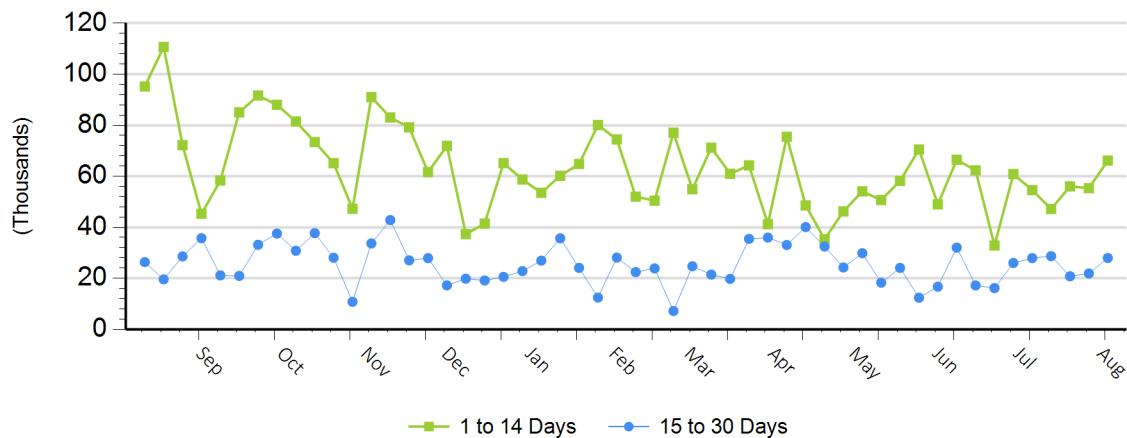
**Avg Price (1 to 14 Days)**

\$195.87

**Avg Price (15 to 30 Days)**

\$198.00

## Weekly Negotiated Head Count by Delivery Period



For more Information about this report, please visit this link: [National Weekly Fed Cattle Comprehensive Overview](#)