



National Weekly Fed Cattle Comprehensive

Agricultural Marketing Service

Livestock, Poultry, and Grain Market News

May 04, 2021

Weighted Average Prices

(Weekly Information from 2pm Previous Monday to 10am Current Monday; Includes Negotiated, Formula Nets, Contract Nets, & Grid Nets)"

All Steers & Heifers (Beef Type Cattle)

Purchasing Basis	% Choice	Head	Avg Price	Week Ago Change	Year Ago Change
Dressed	> 65% Choice	263,100	\$194.42	(\$0.91) ↓	\$28.27 ↑
	< 65% Choice	27,289	\$189.31	(\$0.22) ↓	\$30.57 ↑
	Total all Grades	290,389	\$193.94	(\$0.82) ↓	\$28.44 ↑
Live	> 65% Choice	88,181	\$121.79	(\$1.06) ↓	\$18.08 ↑
	< 65% Choice	10,395	\$121.22	\$0.44 ↑	\$19.64 ↑
	Total all Grades	98,576	\$121.73	(\$0.96) ↓	\$18.26 ↑

Dairy Bred

Purchasing Basis	% Choice	Head	Avg Price	Week Ago Change	Year Ago Change
Dressed	> 65% Choice	23,445	\$180.60	(\$0.09) ↓	\$15.72 ↑
	< 65% Choice	1,428	\$171.41	\$0.52 ↑	\$16.96 ↑
	Total all Grades	24,873	\$180.07	\$0.27 ↑	\$16.56 ↑
Live	> 65% Choice	5,168	\$108.31	(\$2.03) ↓	\$9.72 ↑
	< 65% Choice	283	\$107.72	\$5.64 ↑	\$13.91 ↑
	Total all Grades	5,451	\$108.28	(\$1.58) ↓	\$12.44 ↑

Spread Comparison Values

Beef Type minus Dairy Type

(Weekly Information from 2pm Previous Monday to 10am Current Monday; Includes Negotiated, Formula Nets, Contract Nets, & Grid Nets)

Purchasing Basis	Current	Week Ago Change	Year Ago Change
Dressed	\$13.87 ↑	\$14.96 ↑	\$1.99 ↑
Live	\$13.45 ↑	\$12.83 ↑	\$7.63 ↑

Formula Net minus Negotiated

(Beef Type Cattle; All live transactions converted to a dressed price)

52 Week Rolling Average

\$3.23





National Weekly Fed Cattle Comprehensive

Agricultural Marketing Service
Livestock, Poultry, and Grain Market News

May 04, 2021

Formula Base minus Negotiated

(Beef Type Cattle; All live transactions converted to a dressed price)

52 Week Rolling Average

\$0.07



Formula Net minus Formula Base

(Beef Type Cattle; All live transactions converted to a dressed price)

52 Week Rolling Average

\$3.16



Grading % and Carcass Weights

(Beef Type Cattle; Includes Formula Net, Contract Net, and Grid Net; Grading % includes Choice & higher; Carcass Weight includes all grades; All live transactions converted to a dressed basis)

Grading %

82.5

Week Ago

83.1



Dressed Weight

860.1

Week Ago

869.1



Daily Formula Base Voume

Tue Apr 27

75,990

Wed Apr 28

31,939

Thu Apr 29

26,145

Fri Apr 30

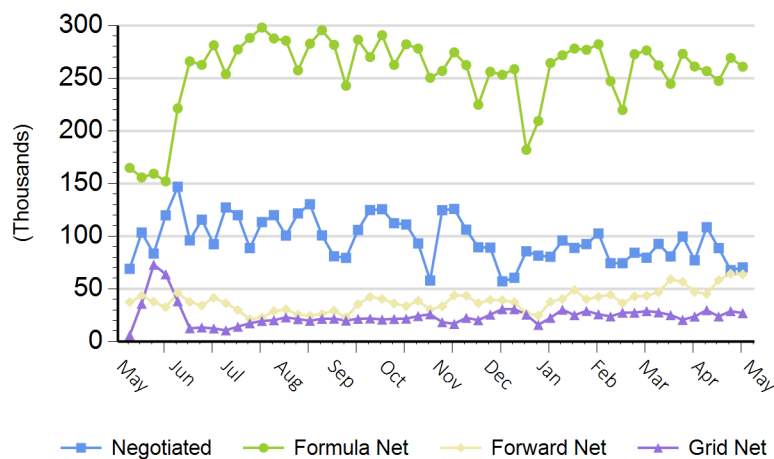
20,262

Mon May 03

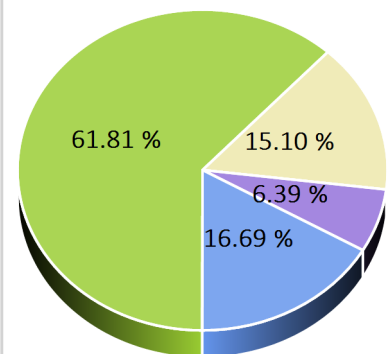
142,421

Purchasing Basis Volume

Weekly Purchasing Basis



Previous Week





National Weekly Fed Cattle Comprehensive

Agricultural Marketing Service
Livestock, Poultry, and Grain Market News

May 04, 2021

Weekly Negotiated Avg. Price by Delivery Period

(Beef Type Cattle: All live transactions converted to dressed price)

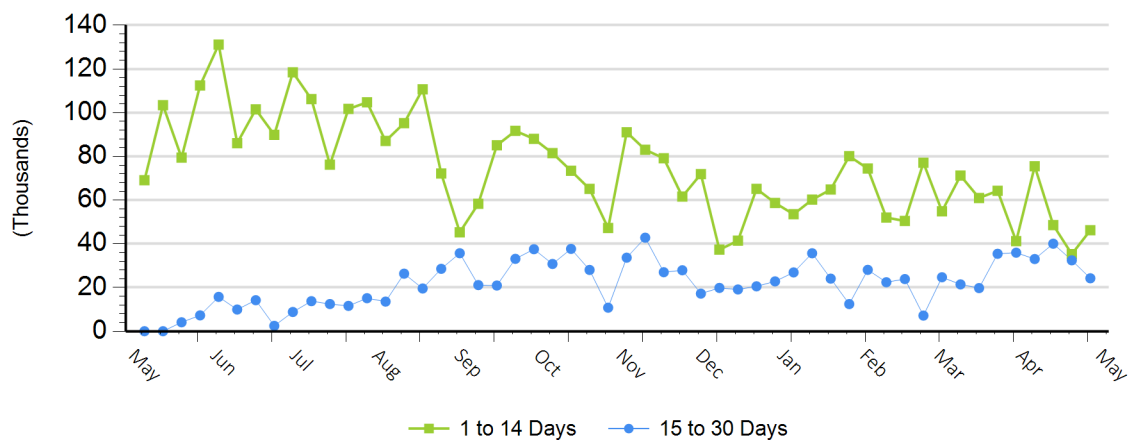
Avg Price (1 to 14 Days)

\$188.82

Avg Price (15 to 30 Days)

\$189.90

Weekly Negotiated Head Count by Delivery Period



For more Information about this report, please visit this link: [National Weekly Fed Cattle Comprehensive Overview](#)