



# National Weekly Fed Cattle Comprehensive

Agricultural Marketing Service

Livestock, Poultry, and Grain Market News

April 13, 2021

## Weighted Average Prices

(Weekly Information from 2pm Previous Monday to 10am Current Monday; Includes Negotiated, Formula Nets, Contract Nets, & Grid Nets)"

### All Steers & Heifers (Beef Type Cattle)

Purchasing Basis	% Choice	Head	Avg Price	Week Ago Change	Year Ago Change
Dressed	> 65% Choice	246,982	\$189.55	\$2.45 ↑	\$3.23 ↑
	< 65% Choice	17,428	\$184.58	\$2.57 ↑	\$4.49 ↑
	Total all Grades	264,410	\$189.22	\$2.54 ↑	\$3.59 ↑
Live	> 65% Choice	132,290	\$121.36	\$2.93 ↑	\$7.50 ↑
	< 65% Choice	12,961	\$118.72	\$1.69 ↑	\$4.48 ↑
	Total all Grades	145,251	\$121.13	\$2.83 ↑	\$7.16 ↑

### Dairy Bred

Purchasing Basis	% Choice	Head	Avg Price	Week Ago Change	Year Ago Change
Dressed	> 65% Choice	21,300	\$178.90	\$1.45 ↑	\$5.68 ↑
	< 65% Choice	1,849	\$167.30	\$0.57 ↑	\$3.68 ↑
	Total all Grades	23,149	\$177.97	\$1.12 ↑	\$5.42 ↑
Live	> 65% Choice	4,033	\$105.95	\$2.01 ↑	\$6.50 ↑
	< 65% Choice	440	\$102.57	(\$2.11) ↓	\$4.07 ↑
	Total all Grades	4,473	\$105.62	\$1.63 ↑	\$6.19 ↑

## Spread Comparison Values

### Beef Type minus Dairy Type

(Weekly Information from 2pm Previous Monday to 10am Current Monday; Includes Negotiated, Formula Nets, Contract Nets, & Grid Nets)

Purchasing Basis	Current	Week Ago Change	Year Ago Change
Dressed	\$11.25 ↑	\$9.83 ↑	\$13.08 ↑
Live	\$15.51 ↑	\$14.31 ↑	\$14.54 ↑

### Formula Net minus Negotiated

(Beef Type Cattle; All live transactions converted to a dressed price)

### 52 Week Rolling Average

\$3.31





# National Weekly Fed Cattle Comprehensive

Agricultural Marketing Service  
Livestock, Poultry, and Grain Market News

April 13, 2021

## Formula Base minus Negotiated

(Beef Type Cattle; All live transactions converted to a dressed price)

52 Week Rolling Average

\$0.11



## Formula Net minus Formula Base

(Beef Type Cattle; All live transactions converted to a dressed price)

52 Week Rolling Average

\$3.20



## Grading % and Carcass Weights

(Beef Type Cattle; Includes Formula Net, Contract Net, and Grid Net; Grading % includes Choice & higher; Carcass Weight includes all grades; All live transactions converted to a dressed basis)

Grading %

84.4

Week Ago

83.8



Dressed Weight

866.4

Week Ago

857.8



## Daily Formula Base Voume

Tue Apr 06

38,506

Wed Apr 07

39,854

Thu Apr 08

26,649

Fri Apr 09

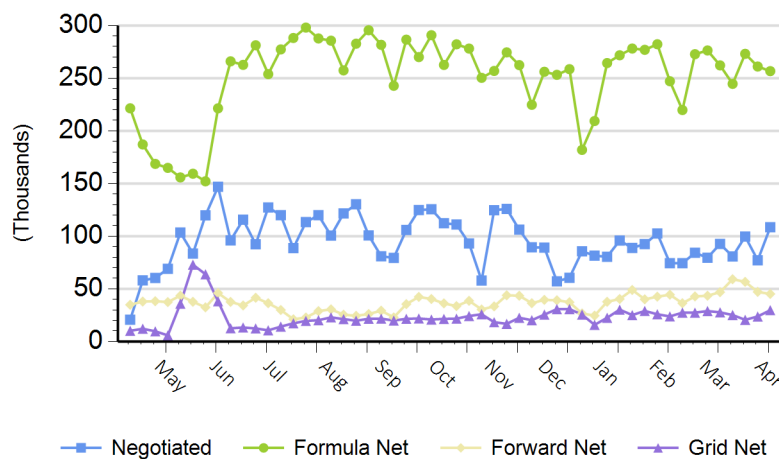
25,668

Mon Apr 12

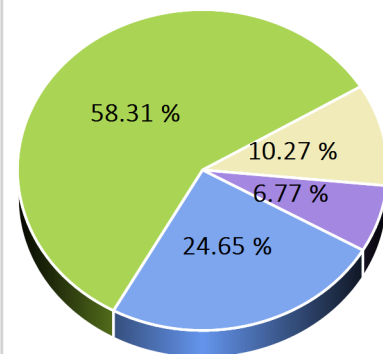
126,887

## Purchasing Basis Volume

### Weekly Purchasing Basis



### Previous Week





# National Weekly Fed Cattle Comprehensive

Agricultural Marketing Service  
Livestock, Poultry, and Grain Market News

April 13, 2021

## Weekly Negotiated Avg. Price by Delivery Period

(Beef Type Cattle: All live transactions converted to dressed price)

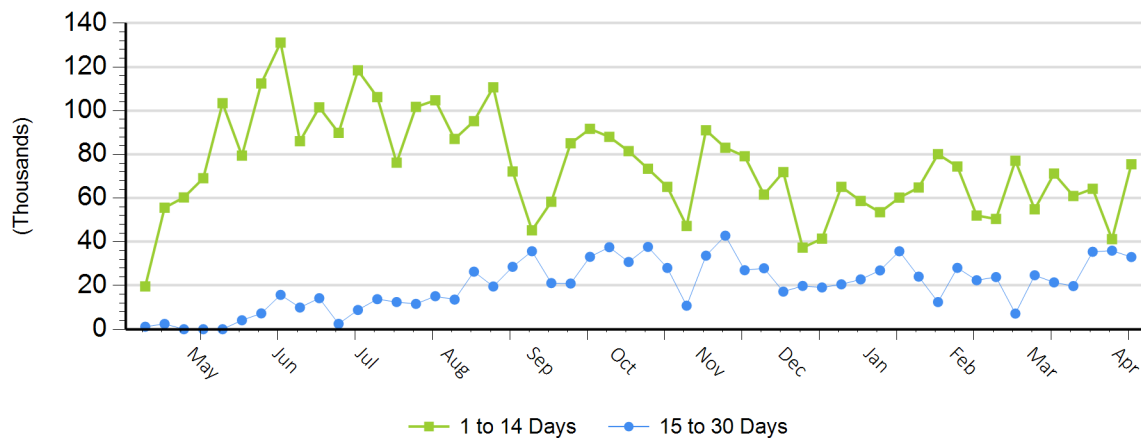
Avg Price (1 to 14 Days)

\$192.99

Avg Price (15 to 30 Days)

\$194.84

## Weekly Negotiated Head Count by Delivery Period



For more Information about this report, please visit this link: [National Weekly Fed Cattle Comprehensive Overview](#)