



# National Weekly Fed Cattle Comprehensive

Agricultural Marketing Service

Livestock, Poultry, and Grain Market News

March 30, 2021

## Weighted Average Prices

(Weekly Information from 2pm Previous Monday to 10am Current Monday; Includes Negotiated, Formula Nets, Contract Nets, & Grid Nets)"

### All Steers & Heifers (Beef Type Cattle)

Purchasing Basis	% Choice	Head	Avg Price	Week Ago Change	Year Ago Change
Dressed	> 65% Choice	232,444	\$185.52	\$0.52 ↑	\$4.48 ↑
	< 65% Choice	20,161	\$180.28	\$0.31 ↑	\$6.09 ↑
	Total all Grades	252,605	\$185.10	\$0.53 ↑	\$4.57 ↑
Live	> 65% Choice	147,214	\$116.62	\$0.42 ↑	(\$1.45) ↓
	< 65% Choice	15,601	\$115.72	\$0.17 ↑	(\$0.73) ↓
	Total all Grades	162,815	\$116.54	\$0.39 ↑	(\$1.33) ↓

### Dairy Bred

Purchasing Basis	% Choice	Head	Avg Price	Week Ago Change	Year Ago Change
Dressed	> 65% Choice	25,076	\$176.36	(\$1.21) ↓	\$8.28 ↑
	< 65% Choice	1,131	\$166.58	(\$0.53) ↓	\$9.50 ↑
	Total all Grades	26,207	\$175.94	(\$0.88) ↓	\$8.72 ↑
Live	> 65% Choice	3,509	\$103.27	\$0.35 ↑	\$5.21 ↑
	< 65% Choice	66	\$96.87	\$96.87 ↑	\$3.32 ↑
	Total all Grades	3,575	\$103.15	\$0.23 ↑	\$5.96 ↑

## Spread Comparison Values

### Beef Type minus Dairy Type

(Weekly Information from 2pm Previous Monday to 10am Current Monday; Includes Negotiated, Formula Nets, Contract Nets, & Grid Nets)

Purchasing Basis	Current	Week Ago Change	Year Ago Change
Dressed	\$9.16 ↑	\$7.75 ↑	\$13.31 ↑
Live	\$13.39 ↑	\$13.23 ↑	\$20.68 ↑

### Formula Net minus Negotiated

(Beef Type Cattle; All live transactions converted to a dressed price)

#### 52 Week Rolling Average

\$4.13





# National Weekly Fed Cattle Comprehensive

Agricultural Marketing Service  
Livestock, Poultry, and Grain Market News

March 30, 2021

## Formula Base minus Negotiated

(Beef Type Cattle; All live transactions converted to a dressed price)

52 Week Rolling Average

\$0.94



## Formula Net minus Formula Base

(Beef Type Cattle; All live transactions converted to a dressed price)

52 Week Rolling Average

\$3.19



## Grading % and Carcass Weights

(Beef Type Cattle; Includes Formula Net, Contract Net, and Grid Net; Grading % includes Choice & higher; Carcass Weight includes all grades; All live transactions converted to a dressed basis)

Grading %

83.6

Week Ago

84.3



Dressed Weight

867.9

Week Ago

871.4



## Daily Formula Base Voume

Tue Mar 23

57,455

Wed Mar 24

34,154

Thu Mar 25

32,982

Fri Mar 26

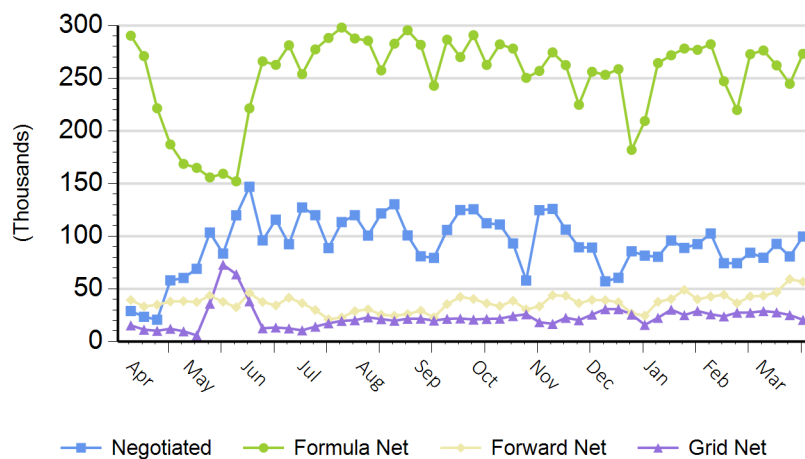
21,103

Mon Mar 29

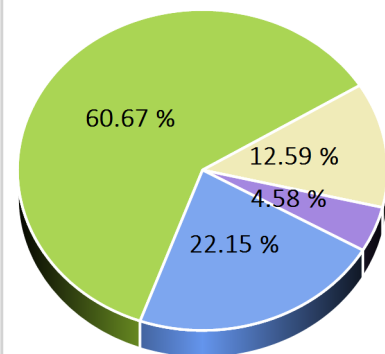
139,567

## Purchasing Basis Volume

### Weekly Purchasing Basis



### Previous Week





# National Weekly Fed Cattle Comprehensive

Agricultural Marketing Service  
Livestock, Poultry, and Grain Market News

March 30, 2021

## Weekly Negotiated Avg. Price by Delivery Period

(Beef Type Cattle: All live transactions converted to dressed price)

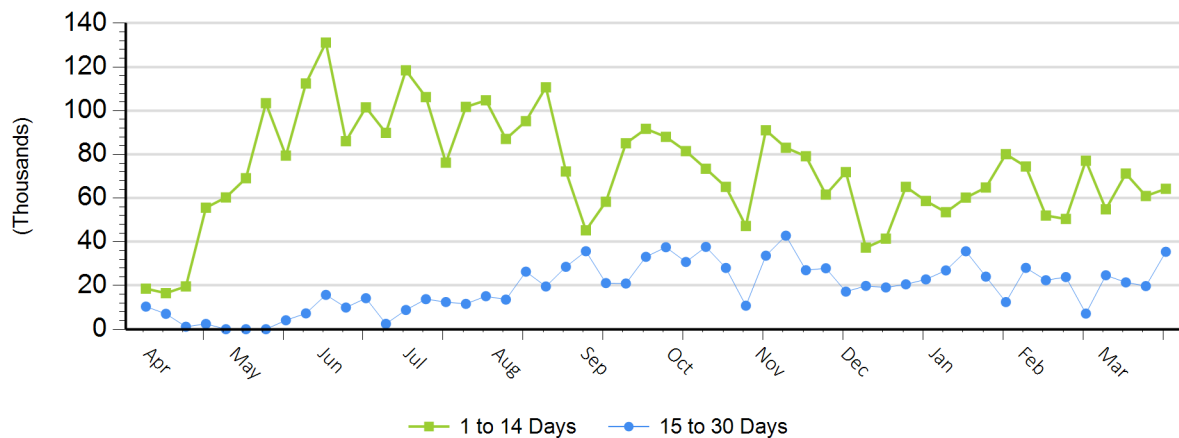
Avg Price (1 to 14 Days)

\$183.15

Avg Price (15 to 30 Days)

\$184.28

## Weekly Negotiated Head Count by Delivery Period



For more Information about this report, please visit this link: [National Weekly Fed Cattle Comprehensive Overview](#)