



# National Weekly Fed Cattle Comprehensive

Agricultural Marketing Service

Livestock, Poultry, and Grain Market News

March 09, 2021

## Weighted Average Prices

(Weekly Information from 2pm Previous Monday to 10am Current Monday; Includes Negotiated, Formula Nets, Contract Nets, & Grid Nets)"

### All Steers & Heifers (Beef Type Cattle)

Purchasing Basis	% Choice	Head	Avg Price	Week Ago Change	Year Ago Change
Dressed	> 65% Choice	233,520	\$184.65	\$0.12 ↑	(\$4.08) ↓
	< 65% Choice	25,228	\$179.89	\$0.99 ↑	(\$5.26) ↓
	Total all Grades	258,748	\$184.18	(\$0.01) ↓	(\$4.22) ↓
Live	> 65% Choice	121,611	\$115.97	\$0.05 ↑	\$0.87 ↑
	< 65% Choice	12,677	\$115.11	(\$0.24) ↓	(\$1.58) ↓
	Total all Grades	134,288	\$115.89	\$0.03 ↑	\$0.65 ↑

### Dairy Bred

Purchasing Basis	% Choice	Head	Avg Price	Week Ago Change	Year Ago Change
Dressed	> 65% Choice	29,066	\$175.05	\$0.88 ↑	(\$0.17) ↓
	< 65% Choice	991	\$164.31	\$4.20 ↑	(\$8.34) ↓
	Total all Grades	30,057	\$174.69	\$1.43 ↑	(\$0.35) ↓
Live	> 65% Choice	2,112	\$102.21	(\$0.44) ↓	(\$2.11) ↓
	< 65% Choice	398	\$99.25	(\$1.63) ↓	(\$5.29) ↓
	Total all Grades	2,510	\$101.74	(\$0.79) ↓	(\$2.66) ↓

## Spread Comparison Values

### Beef Type minus Dairy Type

(Weekly Information from 2pm Previous Monday to 10am Current Monday; Includes Negotiated, Formula Nets, Contract Nets, & Grid Nets)

Purchasing Basis	Current	Week Ago Change	Year Ago Change
Dressed	\$9.49 ↑	\$10.93 ↑	\$13.36 ↑
Live	\$14.15 ↑	\$13.33 ↑	\$10.84 ↑

### Formula Net minus Negotiated

(Beef Type Cattle; All live transactions converted to a dressed price)

#### 52 Week Rolling Average

\$4.02





# National Weekly Fed Cattle Comprehensive

Agricultural Marketing Service  
Livestock, Poultry, and Grain Market News

March 09, 2021

## Formula Base minus Negotiated

(Beef Type Cattle; All live transactions converted to a dressed price)

52 Week Rolling Average

\$0.80



## Formula Net minus Formula Base

(Beef Type Cattle; All live transactions converted to a dressed price)

52 Week Rolling Average

\$3.22



## Grading % and Carcass Weights

(Beef Type Cattle; Includes Formula Net, Contract Net, and Grid Net; Grading % includes Choice & higher; Carcass Weight includes all grades; All live transactions converted to a dressed basis)

Grading %

83.5

Week Ago

85.5



Dressed Weight

868.7

Week Ago

873.6



## Daily Formula Base Voume

Tue Mar 02

49,942

Wed Mar 03

38,011

Thu Mar 04

46,840

Fri Mar 05

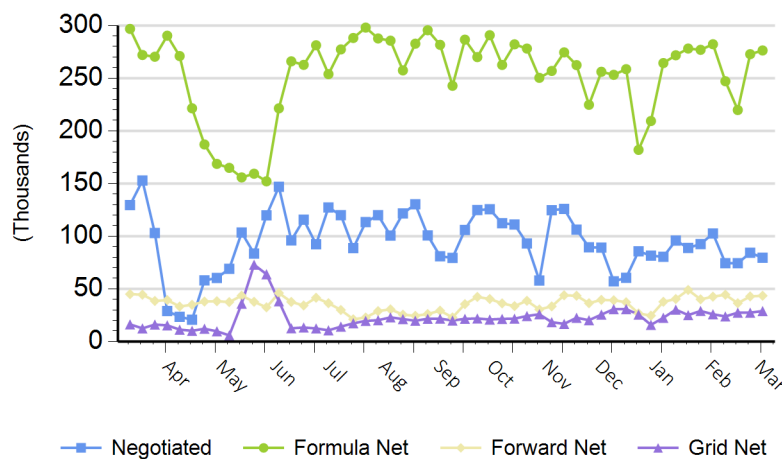
28,441

Mon Mar 08

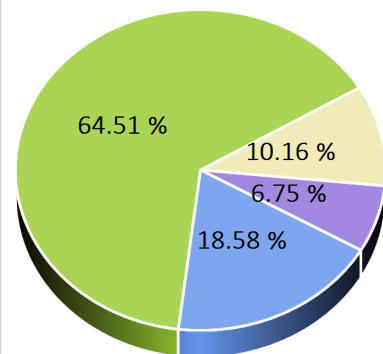
102,064

## Purchasing Basis Volume

### Weekly Purchasing Basis



### Previous Week





# National Weekly Fed Cattle Comprehensive

Agricultural Marketing Service  
Livestock, Poultry, and Grain Market News

March 09, 2021

## Weekly Negotiated Avg. Price by Delivery Period

(Beef Type Cattle: All live transactions converted to dressed price)

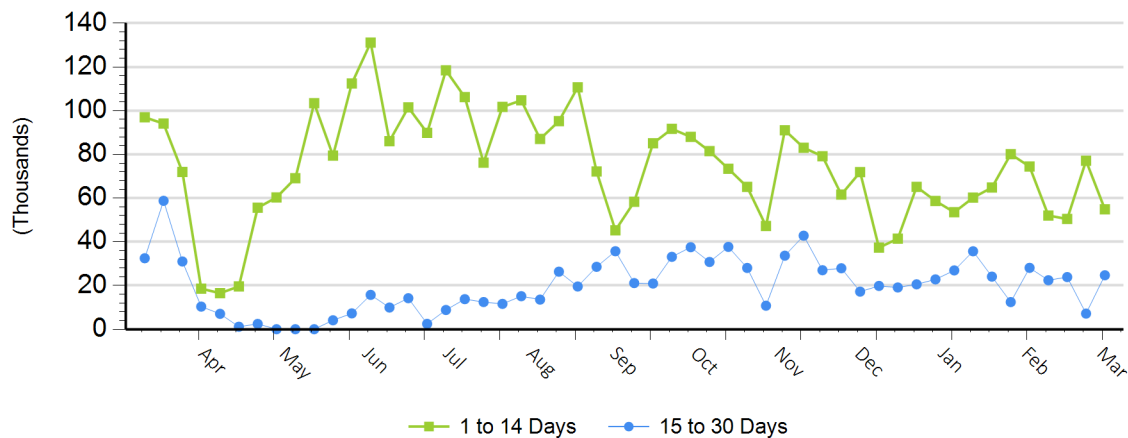
Avg Price (1 to 14 Days)

\$179.75

Avg Price (15 to 30 Days)

\$179.84

## Weekly Negotiated Head Count by Delivery Period



For more Information about this report, please visit this link: [National Weekly Fed Cattle Comprehensive Overview](#)