



National Weekly Fed Cattle Comprehensive

Agricultural Marketing Service

Livestock, Poultry, and Grain Market News

December 15, 2020

Weighted Average Prices

(Weekly Information from 2pm Previous Monday to 10am Current Monday; Includes Negotiated, Formula Nets, Contract Nets, & Grid Nets)"

All Steers & Heifers (Beef Type Cattle)

Purchasing Basis	% Choice	Head	Avg Price	Week Ago Change	Year Ago Change
Dressed	> 65% Choice	217,065	\$177.92	(\$0.07) ↓	(\$13.78) ↓
	< 65% Choice	24,713	\$173.39	(\$0.19) ↓	(\$12.85) ↓
	Total all Grades	241,778	\$177.45	(\$0.19) ↓	(\$13.57) ↓
Live	> 65% Choice	96,546	\$111.67	(\$0.41) ↓	(\$8.26) ↓
	< 65% Choice	12,655	\$110.51	(\$1.30) ↓	(\$8.75) ↓
	Total all Grades	109,201	\$111.53	(\$0.51) ↓	(\$8.32) ↓

Dairy Bred

Purchasing Basis	% Choice	Head	Avg Price	Week Ago Change	Year Ago Change
Dressed	> 65% Choice	22,520	\$169.63	(\$0.18) ↓	(\$6.37) ↓
	< 65% Choice	1,272	\$155.16	(\$0.74) ↓	(\$12.29) ↓
	Total all Grades	23,792	\$168.85	\$0.13 ↑	(\$6.38) ↓
Live	> 65% Choice	2,737	\$98.80	(\$1.25) ↓	(\$4.42) ↓
	< 65% Choice	473	\$94.77	(\$3.96) ↓	(\$12.58) ↓
	Total all Grades	3,210	\$98.21	(\$1.77) ↓	(\$6.10) ↓

Spread Comparison Values

Beef Type minus Dairy Type

(Weekly Information from 2pm Previous Monday to 10am Current Monday; Includes Negotiated, Formula Nets, Contract Nets, & Grid Nets)

Purchasing Basis	Current	Week Ago Change	Year Ago Change
Dressed	\$8.60 ↑	\$8.92 ↑	\$15.79 ↑
Live	\$13.32 ↑	\$12.06 ↑	\$15.54 ↑

Formula Net minus Negotiated

(Beef Type Cattle; All live transactions converted to a dressed price)

52 Week Rolling Average

\$4.75





National Weekly Fed Cattle Comprehensive

Agricultural Marketing Service
Livestock, Poultry, and Grain Market News

December 15, 2020

Formula Base minus Negotiated

(Beef Type Cattle; All live transactions converted to a dressed price)

52 Week Rolling Average

\$1.79



Formula Net minus Formula Base

(Beef Type Cattle; All live transactions converted to a dressed price)

52 Week Rolling Average

\$2.96



Grading % and Carcass Weights

(Beef Type Cattle; Includes Formula Net, Contract Net, and Grid Net; Grading % includes Choice & higher; Carcass Weight includes all grades; All live transactions converted to a dressed basis)

Grading %

81.8

Week Ago

81.9



Dressed Weight

891.4

Week Ago

894.2



Daily Formula Base Volume

Tue Dec 08

58,403

Wed Dec 09

30,422

Thu Dec 10

29,454

Fri Dec 11

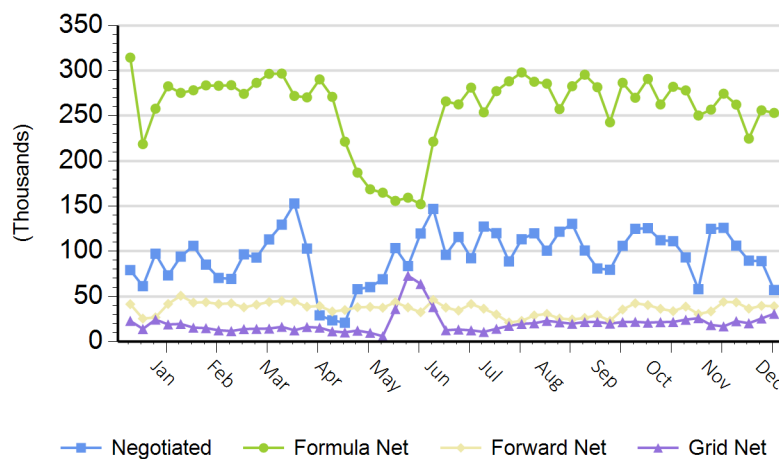
36,700

Mon Dec 14

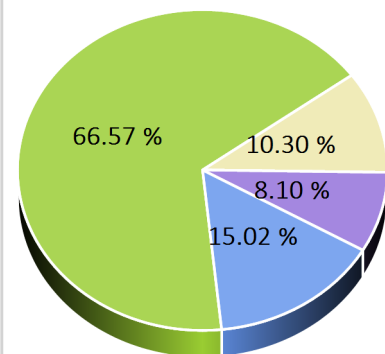
96,399

Purchasing Basis Volume

Weekly Purchasing Basis



Previous Week





National Weekly Fed Cattle Comprehensive

Agricultural Marketing Service
Livestock, Poultry, and Grain Market News

December 15, 2020

Weekly Negotiated Avg. Price by Delivery Period

(Beef Type Cattle: All live transactions converted to dressed price)

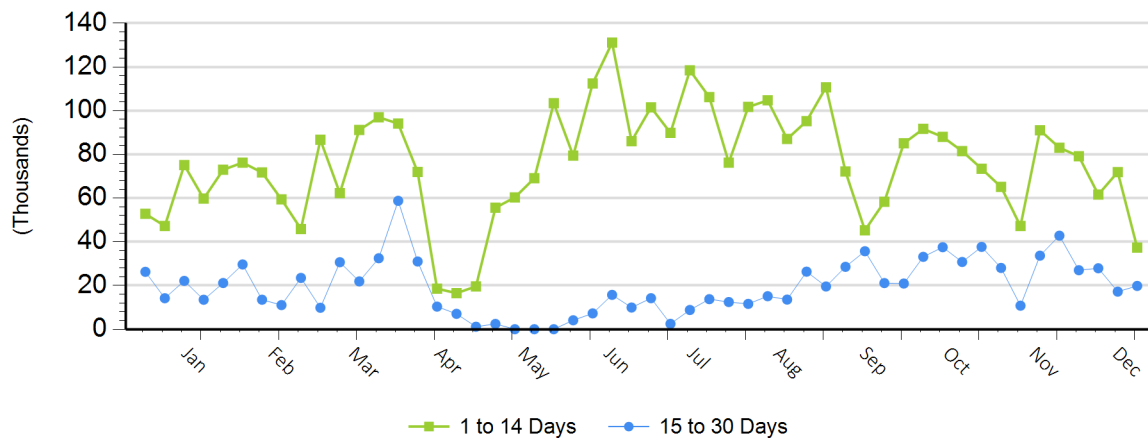
Avg Price (1 to 14 Days)

\$169.33

Avg Price (15 to 30 Days)

\$167.25

Weekly Negotiated Head Count by Delivery Period



For more Information about this report, please visit this link: [National Weekly Fed Cattle Comprehensive Overview](#)