



# National Weekly Fed Cattle Comprehensive

Agricultural Marketing Service

Livestock, Poultry, and Grain Market News

December 08, 2020

## Weighted Average Prices

(Weekly Information from 2pm Previous Monday to 10am Current Monday; Includes Negotiated, Formula Nets, Contract Nets, & Grid Nets)"

### All Steers & Heifers (Beef Type Cattle)

Purchasing Basis	% Choice	Head	Avg Price	Week Ago Change	Year Ago Change
Dressed	> 65% Choice	223,684	\$177.99	\$0.92 ↑	(\$11.67) ↓
	< 65% Choice	19,445	\$173.58	\$0.90 ↑	(\$10.91) ↓
	Total all Grades	243,129	\$177.64	\$0.96 ↑	(\$11.40) ↓
Live	> 65% Choice	116,641	\$112.08	\$0.12 ↑	(\$7.31) ↓
	< 65% Choice	17,965	\$111.81	\$1.28 ↑	(\$6.83) ↓
	Total all Grades	134,606	\$112.04	\$0.26 ↑	(\$7.23) ↓

### Dairy Bred

Purchasing Basis	% Choice	Head	Avg Price	Week Ago Change	Year Ago Change
Dressed	> 65% Choice	26,301	\$169.81	\$0.93 ↑	(\$3.21) ↓
	< 65% Choice	2,227	\$155.90	(\$2.55) ↓	(\$6.03) ↓
	Total all Grades	28,528	\$168.72	\$0.50 ↑	(\$3.10) ↓
Live	> 65% Choice	2,633	\$100.05	\$0.66 ↑	(\$2.74) ↓
	< 65% Choice	143	\$98.73	\$3.43 ↑	(\$6.69) ↓
	Total all Grades	2,776	\$99.98	\$1.11 ↑	(\$4.06) ↓

## Spread Comparison Values

### Beef Type minus Dairy Type

(Weekly Information from 2pm Previous Monday to 10am Current Monday; Includes Negotiated, Formula Nets, Contract Nets, & Grid Nets)

Purchasing Basis	Current	Week Ago Change	Year Ago Change
Dressed	\$8.92 ↑	\$8.46 ↑	\$17.22 ↑
Live	\$12.06 ↑	\$12.91 ↑	\$15.23 ↑

### Formula Net minus Negotiated

(Beef Type Cattle; All live transactions converted to a dressed price)

#### 52 Week Rolling Average

\$4.67





# National Weekly Fed Cattle Comprehensive

Agricultural Marketing Service  
Livestock, Poultry, and Grain Market News

December 08, 2020

## Formula Base minus Negotiated

(Beef Type Cattle; All live transactions converted to a dressed price)

52 Week Rolling Average

\$1.74



## Formula Net minus Formula Base

(Beef Type Cattle; All live transactions converted to a dressed price)

52 Week Rolling Average

\$2.93



## Grading % and Carcass Weights

(Beef Type Cattle; Includes Formula Net, Contract Net, and Grid Net; Grading % includes Choice & higher; Carcass Weight includes all grades; All live transactions converted to a dressed basis)

Grading %

81.9

Week Ago

81.9



Dressed Weight

894.2

Week Ago

896.5



## Daily Formula Base Volume

Tue Dec 01

52,809

Wed Dec 02

35,704

Thu Dec 03

43,889

Fri Dec 04

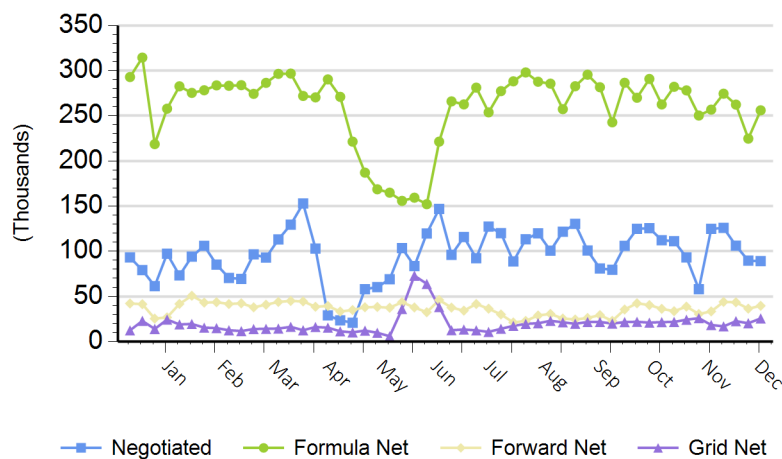
26,532

Mon Dec 07

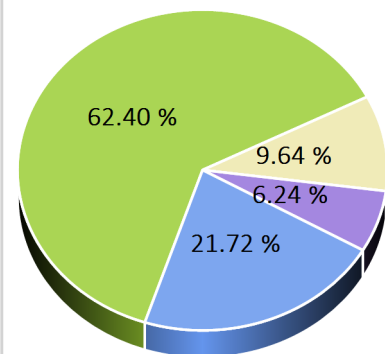
107,102

## Purchasing Basis Volume

### Weekly Purchasing Basis



### Previous Week





# National Weekly Fed Cattle Comprehensive

Agricultural Marketing Service  
Livestock, Poultry, and Grain Market News

December 08, 2020

## Weekly Negotiated Avg. Price by Delivery Period

(Beef Type Cattle: All live transactions converted to dressed price)

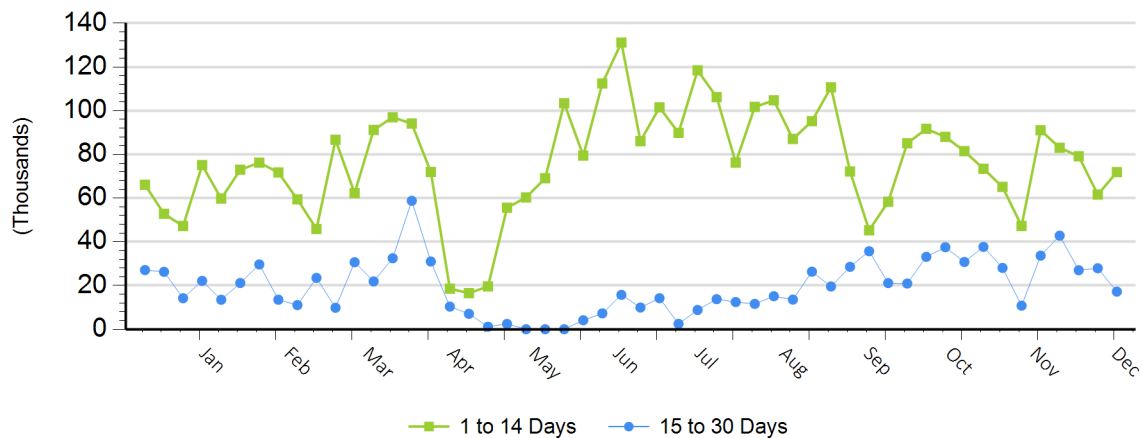
Avg Price (1 to 14 Days)

\$174.07

Avg Price (15 to 30 Days)

\$172.15

## Weekly Negotiated Head Count by Delivery Period



For more Information about this report, please visit this link: [National Weekly Fed Cattle Comprehensive Overview](#)