



# National Weekly Fed Cattle Comprehensive

Agricultural Marketing Service

Livestock, Poultry, and Grain Market News

November 10, 2020

## Weighted Average Prices

(Weekly Information from 2pm Previous Monday to 10am Current Monday; Includes Negotiated, Formula Nets, Contract Nets, & Grid Nets)"

### All Steers & Heifers (Beef Type Cattle)

Purchasing Basis	% Choice	Head	Avg Price	Week Ago Change	Year Ago Change
Dressed	> 65% Choice	213,102	\$170.01	(\$1.46) ↓	(\$11.17) ↓
	< 65% Choice	22,367	\$167.20	(\$0.92) ↓	(\$7.13) ↓
	Total all Grades	235,469	\$169.74	(\$1.39) ↓	(\$10.56) ↓
Live	> 65% Choice	155,867	\$107.55	(\$0.32) ↓	(\$7.88) ↓
	< 65% Choice	14,397	\$106.73	(\$0.37) ↓	(\$6.32) ↓
	Total all Grades	170,264	\$107.48	(\$0.29) ↓	(\$7.61) ↓

### Dairy Bred

Purchasing Basis	% Choice	Head	Avg Price	Week Ago Change	Year Ago Change
Dressed	> 65% Choice	21,015	\$164.98	\$0.05 ↑	(\$3.66) ↓
	< 65% Choice	1,787	\$150.99	\$3.54 ↑	(\$7.59) ↓
	Total all Grades	22,802	\$163.88	\$0.40 ↑	(\$3.24) ↓
Live	> 65% Choice	2,485	\$94.13	\$0.36 ↑	(\$5.02) ↓
	< 65% Choice	551	\$93.01	\$1.75 ↑	(\$2.79) ↓
	Total all Grades	3,036	\$93.93	\$0.96 ↑	(\$4.48) ↓

## Spread Comparison Values

### Beef Type minus Dairy Type

(Weekly Information from 2pm Previous Monday to 10am Current Monday; Includes Negotiated, Formula Nets, Contract Nets, & Grid Nets)

Purchasing Basis	Current	Week Ago Change	Year Ago Change
Dressed	\$5.86 ↑	\$7.65 ↑	\$13.18 ↑
Live	\$13.55 ↑	\$14.80 ↑	\$16.68 ↑

### Formula Net minus Negotiated

(Beef Type Cattle; All live transactions converted to a dressed price)

#### 52 Week Rolling Average

\$4.67





# National Weekly Fed Cattle Comprehensive

Agricultural Marketing Service  
Livestock, Poultry, and Grain Market News

November 10, 2020

## Formula Base minus Negotiated

(Beef Type Cattle; All live transactions converted to a dressed price)

52 Week Rolling Average

\$1.77



## Formula Net minus Formula Base

(Beef Type Cattle; All live transactions converted to a dressed price)

52 Week Rolling Average

\$2.90



## Grading % and Carcass Weights

(Beef Type Cattle; Includes Formula Net, Contract Net, and Grid Net; Grading % includes Choice & higher; Carcass Weight includes all grades; All live transactions converted to a dressed basis)

Grading %

81.6

Week Ago

81.5



Dressed Weight

891.2

Week Ago

900.9



## Daily Formula Base Volume

Tue Nov 03

36,191

Wed Nov 04

36,010

Thu Nov 05

40,230

Fri Nov 06

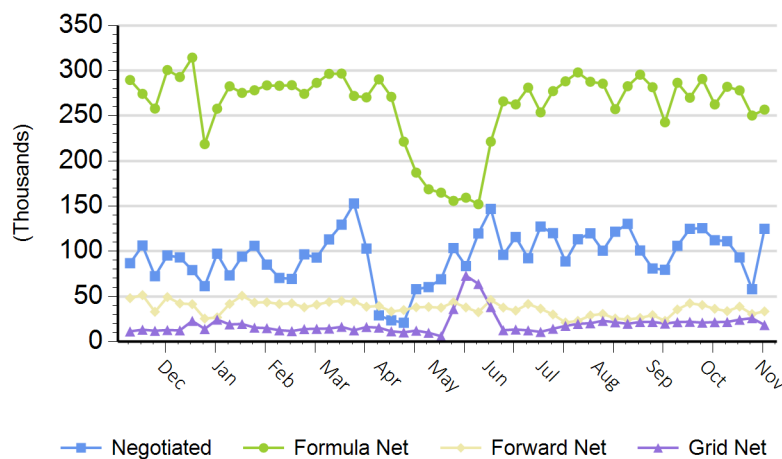
26,497

Mon Nov 09

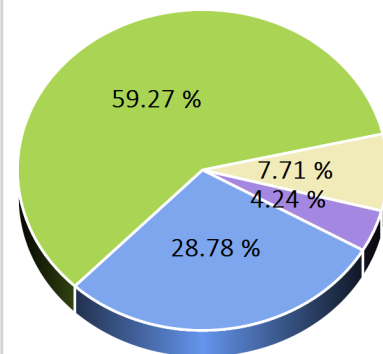
127,570

## Purchasing Basis Volume

### Weekly Purchasing Basis



### Previous Week





# National Weekly Fed Cattle Comprehensive

Agricultural Marketing Service  
Livestock, Poultry, and Grain Market News

November 10, 2020

## Weekly Negotiated Avg. Price by Delivery Period

(Beef Type Cattle: All live transactions converted to dressed price)

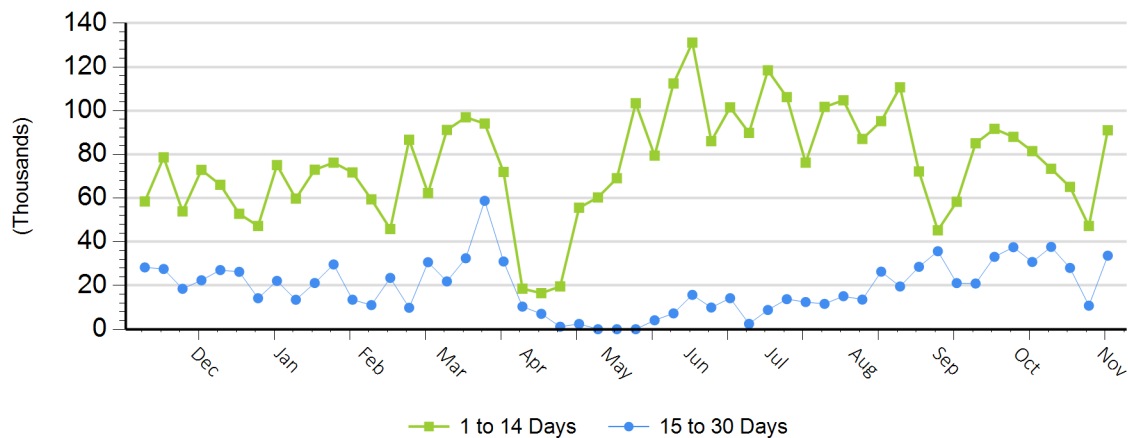
Avg Price (1 to 14 Days)

\$168.37

Avg Price (15 to 30 Days)

\$166.04

## Weekly Negotiated Head Count by Delivery Period



For more Information about this report, please visit this link: [National Weekly Fed Cattle Comprehensive Overview](#)