



# National Weekly Fed Cattle Comprehensive

Agricultural Marketing Service

Livestock, Poultry, and Grain Market News

October 06, 2020

## Weighted Average Prices

(Weekly Information from 2pm Previous Monday to 10am Current Monday; Includes Negotiated, Formula Nets, Contract Nets, & Grid Nets)"

### All Steers & Heifers (Beef Type Cattle)

Purchasing Basis	% Choice	Head	Avg Price	Week Ago Change	Year Ago Change
Dressed	> 65% Choice	237,370	\$168.22	\$2.23 ↑	(\$0.31) ↓
	< 65% Choice	23,704	\$164.48	\$2.30 ↑	\$4.29 ↑
	Total all Grades	261,074	\$167.88	\$2.22 ↑	\$0.83 ↑
Live	> 65% Choice	165,539	\$107.22	\$1.47 ↑	(\$0.81) ↓
	< 65% Choice	20,902	\$105.65	\$1.38 ↑	\$0.18 ↑
	Total all Grades	186,441	\$107.04	\$1.51 ↑	(\$0.54) ↓

### Dairy Bred

Purchasing Basis	% Choice	Head	Avg Price	Week Ago Change	Year Ago Change
Dressed	> 65% Choice	22,067	\$161.27	\$1.62 ↑	\$1.79 ↑
	< 65% Choice	1,982	\$147.94	\$1.25 ↑	\$1.89 ↑
	Total all Grades	24,049	\$160.17	\$1.60 ↑	\$2.11 ↑
Live	> 65% Choice	2,831	\$93.29	\$0.44 ↑	\$4.36 ↑
	< 65% Choice	712	\$92.67	\$1.83 ↑	\$3.22 ↑
	Total all Grades	3,543	\$93.17	\$0.88 ↑	\$4.16 ↑

## Spread Comparison Values

### Beef Type minus Dairy Type

(Weekly Information from 2pm Previous Monday to 10am Current Monday; Includes Negotiated, Formula Nets, Contract Nets, & Grid Nets)

Purchasing Basis	Current	Week Ago Change	Year Ago Change
Dressed	\$7.71 ↑	\$7.09 ↑	\$8.99 ↑
Live	\$13.87 ↑	\$13.24 ↑	\$18.57 ↑

### Formula Net minus Negotiated

(Beef Type Cattle; All live transactions converted to a dressed price)

#### 52 Week Rolling Average

\$4.11





# National Weekly Fed Cattle Comprehensive

Agricultural Marketing Service  
Livestock, Poultry, and Grain Market News

October 06, 2020

## Formula Base minus Negotiated

(Beef Type Cattle; All live transactions converted to a dressed price)

52 Week Rolling Average

\$1.22



## Formula Net minus Formula Base

(Beef Type Cattle; All live transactions converted to a dressed price)

52 Week Rolling Average

\$2.89



## Grading % and Carcass Weights

(Beef Type Cattle; Includes Formula Net, Contract Net, and Grid Net; Grading % includes Choice & higher; Carcass Weight includes all grades; All live transactions converted to a dressed basis)

Grading %

81.2

Week Ago

81.3



Dressed Weight

897.5

Week Ago

893.2



## Daily Formula Base Volume

Tue Sep 29

40,500

Wed Sep 30

32,796

Thu Oct 01

53,262

Fri Oct 02

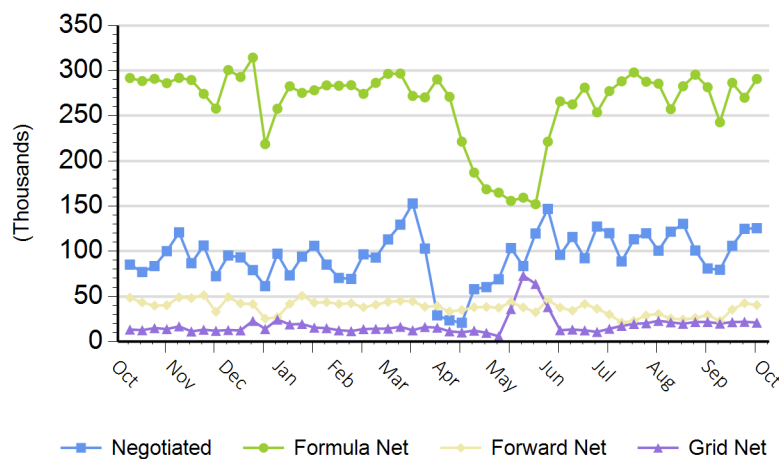
21,952

Mon Oct 05

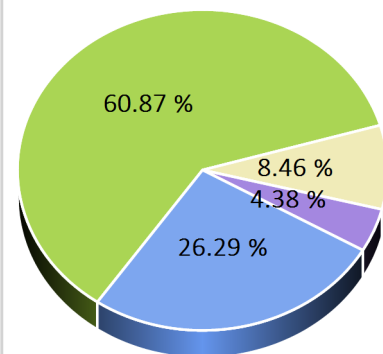
112,520

## Purchasing Basis Volume

### Weekly Purchasing Basis



### Previous Week





# National Weekly Fed Cattle Comprehensive

Agricultural Marketing Service  
Livestock, Poultry, and Grain Market News

October 06, 2020

## Weekly Negotiated Avg. Price by Delivery Period

(Beef Type Cattle: All live transactions converted to dressed price)

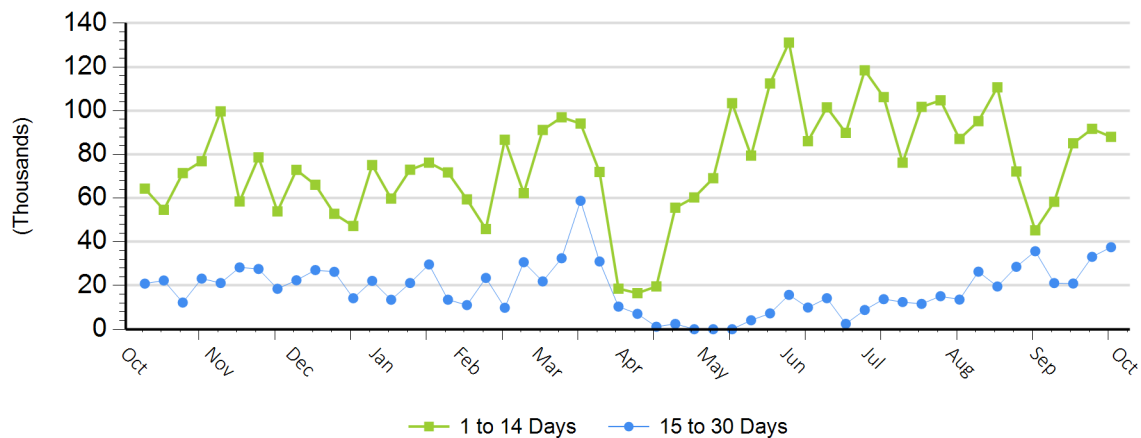
Avg Price (1 to 14 Days)

\$169.10

Avg Price (15 to 30 Days)

\$168.13

## Weekly Negotiated Head Count by Delivery Period



For more Information about this report, please visit this link: [National Weekly Fed Cattle Comprehensive Overview](#)