



National Weekly Fed Cattle Comprehensive

Agricultural Marketing Service

Livestock, Poultry, and Grain Market News

June 23, 2020

Weighted Average Prices

(Weekly Information from 2pm Previous Monday to 10am Current Monday; Includes Negotiated, Formula Nets, Contract Nets, & Grid Nets)"

All Steers & Heifers (Beef Type Cattle)

Purchasing Basis	% Choice	Head	Avg Price	Week Ago Change	Year Ago Change
Dressed	> 65% Choice	284,801	\$174.74	(\$8.62) ↓	(\$9.15) ↓
	< 65% Choice	21,067	\$171.96	(\$7.45) ↓	(\$7.12) ↓
	Total all Grades	305,868	\$174.55	(\$8.50) ↓	(\$8.56) ↓
Live	> 65% Choice	78,234	\$104.81	(\$4.55) ↓	(\$7.88) ↓
	< 65% Choice	6,554	\$104.78	(\$2.63) ↓	(\$7.83) ↓
	Total all Grades	84,788	\$104.81	(\$4.32) ↓	(\$7.87) ↓

Dairy Bred

Purchasing Basis	% Choice	Head	Avg Price	Week Ago Change	Year Ago Change
Dressed	> 65% Choice	26,181	\$164.60	(\$4.64) ↓	(\$5.95) ↓
	< 65% Choice	2,726	\$149.12	(\$4.84) ↓	(\$10.12) ↓
	Total all Grades	28,907	\$163.14	(\$5.15) ↓	(\$6.16) ↓
Live	> 65% Choice	3,271	\$96.93	(\$4.12) ↓	(\$0.45) ↓
	< 65% Choice	615	\$83.90	(\$18.03) ↓	(\$16.40) ↓
	Total all Grades	3,886	\$94.87	(\$6.24) ↓	(\$3.23) ↓

Spread Comparison Values

Beef Type minus Dairy Type

(Weekly Information from 2pm Previous Monday to 10am Current Monday; Includes Negotiated, Formula Nets, Contract Nets, & Grid Nets)

Purchasing Basis	Current	Week Ago Change	Year Ago Change
Dressed	\$11.41 ↑	\$14.76 ↑	\$13.81 ↑
Live	\$9.94 ↑	\$8.02 ↑	\$14.58 ↑

Formula Net minus Negotiated

(Beef Type Cattle; All live transactions converted to a dressed price)

52 Week Rolling Average

\$3.27





National Weekly Fed Cattle Comprehensive

Agricultural Marketing Service
Livestock, Poultry, and Grain Market News

June 23, 2020

Formula Base minus Negotiated

(Beef Type Cattle; All live transactions converted to a dressed price)

52 Week Rolling Average

\$0.13



Formula Net minus Formula Base

(Beef Type Cattle; All live transactions converted to a dressed price)

52 Week Rolling Average

\$3.14



Grading % and Carcass Weights

(Beef Type Cattle; Includes Formula Net, Contract Net, and Grid Net; Grading % includes Choice & higher; Carcass Weight includes all grades; All live transactions converted to a dressed basis)

Grading %

83.5

Week Ago

82.9



Dressed Weight

872.8

Week Ago

877.4



Daily Formula Base Volume

Tue Jun 16

38,727

Wed Jun 17

23,346

Thu Jun 18

48,808

Fri Jun 19

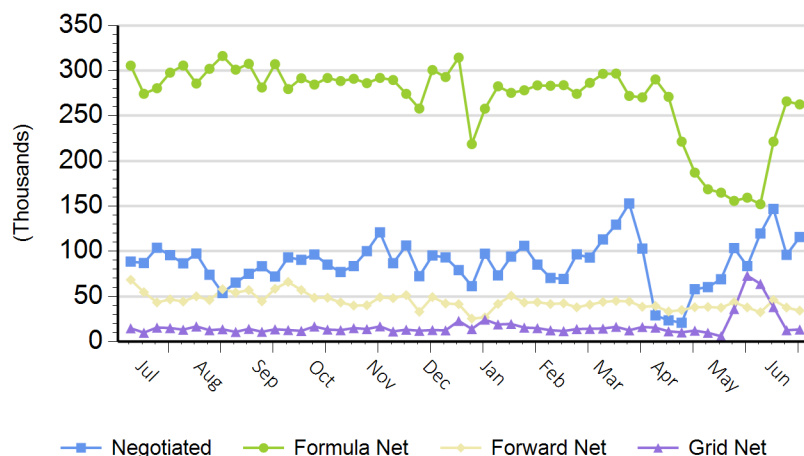
25,390

Mon Jun 22

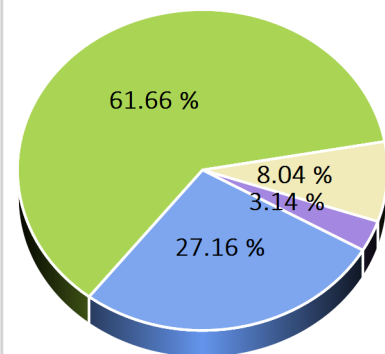
136,241

Purchasing Basis Volume

Weekly Purchasing Basis



Previous Week





National Weekly Fed Cattle Comprehensive

Agricultural Marketing Service
Livestock, Poultry, and Grain Market News

June 23, 2020

Weekly Negotiated Avg. Price by Delivery Period

(Beef Type Cattle: All live transactions converted to dressed price)

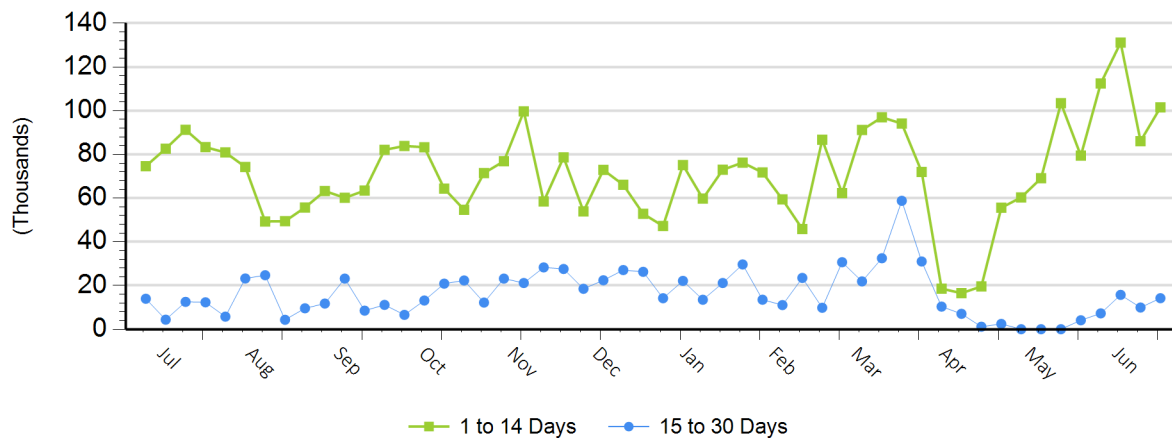
Avg Price (1 to 14 Days)

N/A

Avg Price (15 to 30 Days)

N/A

Weekly Negotiated Head Count by Delivery Period



For more Information about this report, please visit this link: [National Weekly Fed Cattle Comprehensive Overview](#)