



# National Weekly Fed Cattle Comprehensive

Agricultural Marketing Service

Livestock, Poultry, and Grain Market News

June 16, 2020

## Weighted Average Prices

(Weekly Information from 2pm Previous Monday to 10am Current Monday; Includes Negotiated, Formula Nets, Contract Nets, & Grid Nets)"

### All Steers & Heifers (Beef Type Cattle)

| Purchasing Basis | % Choice         | Head    | Avg Price | Week Ago Change | Year Ago Change |
|------------------|------------------|---------|-----------|-----------------|-----------------|
| Dressed          | > 65% Choice     | 275,617 | \$183.36  | (\$4.31) ↓      | (\$3.10) ↓      |
|                  | < 65% Choice     | 23,430  | \$179.41  | (\$6.08) ↓      | (\$1.63) ↓      |
|                  | Total all Grades | 299,047 | \$183.05  | (\$4.43) ↓      | (\$2.63) ↓      |
| Live             | > 65% Choice     | 65,566  | \$109.36  | (\$7.24) ↓      | (\$6.24) ↓      |
|                  | < 65% Choice     | 8,734   | \$107.41  | (\$9.26) ↓      | (\$6.57) ↓      |
|                  | Total all Grades | 74,300  | \$109.13  | (\$7.47) ↓      | (\$6.23) ↓      |

### Dairy Bred

| Purchasing Basis | % Choice         | Head   | Avg Price | Week Ago Change | Year Ago Change |
|------------------|------------------|--------|-----------|-----------------|-----------------|
| Dressed          | > 65% Choice     | 30,892 | \$169.24  | (\$2.96) ↓      | (\$0.69) ↓      |
|                  | < 65% Choice     | 2,049  | \$153.96  | (\$7.80) ↓      | (\$9.06) ↓      |
|                  | Total all Grades | 32,941 | \$168.29  | (\$3.32) ↓      | (\$1.00) ↓      |
| Live             | > 65% Choice     | 3,653  | \$101.05  | (\$3.37) ↓      | \$2.12 ↑        |
|                  | < 65% Choice     | 277    | \$101.93  | \$101.93 ↑      | \$0.38 ↑        |
|                  | Total all Grades | 3,930  | \$101.11  | (\$3.31) ↓      | \$1.38 ↑        |

## Spread Comparison Values

### Beef Type minus Dairy Type

(Weekly Information from 2pm Previous Monday to 10am Current Monday; Includes Negotiated, Formula Nets, Contract Nets, & Grid Nets)

| Purchasing Basis | Current   | Week Ago Change | Year Ago Change |
|------------------|-----------|-----------------|-----------------|
| Dressed          | \$14.76 ↑ | \$15.87 ↑       | \$16.39 ↑       |
| Live             | \$8.02 ↑  | \$12.18 ↑       | \$15.63 ↑       |

### Formula Net minus Negotiated

(Beef Type Cattle; All live transactions converted to a dressed price)

### 52 Week Rolling Average

\$2.93





# National Weekly Fed Cattle Comprehensive

Agricultural Marketing Service  
Livestock, Poultry, and Grain Market News

June 16, 2020

## Formula Base minus Negotiated

(Beef Type Cattle; All live transactions converted to a dressed price)

52 Week Rolling Average

(\$0.16)



## Formula Net minus Formula Base

(Beef Type Cattle; All live transactions converted to a dressed price)

52 Week Rolling Average

\$3.09



## Grading % and Carcass Weights

(Beef Type Cattle; Includes Formula Net, Contract Net, and Grid Net; Grading % includes Choice & higher; Carcass Weight includes all grades; All live transactions converted to a dressed basis)

Grading %

82.9

Week Ago

83.0



Dressed Weight

877.4

Week Ago

869.6



## Daily Formula Base Volume

Tue Jun 09

46,699

Wed Jun 10

35,429

Thu Jun 11

51,156

Fri Jun 12

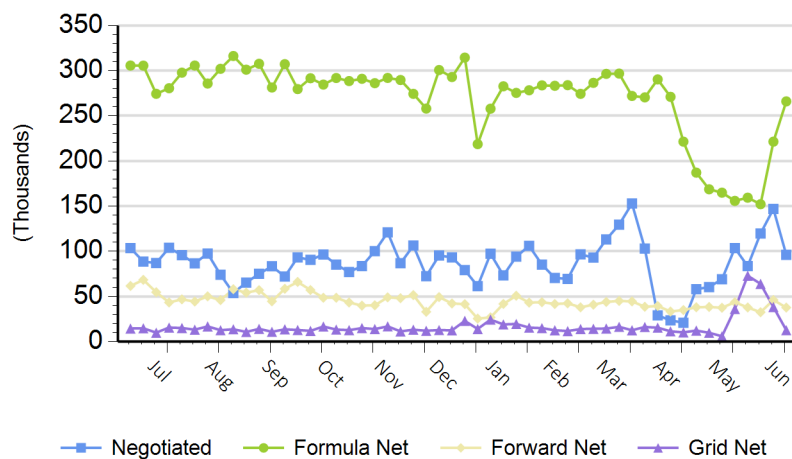
24,144

Mon Jun 15

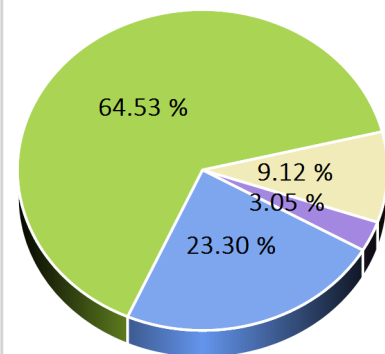
128,447

## Purchasing Basis Volume

### Weekly Purchasing Basis



### Previous Week





# National Weekly Fed Cattle Comprehensive

Agricultural Marketing Service  
Livestock, Poultry, and Grain Market News

June 16, 2020

## Weekly Negotiated Avg. Price by Delivery Period

(Beef Type Cattle: All live transactions converted to dressed price)

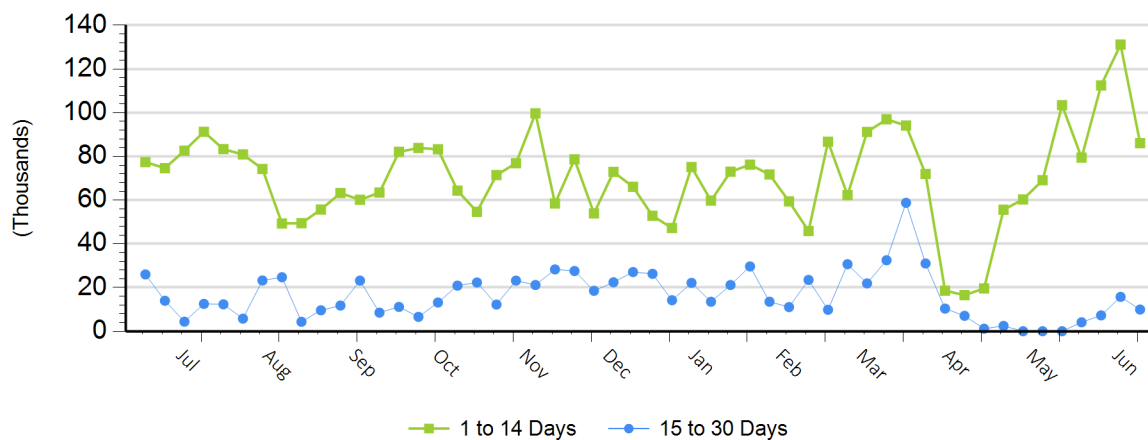
Avg Price (1 to 14 Days)

N/A

Avg Price (15 to 30 Days)

N/A

## Weekly Negotiated Head Count by Delivery Period



For more Information about this report, please visit this link: [National Weekly Fed Cattle Comprehensive Overview](#)