



National Weekly Fed Cattle Comprehensive

Agricultural Marketing Service

Livestock, Poultry, and Grain Market News

May 05, 2020

Weighted Average Prices

(Weekly Information from 2pm Previous Monday to 10am Current Monday; Includes Negotiated, Formula Nets, Contract Nets, & Grid Nets)"

All Steers & Heifers (Beef Type Cattle)

Purchasing Basis	% Choice	Head	Avg Price	Week Ago Change	Year Ago Change
Dressed	> 65% Choice	169,244	\$166.15	(\$3.73) ↓	(\$37.34) ↓
	< 65% Choice	16,477	\$158.74	(\$6.88) ↓	(\$39.97) ↓
	Total all Grades	185,721	\$165.50	(\$4.02) ↓	(\$37.26) ↓
Live	> 65% Choice	54,591	\$103.71	(\$1.18) ↓	(\$21.39) ↓
	< 65% Choice	7,076	\$101.58	(\$4.46) ↓	(\$24.32) ↓
	Total all Grades	61,667	\$103.47	(\$1.58) ↓	(\$21.74) ↓

Dairy Bred

Purchasing Basis	% Choice	Head	Avg Price	Week Ago Change	Year Ago Change
Dressed	> 65% Choice	20,693	\$164.88	\$3.50 ↑	(\$18.49) ↓
	< 65% Choice	3,140	\$154.45	(\$5.71) ↓	(\$23.09) ↓
	Total all Grades	23,833	\$163.51	\$2.22 ↑	(\$18.85) ↓
Live	> 65% Choice	2,089	\$98.59	\$4.94 ↑	(\$12.71) ↓
	< 65% Choice	2,839	\$93.81	\$1.72 ↑	(\$18.47) ↓
	Total all Grades	4,928	\$95.84	\$2.88 ↑	(\$15.53) ↓

Spread Comparison Values

Beef Type minus Dairy Type

(Weekly Information from 2pm Previous Monday to 10am Current Monday; Includes Negotiated, Formula Nets, Contract Nets, & Grid Nets)

Purchasing Basis	Current	Week Ago Change	Year Ago Change
Dressed	\$1.99 ↑	\$8.23 ↑	\$20.40 ↑
Live	\$7.63 ↑	\$12.09 ↑	\$13.84 ↑

Formula Net minus Negotiated

(Beef Type Cattle; All live transactions converted to a dressed price)

52 Week Rolling Average

\$2.92





National Weekly Fed Cattle Comprehensive

Agricultural Marketing Service
Livestock, Poultry, and Grain Market News

May 05, 2020

Formula Base minus Negotiated

(Beef Type Cattle; All live transactions converted to a dressed price)

52 Week Rolling Average

(\$0.22)



Formula Net minus Formula Base

(Beef Type Cattle; All live transactions converted to a dressed price)

52 Week Rolling Average

\$3.14



Grading % and Carcass Weights

(Beef Type Cattle; Includes Formula Net, Contract Net, and Grid Net; Grading % includes Choice & higher; Carcass Weight includes all grades; All live transactions converted to a dressed basis)

Grading %

82.9

Week Ago

82.4



Dressed Weight

865.4

Week Ago

861.5



Daily Formula Base Voume

Tue Apr 28

15,798

Wed Apr 29

23,009

Thu Apr 30

26,458

Fri May 01

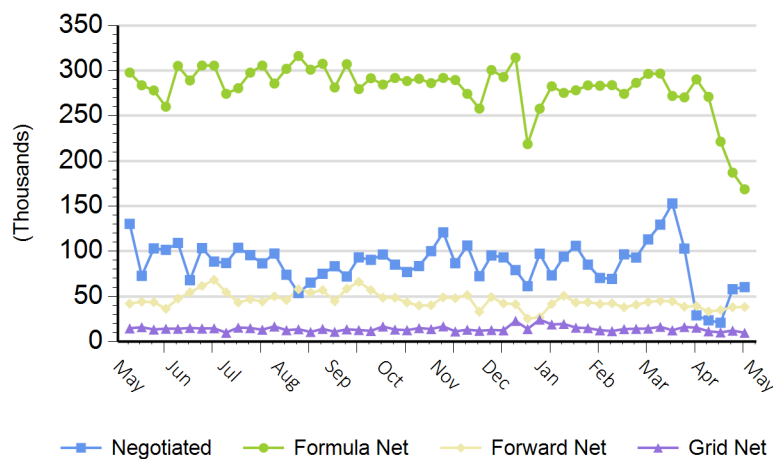
14,914

Mon May 04

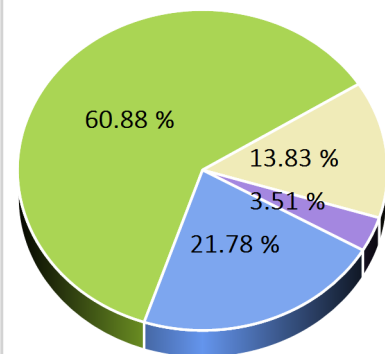
71,982

Purchasing Basis Volume

Weekly Purchasing Basis



Previous Week





National Weekly Fed Cattle Comprehensive

Agricultural Marketing Service
Livestock, Poultry, and Grain Market News

May 05, 2020

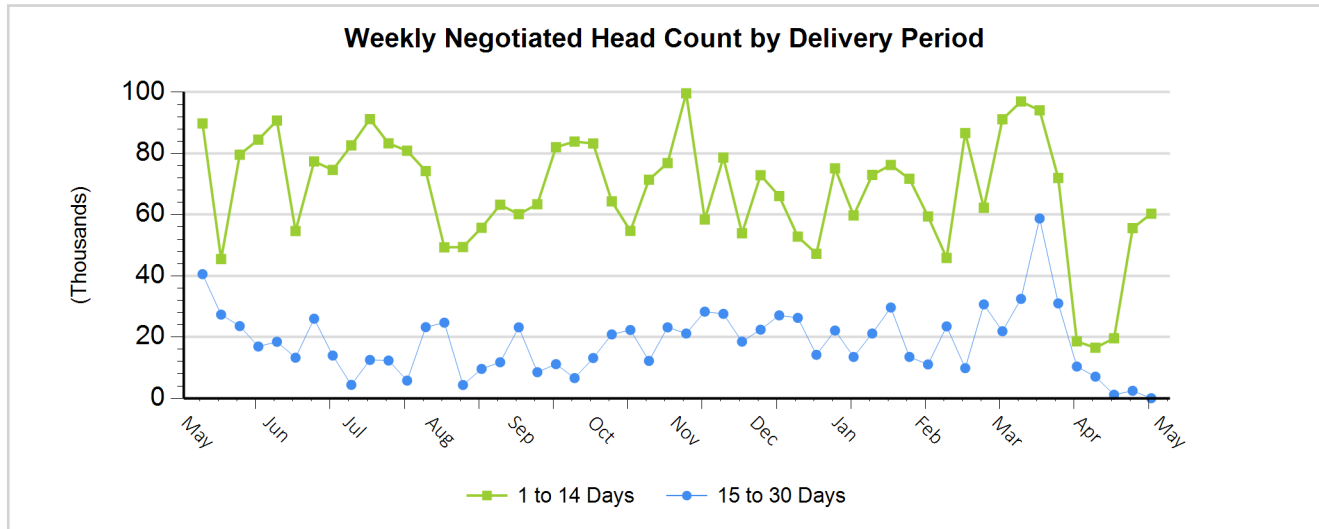
Weekly Negotiated Avg. Price by Delivery Period

(Beef Type Cattle: All live transactions converted to dressed price)

Avg Price (1 to 14 Days)

\$154.28

Avg Price (15 to 30 Days)



For more Information about this report, please visit this link: [National Weekly Fed Cattle Comprehensive Overview](#)