



National Weekly Fed Cattle Comprehensive

Agricultural Marketing Service

Livestock, Poultry, and Grain Market News

April 28, 2020

Weighted Average Prices

(Weekly Information from 2pm Previous Monday to 10am Current Monday; Includes Negotiated, Formula Nets, Contract Nets, & Grid Nets)"

All Steers & Heifers (Beef Type Cattle)

Purchasing Basis	% Choice	Head	Avg Price	Week Ago Change	Year Ago Change
Dressed	> 65% Choice	196,896	\$169.88	(\$6.88) ↓	(\$34.15) ↓
	< 65% Choice	18,136	\$165.62	(\$3.87) ↓	(\$32.96) ↓
	Total all Grades	215,032	\$169.52	(\$6.55) ↓	(\$33.66) ↓
Live	> 65% Choice	44,959	\$104.89	(\$7.49) ↓	(\$22.42) ↓
	< 65% Choice	7,130	\$106.04	(\$5.06) ↓	(\$20.59) ↓
	Total all Grades	52,089	\$105.05	(\$6.98) ↓	(\$22.17) ↓

Dairy Bred

Purchasing Basis	% Choice	Head	Avg Price	Week Ago Change	Year Ago Change
Dressed	> 65% Choice	21,709	\$161.38	(\$6.52) ↓	(\$19.73) ↓
	< 65% Choice	1,672	\$160.16	\$1.28 ↑	(\$17.23) ↓
	Total all Grades	23,381	\$161.29	(\$5.96) ↓	(\$19.21) ↓
Live	> 65% Choice	1,926	\$93.65	(\$3.06) ↓	(\$19.50) ↓
	< 65% Choice	1,533	\$92.09	(\$11.95) ↓	(\$21.91) ↓
	Total all Grades	3,459	\$92.96	(\$4.42) ↓	(\$20.36) ↓

Spread Comparison Values

Beef Type minus Dairy Type

(Weekly Information from 2pm Previous Monday to 10am Current Monday; Includes Negotiated, Formula Nets, Contract Nets, & Grid Nets)

Purchasing Basis	Current	Week Ago Change	Year Ago Change
Dressed	\$8.23 ↑	\$8.82 ↑	\$22.68 ↑
Live	\$12.09 ↑	\$14.65 ↑	\$13.90 ↑

Formula Net minus Negotiated

(Beef Type Cattle; All live transactions converted to a dressed price)

52 Week Rolling Average

\$2.62





National Weekly Fed Cattle Comprehensive

Agricultural Marketing Service
Livestock, Poultry, and Grain Market News

April 28, 2020

Formula Base minus Negotiated

(Beef Type Cattle; All live transactions converted to a dressed price)

52 Week Rolling Average

(\$0.51)



Formula Net minus Formula Base

(Beef Type Cattle; All live transactions converted to a dressed price)

52 Week Rolling Average

\$3.13



Grading % and Carcass Weights

(Beef Type Cattle; Includes Formula Net, Contract Net, and Grid Net; Grading % includes Choice & higher; Carcass Weight includes all grades; All live transactions converted to a dressed basis)

Grading %

82.4

Week Ago

81.9



Dressed Weight

861.5

Week Ago

861.3



Daily Formula Base Volume

Tue Apr 21

57,747

Wed Apr 22

37,130

Thu Apr 23

29,372

Fri Apr 24

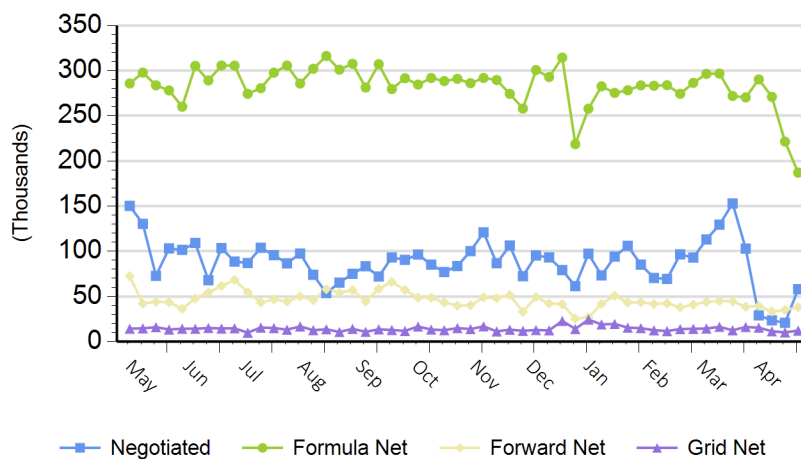
18,963

Mon Apr 27

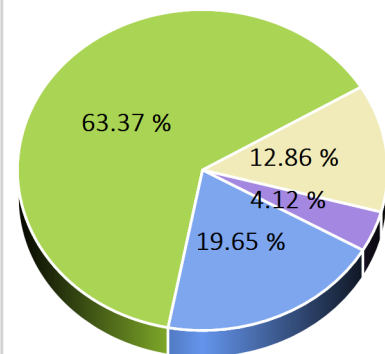
58,660

Purchasing Basis Volume

Weekly Purchasing Basis



Previous Week





National Weekly Fed Cattle Comprehensive

Agricultural Marketing Service
Livestock, Poultry, and Grain Market News

April 28, 2020

Weekly Negotiated Avg. Price by Delivery Period

(Beef Type Cattle: All live transactions converted to dressed price)

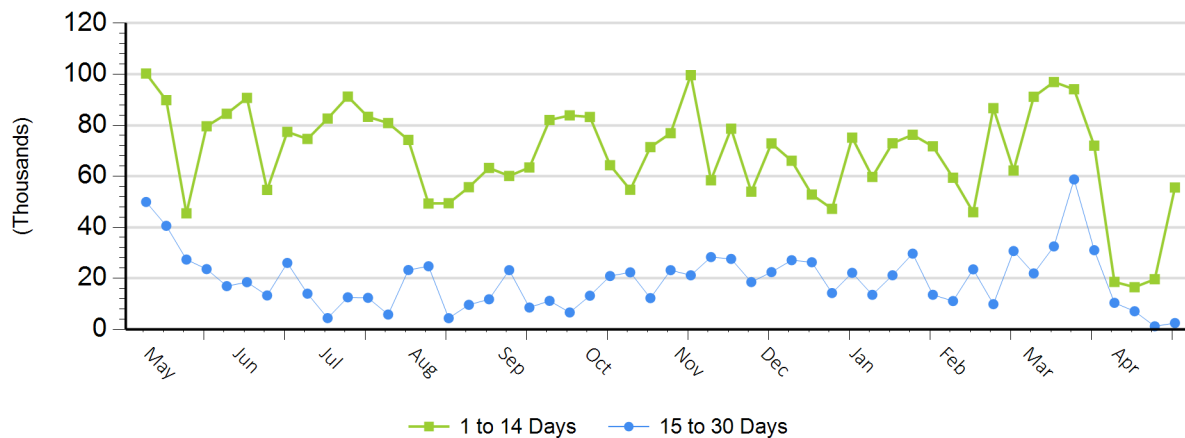
Avg Price (1 to 14 Days)

\$154.22

Avg Price (15 to 30 Days)

\$150.63

Weekly Negotiated Head Count by Delivery Period



For more Information about this report, please visit this link: [National Weekly Fed Cattle Comprehensive Overview](#)