



National Weekly Fed Cattle Comprehensive

Agricultural Marketing Service

Livestock, Poultry, and Grain Market News

April 14, 2020

Weighted Average Prices

(Weekly Information from 2pm Previous Monday to 10am Current Monday; Includes Negotiated, Formula Nets, Contract Nets, & Grid Nets)"

All Steers & Heifers (Beef Type Cattle)

Purchasing Basis	% Choice	Head	Avg Price	Week Ago Change	Year Ago Change
Dressed	> 65% Choice	231,028	\$186.32	(\$0.30) ↓	(\$17.13) ↓
	< 65% Choice	29,045	\$180.09	(\$4.63) ↓	(\$17.13) ↓
	Total all Grades	260,073	\$185.63	(\$0.82) ↓	(\$17.11) ↓
Live	> 65% Choice	31,533	\$113.86	(\$4.08) ↓	(\$12.66) ↓
	< 65% Choice	13,268	\$114.24	(\$5.70) ↓	(\$10.73) ↓
	Total all Grades	44,801	\$113.97	(\$4.30) ↓	(\$12.37) ↓

Dairy Bred

Purchasing Basis	% Choice	Head	Avg Price	Week Ago Change	Year Ago Change
Dressed	> 65% Choice	26,329	\$173.22	(\$1.07) ↓	(\$8.01) ↓
	< 65% Choice	1,981	\$163.62	\$0.82 ↑	(\$16.82) ↓
	Total all Grades	28,310	\$172.55	(\$0.87) ↓	(\$8.56) ↓
Live	> 65% Choice	2,465	\$99.45	(\$0.17) ↓	(\$10.74) ↓
	< 65% Choice	34	\$98.50	(\$2.46) ↓	(\$15.55) ↓
	Total all Grades	2,499	\$99.43	(\$0.38) ↓	(\$12.03) ↓

Spread Comparison Values

Beef Type minus Dairy Type

(Weekly Information from 2pm Previous Monday to 10am Current Monday; Includes Negotiated, Formula Nets, Contract Nets, & Grid Nets)

Purchasing Basis	Current	Week Ago Change	Year Ago Change
Dressed	\$13.08 ↑	\$13.03 ↑	\$21.63 ↑
Live	\$14.54 ↑	\$18.46 ↑	\$14.88 ↑

Formula Net minus Negotiated

(Beef Type Cattle; All live transactions converted to a dressed price)

52 Week Rolling Average

\$2.05





National Weekly Fed Cattle Comprehensive

Agricultural Marketing Service
Livestock, Poultry, and Grain Market News

April 14, 2020

Formula Base minus Negotiated

(Beef Type Cattle; All live transactions converted to a dressed price)

52 Week Rolling Average

(\$1.00)



Formula Net minus Formula Base

(Beef Type Cattle; All live transactions converted to a dressed price)

52 Week Rolling Average

\$3.05



Grading % and Carcass Weights

(Beef Type Cattle; Includes Formula Net, Contract Net, and Grid Net; Grading % includes Choice & higher; Carcass Weight includes all grades; All live transactions converted to a dressed basis)

Grading %

81.8

Week Ago

82.7



Dressed Weight

860.8

Week Ago

863.2



Daily Formula Base Volume

Tue Apr 07

35,452

Wed Apr 08

36,282

Thu Apr 09

45,325

Fri Apr 10

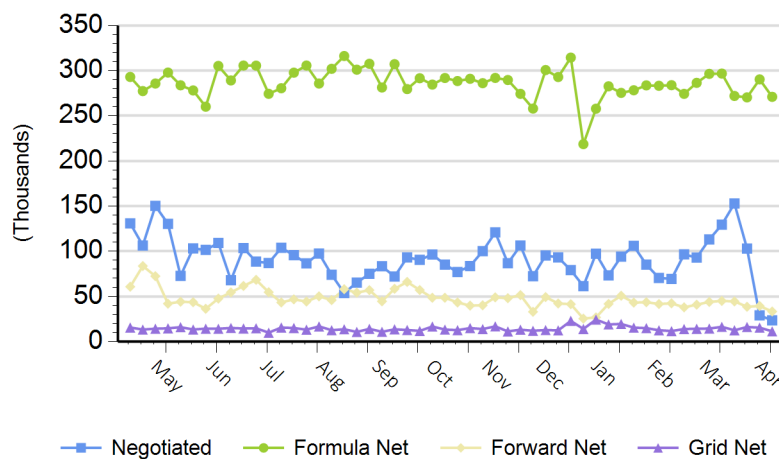
25,640

Mon Apr 13

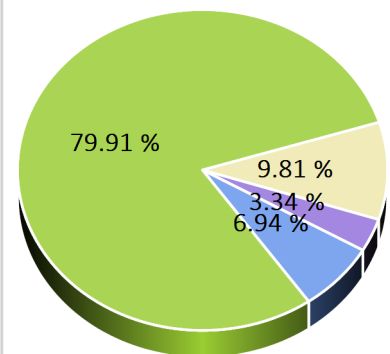
100,363

Purchasing Basis Volume

Weekly Purchasing Basis



Previous Week





National Weekly Fed Cattle Comprehensive

Agricultural Marketing Service
Livestock, Poultry, and Grain Market News

April 14, 2020

Weekly Negotiated Avg. Price by Delivery Period

(Beef Type Cattle: All live transactions converted to dressed price)

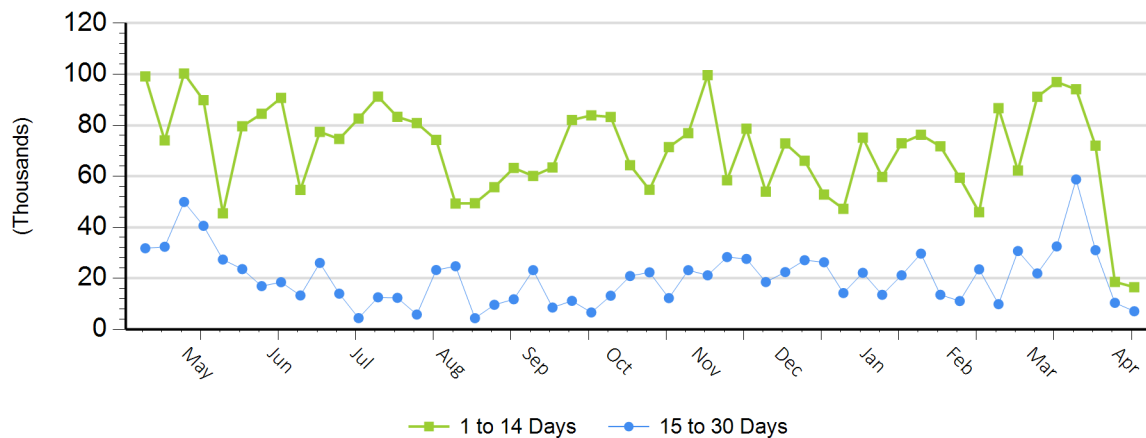
Avg Price (1 to 14 Days)

\$165.17

Avg Price (15 to 30 Days)

\$167.83

Weekly Negotiated Head Count by Delivery Period



For more Information about this report, please visit this link: [National Weekly Fed Cattle Comprehensive Overview](#)