



# National Weekly Fed Cattle Comprehensive

Agricultural Marketing Service

Livestock, Poultry, and Grain Market News

April 07, 2020

## Weighted Average Prices

(Weekly Information from 2pm Previous Monday to 10am Current Monday; Includes Negotiated, Formula Nets, Contract Nets, & Grid Nets)"

### All Steers & Heifers (Beef Type Cattle)

Purchasing Basis	% Choice	Head	Avg Price	Week Ago Change	Year Ago Change
Dressed	> 65% Choice	258,464	\$186.62	\$5.58	(\$18.73)
	< 65% Choice	25,411	\$184.72	\$10.53	(\$14.53)
	Total all Grades	283,875	\$186.45	\$5.92	(\$18.38)
Live	> 65% Choice	44,338	\$117.94	(\$0.13)	(\$8.90)
	< 65% Choice	8,782	\$119.94	\$3.49	(\$6.11)
	Total all Grades	53,120	\$118.27	\$0.40	(\$8.49)

### Dairy Bred

Purchasing Basis	% Choice	Head	Avg Price	Week Ago Change	Year Ago Change
Dressed	> 65% Choice	29,256	\$174.29	\$6.21	(\$9.52)
	< 65% Choice	2,403	\$162.80	\$5.72	(\$20.95)
	Total all Grades	31,659	\$173.42	\$6.20	(\$10.38)
Live	> 65% Choice	2,443	\$99.62	\$1.56	(\$12.53)
	< 65% Choice	405	\$100.96	\$7.41	(\$11.37)
	Total all Grades	2,848	\$99.81	\$2.62	(\$12.38)

## Spread Comparison Values

### Beef Type minus Dairy Type

(Weekly Information from 2pm Previous Monday to 10am Current Monday; Includes Negotiated, Formula Nets, Contract Nets, & Grid Nets)

Purchasing Basis	Current	Week Ago Change	Year Ago Change
Dressed	\$13.03	\$13.31	\$21.03
Live	\$18.46	\$20.68	\$14.57

### Formula Net minus Negotiated

(Beef Type Cattle; All live transactions converted to a dressed price)

#### 52 Week Rolling Average

\$1.96



# National Weekly Fed Cattle Comprehensive

Agricultural Marketing Service  
Livestock, Poultry, and Grain Market News

April 07, 2020

## Formula Base minus Negotiated

(Beef Type Cattle; All live transactions converted to a dressed price)

52 Week Rolling Average

(\$1.02)



## Formula Net minus Formula Base

(Beef Type Cattle; All live transactions converted to a dressed price)

52 Week Rolling Average

\$2.98



## Grading % and Carcass Weights

(Beef Type Cattle; Includes Formula Net, Contract Net, and Grid Net; Grading % includes Choice & higher; Carcass Weight includes all grades; All live transactions converted to a dressed basis)

Grading %

82.7

Week Ago

83.2



Dressed Weight

863.2

Week Ago

867.5



## Daily Formula Base Voume

Tue Mar 31

57,335

Wed Apr 01

46,403

Thu Apr 02

53,458

Fri Apr 03

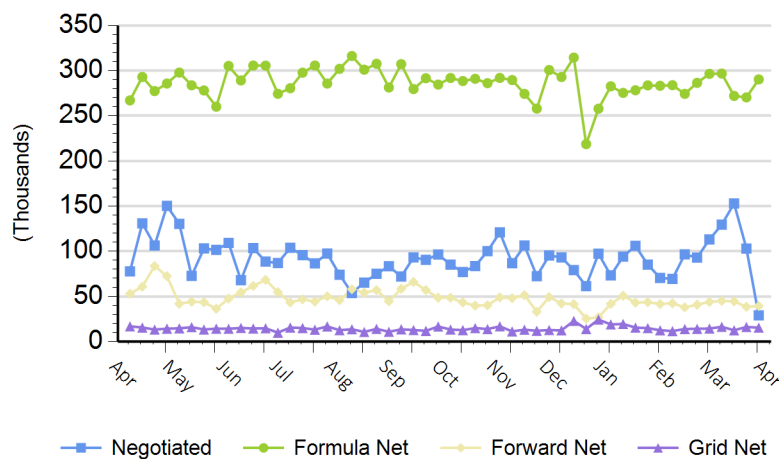
28,425

Mon Apr 06

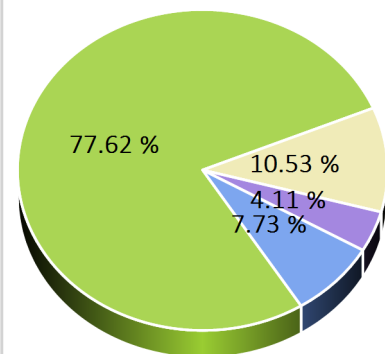
125,520

## Purchasing Basis Volume

### Weekly Purchasing Basis



### Previous Week





# National Weekly Fed Cattle Comprehensive

Agricultural Marketing Service  
Livestock, Poultry, and Grain Market News

April 07, 2020

## Weekly Negotiated Avg. Price by Delivery Period

(Beef Type Cattle: All live transactions converted to dressed price)

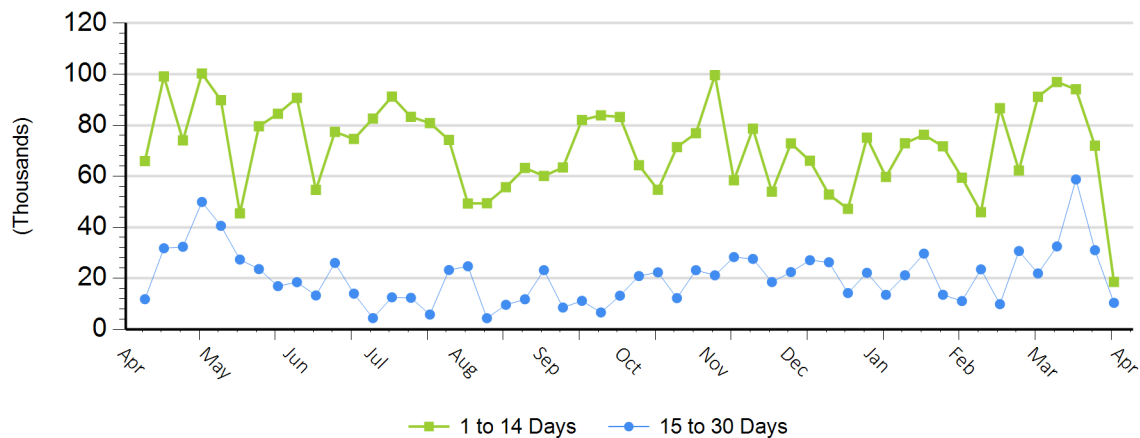
Avg Price (1 to 14 Days)

\$175.07

Avg Price (15 to 30 Days)

\$178.57

## Weekly Negotiated Head Count by Delivery Period



For more Information about this report, please visit this link: [National Weekly Fed Cattle Comprehensive Overview](#)