



# National Weekly Fed Cattle Comprehensive

Agricultural Marketing Service

Livestock, Poultry, and Grain Market News

March 31, 2020

## Weighted Average Prices

(Weekly Information from 2pm Previous Monday to 10am Current Monday; Includes Negotiated, Formula Nets, Contract Nets, & Grid Nets)"

### All Steers & Heifers (Beef Type Cattle)

Purchasing Basis	% Choice	Head	Avg Price	Week Ago Change	Year Ago Change
Dressed	> 65% Choice	268,258	\$181.04	\$1.49	(\$24.58)
	< 65% Choice	21,565	\$174.19	(\$1.00)	(\$26.47)
	Total all Grades	289,823	\$180.53	\$1.40	(\$24.66)
Live	> 65% Choice	88,804	\$118.07	\$7.53	(\$9.69)
	< 65% Choice	12,418	\$116.45	\$6.92	(\$10.37)
	Total all Grades	101,222	\$117.87	\$7.39	(\$9.79)

### Dairy Bred

Purchasing Basis	% Choice	Head	Avg Price	Week Ago Change	Year Ago Change
Dressed	> 65% Choice	29,304	\$168.08	(\$1.04)	(\$15.91)
	< 65% Choice	2,480	\$157.08	(\$5.69)	(\$19.60)
	Total all Grades	31,784	\$167.22	(\$1.53)	(\$16.01)
Live	> 65% Choice	2,327	\$98.06	\$4.55	(\$13.81)
	< 65% Choice	558	\$93.55	(\$3.30)	(\$22.05)
	Total all Grades	2,885	\$97.19	\$2.56	(\$16.50)

## Spread Comparison Values

### Beef Type minus Dairy Type

(Weekly Information from 2pm Previous Monday to 10am Current Monday; Includes Negotiated, Formula Nets, Contract Nets, & Grid Nets)

Purchasing Basis	Current	Week Ago Change	Year Ago Change
Dressed	\$13.31	\$10.38	\$21.96
Live	\$20.68	\$15.85	\$13.97

### Formula Net minus Negotiated

(Beef Type Cattle; All live transactions converted to a dressed price)

#### 52 Week Rolling Average

\$1.93



# National Weekly Fed Cattle Comprehensive

Agricultural Marketing Service  
Livestock, Poultry, and Grain Market News

March 31, 2020

## Formula Base minus Negotiated

(Beef Type Cattle; All live transactions converted to a dressed price)

52 Week Rolling Average

(\$1.08)



## Formula Net minus Formula Base

(Beef Type Cattle; All live transactions converted to a dressed price)

52 Week Rolling Average

\$3.01



## Grading % and Carcass Weights

(Beef Type Cattle; Includes Formula Net, Contract Net, and Grid Net; Grading % includes Choice & higher; Carcass Weight includes all grades; All live transactions converted to a dressed basis)

Grading %

83.2

Week Ago

83.0



Dressed Weight

867.5

Week Ago

872.5



## Daily Formula Base Volume

Tue Mar 24

105,407

Wed Mar 25

42,557

Thu Mar 26

44,004

Fri Mar 27

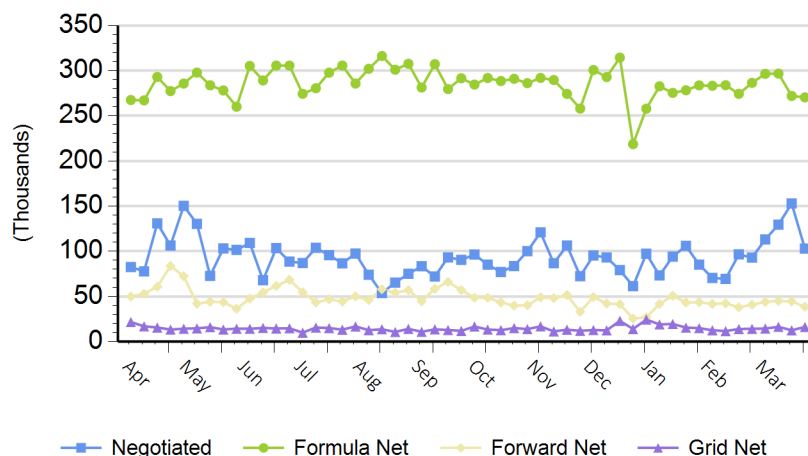
28,129

Mon Mar 30

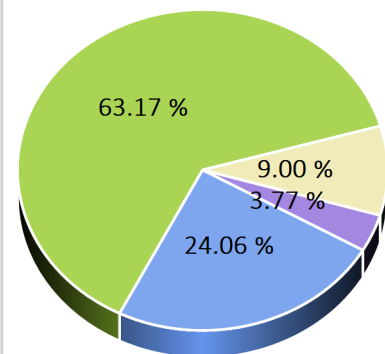
105,562

## Purchasing Basis Volume

### Weekly Purchasing Basis



### Previous Week





# National Weekly Fed Cattle Comprehensive

Agricultural Marketing Service  
Livestock, Poultry, and Grain Market News

March 31, 2020

## Weekly Negotiated Avg. Price by Delivery Period

(Beef Type Cattle: All live transactions converted to dressed price)

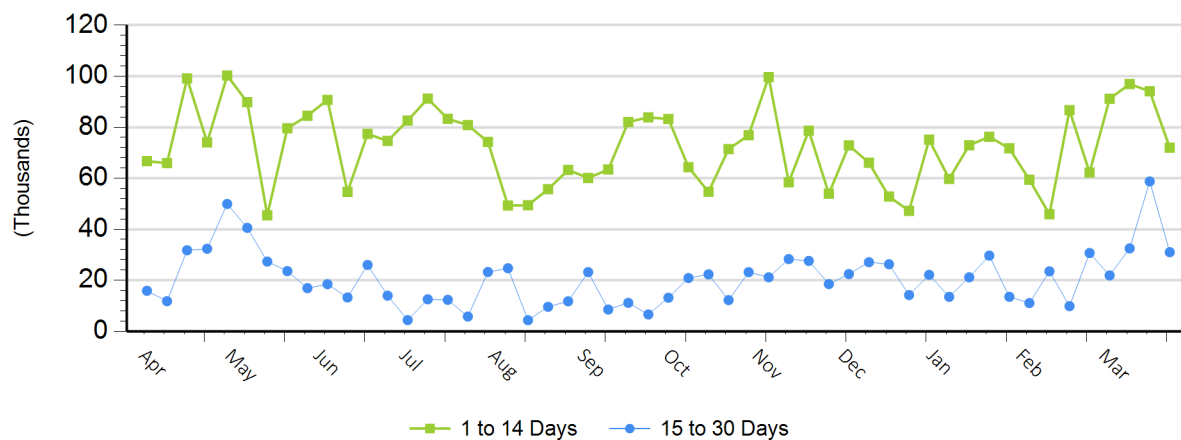
**Avg Price (1 to 14 Days)**

\$189.05

**Avg Price (15 to 30 Days)**

\$187.56

## Weekly Negotiated Head Count by Delivery Period



For more Information about this report, please visit this link: [National Weekly Fed Cattle Comprehensive Overview](#)