



# National Weekly Fed Cattle Comprehensive

Agricultural Marketing Service

Livestock, Poultry, and Grain Market News

March 10, 2020

## Weighted Average Prices

(Weekly Information from 2pm Previous Monday to 10am Current Monday; Includes Negotiated, Formula Nets, Contract Nets, & Grid Nets)"

### All Steers & Heifers (Beef Type Cattle)

Purchasing Basis	% Choice	Head	Avg Price	Week Ago Change	Year Ago Change
Dressed	> 65% Choice	280,125	\$188.73	(\$2.64) ↓	(\$15.22) ↓
	< 65% Choice	28,225	\$185.15	(\$3.98) ↓	(\$15.18) ↓
	Total all Grades	308,350	\$188.40	(\$2.76) ↓	(\$15.15) ↓
Live	> 65% Choice	106,388	\$115.10	(\$3.18) ↓	(\$13.23) ↓
	< 65% Choice	10,827	\$116.69	(\$1.98) ↓	(\$10.68) ↓
	Total all Grades	117,215	\$115.24	(\$3.09) ↓	(\$12.99) ↓

### Dairy Bred

Purchasing Basis	% Choice	Head	Avg Price	Week Ago Change	Year Ago Change
Dressed	> 65% Choice	31,284	\$175.22	(\$1.85) ↓	(\$5.42) ↓
	< 65% Choice	2,422	\$172.65	\$2.44 ↑	(\$6.22) ↓
	Total all Grades	33,706	\$175.04	(\$1.25) ↓	(\$5.40) ↓
Live	> 65% Choice	2,968	\$104.32	(\$2.30) ↓	(\$6.06) ↓
	< 65% Choice	1,541	\$104.54	(\$1.33) ↓	(\$15.17) ↓
	Total all Grades	4,509	\$104.40	(\$1.92) ↓	(\$10.02) ↓

## Spread Comparison Values

### Beef Type minus Dairy Type

(Weekly Information from 2pm Previous Monday to 10am Current Monday; Includes Negotiated, Formula Nets, Contract Nets, & Grid Nets)

Purchasing Basis	Current	Week Ago Change	Year Ago Change
Dressed	\$13.36 ↑	\$14.87 ↑	\$23.11 ↑
Live	\$10.84 ↑	\$12.01 ↑	\$13.81 ↑

### Formula Net minus Negotiated

(Beef Type Cattle; All live transactions converted to a dressed price)

#### 52 Week Rolling Average

\$1.68





# National Weekly Fed Cattle Comprehensive

Agricultural Marketing Service  
Livestock, Poultry, and Grain Market News

March 10, 2020

## Formula Base minus Negotiated

(Beef Type Cattle; All live transactions converted to a dressed price)

52 Week Rolling Average

(\$1.28)



## Formula Net minus Formula Base

(Beef Type Cattle; All live transactions converted to a dressed price)

52 Week Rolling Average

\$2.96



## Grading % and Carcass Weights

(Beef Type Cattle; Includes Formula Net, Contract Net, and Grid Net; Grading % includes Choice & higher; Carcass Weight includes all grades; All live transactions converted to a dressed basis)

Grading %

83.0

Week Ago

82.9



Dressed Weight

871.1

Week Ago

878.6



## Daily Formula Base Volume

Tue Mar 03

47,721

Wed Mar 04

46,813

Thu Mar 05

48,824

Fri Mar 06

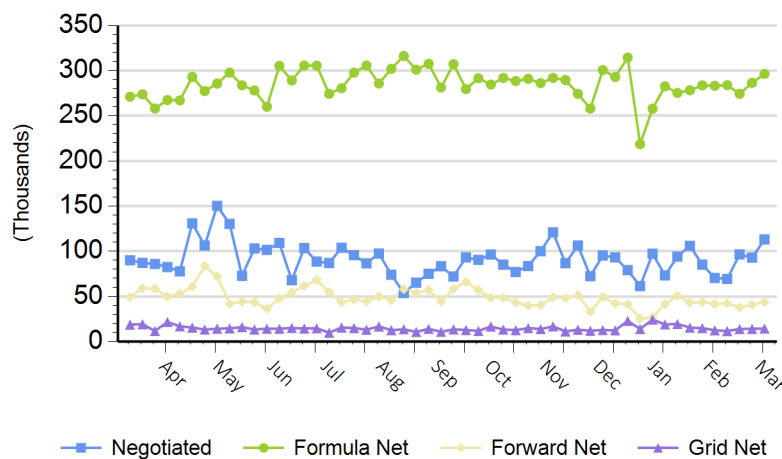
30,541

Mon Mar 09

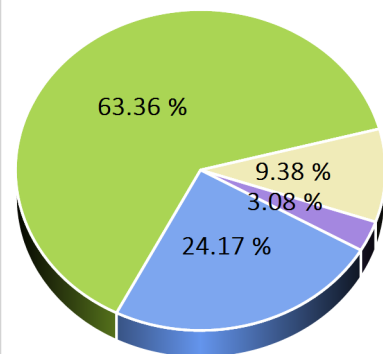
124,240

## Purchasing Basis Volume

### Weekly Purchasing Basis



### Previous Week





# National Weekly Fed Cattle Comprehensive

Agricultural Marketing Service  
Livestock, Poultry, and Grain Market News

March 10, 2020

## Weekly Negotiated Avg. Price by Delivery Period

(Beef Type Cattle: All live transactions converted to dressed price)

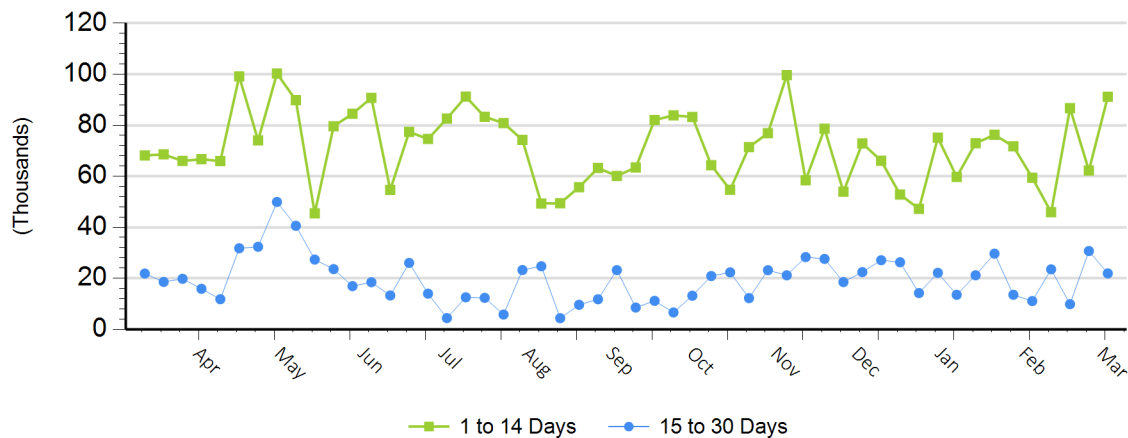
Avg Price (1 to 14 Days)

\$179.53

Avg Price (15 to 30 Days)

\$179.82

## Weekly Negotiated Head Count by Delivery Period



For more Information about this report, please visit this link: [National Weekly Fed Cattle Comprehensive Overview](#)