



# National Weekly Fed Cattle Comprehensive

Agricultural Marketing Service

Livestock, Poultry, and Grain Market News

April 16, 2019

## Weighted Average Prices

(Weekly Information from 2pm Previous Monday to 10am Current Monday; Includes Negotiated, Formula Nets, Contract Nets, & Grid Nets)"

### All Steers & Heifers (Beef Type Cattle)

Purchasing Basis	% Choice	Head	Avg Price	Week Ago Change	Year Ago Change
Dressed	> 65% Choice	243,100	\$203.45	(\$1.90) ↓	\$10.25 ↑
	< 65% Choice	30,826	\$197.22	(\$2.03) ↓	\$7.35 ↑
	Total all Grades	273,926	\$202.74	(\$2.09) ↓	\$9.95 ↑
Live	> 65% Choice	84,082	\$126.52	(\$0.32) ↓	\$6.12 ↑
	< 65% Choice	11,166	\$124.97	(\$1.08) ↓	\$6.15 ↑
	Total all Grades	95,248	\$126.34	(\$0.42) ↓	\$6.30 ↑

### Dairy Bred

Purchasing Basis	% Choice	Head	Avg Price	Week Ago Change	Year Ago Change
Dressed	> 65% Choice	29,403	\$181.23	(\$2.58) ↓	\$6.53 ↑
	< 65% Choice	4,830	\$180.44	(\$3.31) ↓	\$4.99 ↑
	Total all Grades	34,233	\$181.11	(\$2.69) ↓	\$6.31 ↑
Live	> 65% Choice	3,547	\$110.19	(\$1.96) ↓	\$4.99 ↑
	< 65% Choice	1,747	\$114.05	\$1.72 ↑	\$3.60 ↑
	Total all Grades	5,294	\$111.46	(\$0.73) ↓	\$4.11 ↑

## Spread Comparison Values

### Beef Type minus Dairy Type

(Weekly Information from 2pm Previous Monday to 10am Current Monday; Includes Negotiated, Formula Nets, Contract Nets, & Grid Nets)

Purchasing Basis	Current	Week Ago Change	Year Ago Change
Dressed	\$21.63 ↑	\$21.03 ↑	\$17.99 ↑
Live	\$14.88 ↑	\$14.57 ↑	\$12.69 ↑

### Formula Net minus Negotiated

(Beef Type Cattle; All live transactions converted to a dressed price)

#### 52 Week Rolling Average

\$2.85





# National Weekly Fed Cattle Comprehensive

Agricultural Marketing Service  
Livestock, Poultry, and Grain Market News

April 16, 2019

## Formula Base minus Negotiated

(Beef Type Cattle; All live transactions converted to a dressed price)

52 Week Rolling Average

\$0.73



## Formula Net minus Formula Base

(Beef Type Cattle; All live transactions converted to a dressed price)

52 Week Rolling Average

\$2.12



## Grading % and Carcass Weights

(Beef Type Cattle; Includes Formula Net, Contract Net, and Grid Net; Grading % includes Choice & higher; Carcass Weight includes all grades; All live transactions converted to a dressed basis)

Grading %

80.6

Week Ago

81.9



Dressed Weight

840.4

Week Ago

840.9



## Daily Formula Base Volume

Tue Apr 09

60,334

Wed Apr 10

35,090

Thu Apr 11

56,757

Fri Apr 12

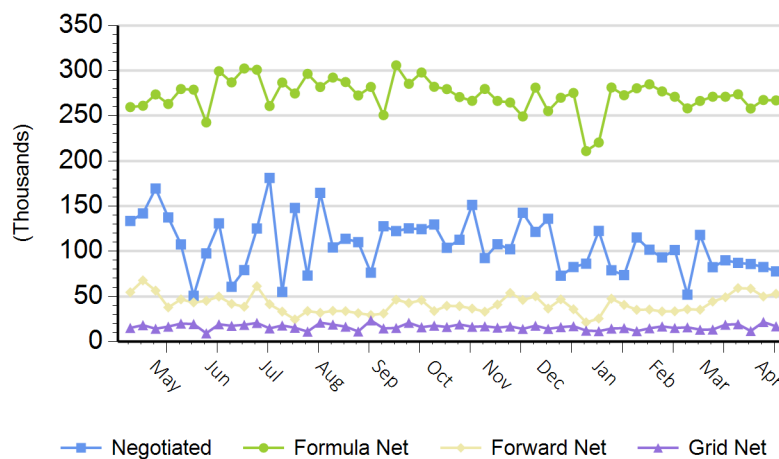
25,626

Mon Apr 15

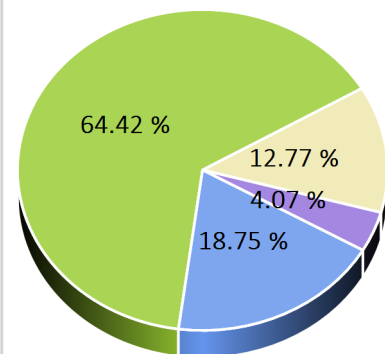
125,277

## Purchasing Basis Volume

### Weekly Purchasing Basis



### Previous Week





# National Weekly Fed Cattle Comprehensive

Agricultural Marketing Service  
Livestock, Poultry, and Grain Market News

April 16, 2019

## Weekly Negotiated Avg. Price by Delivery Period

(Beef Type Cattle: All live transactions converted to dressed price)

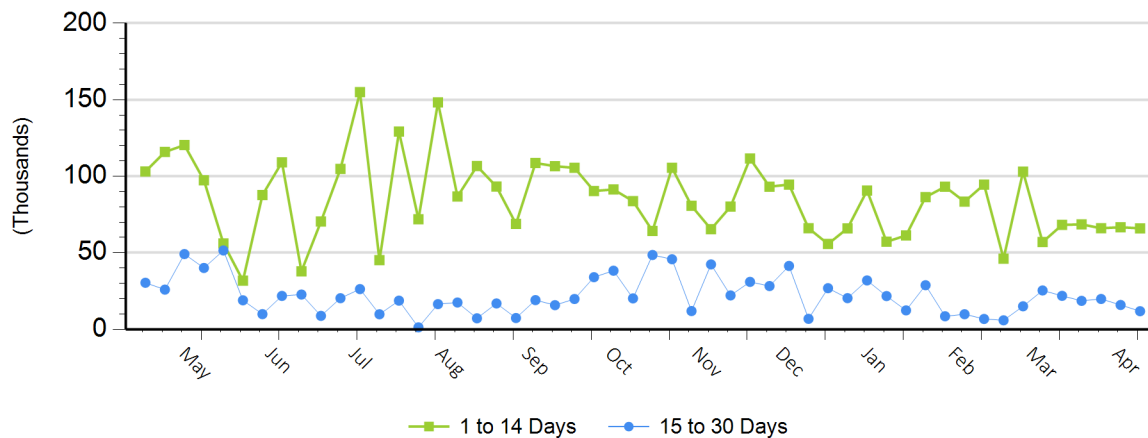
Avg Price (1 to 14 Days)

\$201.11

Avg Price (15 to 30 Days)

\$203.11

## Weekly Negotiated Head Count by Delivery Period



For more Information about this report, please visit this link: [National Weekly Fed Cattle Comprehensive Overview](#)