

## Daily Direct Steer and Heifer Slaughter Cattle Summary

For Trade on:

Friday, April 07, 2023

<a href="#">LM CT100</a>	<b>5-AREA</b>	<a href="#">LM CT109</a>
Neg. Cash Volume:	974	Dressed Formula Vol: 39,572
Live Steer Avg:	\$174.62	Steer/Heifer Avg: \$269.20
Live Heifer Avg:	\$175.37	Dressed Neg. Grid Vol: 3,917
Dressed Steer Avg:	\$279.58	Steer/Heifer Avg: \$269.94
Dressed Heifer Avg:	N/A	<b>TOTAL VOLUME: 44,463</b>
<a href="#">LM CT106</a>	<b>TOTAL WK TO DATE VOLUME:</b>	<b>313,253</b>
Committed:	<b>57,214</b>	Delivered: <b>65,701</b>

<a href="#">LM CT118</a>	<b>TX-OK-NM</b>	<a href="#">LM CT109</a>
Neg. Cash Volume:	0	Dressed Formula Vol: 14,274
Live Steer Avg:	N/A	Steer/Heifer Avg: \$263.60
Live Heifer Avg:	N/A	Dressed Neg. Grid Vol: 0
Dressed Steer Avg:	N/A	Steer/Heifer Avg: N/A
Dressed Heifer Avg:	N/A	<b>TOTAL VOLUME: 14,274</b>
<a href="#">LM CT106</a>	<b>TOTAL WK TO DATE VOLUME:</b>	<b>87,178</b>
Committed:	12,566	Delivered: 23,596

<a href="#">LM CT121</a>	<b>KANSAS</b>	<a href="#">LM CT109</a>
Neg. Cash Volume:	0	Dressed Formula Vol: 13,424
Live Steer Avg:	N/A	Steer/Heifer Avg: \$267.70
Live Heifer Avg:	N/A	Dressed Neg. Grid Vol: 484
Dressed Steer Avg:	N/A	Steer/Heifer Avg: \$267.22
Dressed Heifer Avg:	N/A	<b>TOTAL VOLUME: 13,908</b>
<a href="#">LM CT106</a>	<b>TOTAL WK TO DATE VOLUME:</b>	<b>81,719</b>
Committed:	8,026	Delivered: 16,812

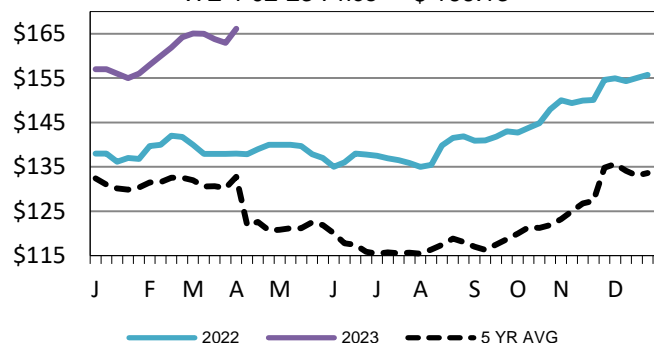
<a href="#">LM CT124</a>	<b>NEBRASKA</b>	<a href="#">LM CT109</a>
Neg. Cash Volume:	0	Dressed Formula Vol: 4,202
Live Steer Avg:	N/A	Steer/Heifer Avg: \$282.74
Live Heifer Avg:	N/A	Dressed Neg. Grid Vol: 1,403
Dressed Steer Avg:	N/A	Steer/Heifer Avg: \$272.30
Dressed Heifer Avg:	N/A	<b>TOTAL VOLUME: 5,605</b>
<a href="#">LM CT106</a>	<b>TOTAL WK TO DATE VOLUME:</b>	<b>69,189</b>
Committed:	14,883	Delivered: 11,635

<a href="#">LM CT134</a>	<b>COLORADO</b>	<a href="#">LM CT109</a>
Neg. Cash Volume:	0	Dressed Formula Vol: 5,359
Live Steer Avg:	N/A	Steer/Heifer Avg: \$275.40
Live Heifer Avg:	N/A	Dressed Neg. Grid Vol: 80
Dressed Steer Avg:	N/A	Steer/Heifer Avg: \$274.89
Dressed Heifer Avg:	N/A	<b>TOTAL VOLUME: 5,439</b>
<a href="#">LM CT106</a>	<b>TOTAL WK TO DATE VOLUME:</b>	<b>26,328</b>
Committed:	6,256	Delivered: 4,958

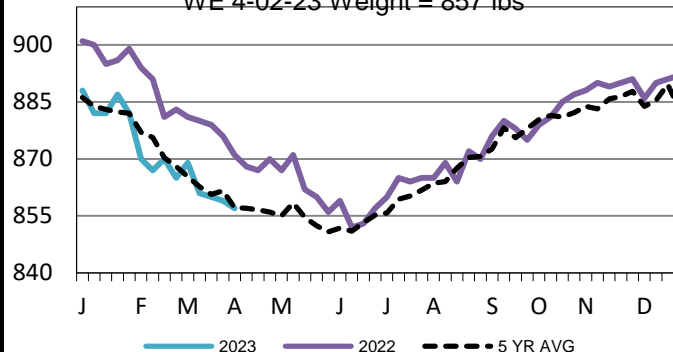
<a href="#">LM CT137</a>	<b>IA-MN</b>	<a href="#">LM CT109</a>
Neg. Cash Volume:	974	Dressed Formula Vol: 2,582
Live Steer Avg:	\$174.62	Steer/Heifer Avg: \$273.86
Live Heifer Avg:	\$175.37	Dressed Neg. Grid Vol: 1,986
Dressed Steer Avg:	\$279.58	Steer/Heifer Avg: \$270.77
Dressed Heifer Avg:	N/A	<b>TOTAL VOLUME: 5,542</b>
<a href="#">LM CT106</a>	<b>TOTAL WK TO DATE VOLUME:</b>	<b>44,416</b>
Committed:	15,483	Delivered: 8,700

On Friday negotiated cash trade was at a standstill in the Southern Plains and Nebraska. In the Western Cornbelt negotiated cash trade was mostly inactive on light demand, however, not enough purchases for a market trend. On Wednesday in the Southern Plains live purchases traded at 170.00. In Nebraska on Wednesday live purchases traded from 172.00-177.00 with dressed purchases from 275.00- 280.00. The latest established market was on Thursday in the Western Cornbelt with live purchases from 175.00-177.00 and dressed purchases at 280.00.

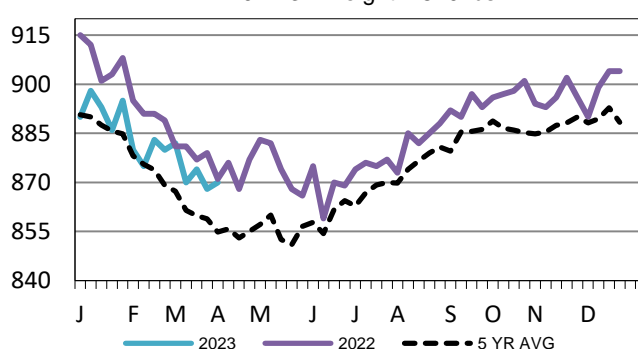
**TX-OK-NM Wkly Live Steer Wtd Avg**  
WE 4-02-23 Price = \$ 166.13



**5-Area Formula Carcass Weight**  
WE 4-02-23 Weight = 857 lbs



**Kansas Formula Carcass Weights**  
WE 4-02-23 Weight = 870 lbs



## USDA Livestock, Poultry and Grain Market News

Kansas City, MO

Phone: 816-676-7000

[stjoe.lpgmn@ams.usda.gov](mailto:stjoe.lpgmn@ams.usda.gov)