

Thursday, March 23, 2023

Daily Direct Steer and Heifer Slaughter Cattle Summary

For Trade on:

Friday, March 24, 2023

LM CT100	5-AREA	LM CT109
Neg. Cash Volume:	6,246	Dressed Formula Vol: 50,105
Live Steer Avg:	\$165.57	Steer/Heifer Avg: \$264.85
Live Heifer Avg:	\$165.24	Dressed Neg. Grid Vol: 2,713
Dressed Steer Avg:	\$264.00	Steer/Heifer Avg: \$265.42
Dressed Heifer Avg:	\$264.50	TOTAL VOLUME: 59,064
LM CT106	TOTAL WK TO DATE VOLUME:	249,828
Committed:	57,096	Delivered: 63,376

On Thursday negotiated cash trade was slow on moderate demand in the Western Cornbelt. A few live purchases were reported from 164.00-167.00, however not enough for an adequate market test. The latest established market in the Western Cornbelt was on Wednesday with live purchases from 164.00-166.00, mostly at 165.00 with dressed purchases from 264.00-265.00, mostly at 265.00. On Thursday in the Southern Plains and Nebraska trade was mostly inactive on light to moderate demand. The latest established market in the Southern Plains was on Wednesday with live purchases at 163.00. In Nebraska on Wednesday, live purchases traded from 164.00- 165.00 with dressed purchases at 265.00.

LM CT118	TX-OK-NM	LM CT109
Neg. Cash Volume:	66	Dressed Formula Vol: 17,270
Live Steer Avg:	\$163.00	Steer/Heifer Avg: \$260.12
Live Heifer Avg:	N/A	Dressed Neg. Grid Vol: 0
Dressed Steer Avg:	N/A	Steer/Heifer Avg: N/A
Dressed Heifer Avg:	N/A	TOTAL VOLUME: 17,336
LM CT106	TOTAL WK TO DATE VOLUME:	65,789
Committed:	4,369	Delivered: 16,236

LM CT121	KANSAS	LM CT109
Neg. Cash Volume:	193	Dressed Formula Vol: 13,907
Live Steer Avg:	\$163.00	Steer/Heifer Avg: \$261.87
Live Heifer Avg:	N/A	Dressed Neg. Grid Vol: 1,162
Dressed Steer Avg:	N/A	Steer/Heifer Avg: \$261.24
Dressed Heifer Avg:	N/A	TOTAL VOLUME: 15,262
LM CT106	TOTAL WK TO DATE VOLUME:	71,531
Committed:	18,531	Delivered: 17,755

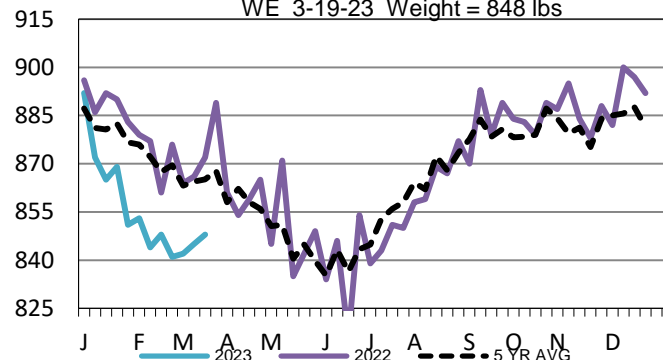
LM CT124	NEBRASKA	LM CT109
Neg. Cash Volume:	967	Dressed Formula Vol: 11,280
Live Steer Avg:	\$164.68	Steer/Heifer Avg: \$273.33
Live Heifer Avg:	N/A	Dressed Neg. Grid Vol: 754
Dressed Steer Avg:	\$264.09	Steer/Heifer Avg: \$261.24
Dressed Heifer Avg:	N/A	TOTAL VOLUME: 13,001
LM CT106	TOTAL WK TO DATE VOLUME:	54,302
Committed:	21,085	Delivered: 15,953

LM CT134	COLORADO	LM CT109
Neg. Cash Volume:	0	Dressed Formula Vol: 4,980
Live Steer Avg:	N/A	Steer/Heifer Avg: \$269.02
Live Heifer Avg:	N/A	Dressed Neg. Grid Vol: 42
Dressed Steer Avg:	N/A	Steer/Heifer Avg: \$276.12
Dressed Heifer Avg:	N/A	TOTAL VOLUME: 5,022
LM CT106	TOTAL WK TO DATE VOLUME:	19,911
Committed:	4,622	Delivered: 6,418

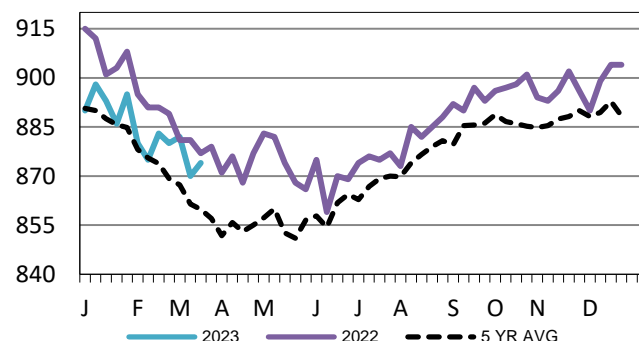
LM CT137	IA-MN	LM CT109
Neg. Cash Volume:	5,020	Dressed Formula Vol: 2,934
Live Steer Avg:	\$165.95	Steer/Heifer Avg: \$267.78
Live Heifer Avg:	\$164.24	Dressed Neg. Grid Vol: 873
Dressed Steer Avg:	\$264.86	Steer/Heifer Avg: \$269.50
Dressed Heifer Avg:	\$264.50	TOTAL VOLUME: 8,827
LM CT106	TOTAL WK TO DATE VOLUME:	38,326
Committed:	8,489	Delivered: 7,014

Colorado Formula Carcass Weights

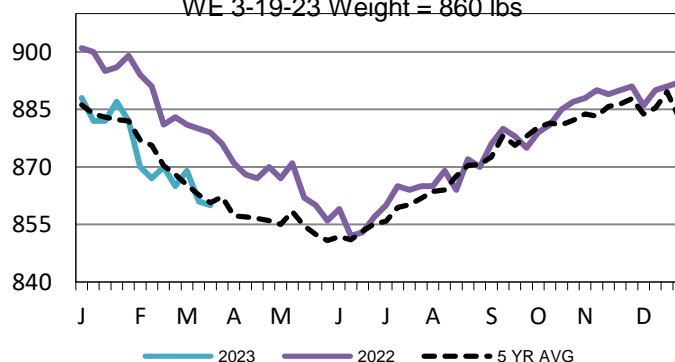
WE 3-19-23 Weight = 848 lbs

**Kansas Formula Carcass Weights**

WE 3-19-23 Weight = 874 lbs

**5-Area Formula Carcass Weight**

WE 3-19-23 Weight = 860 lbs

**USDA Livestock, Poultry and Grain Market News**

Kansas City, MO

Phone: 816-676-7000

stjoe.lpgmn@ams.usda.gov