

## Daily Direct Steer and Heifer Slaughter Cattle Summary

For Trade on:

Tuesday, March 14, 2023

<a href="#">LM CT100</a>	<b>5-AREA</b>	<a href="#">LM CT109</a>
<b>Neg. Cash Volume:</b>	14,267	<b>Dressed Formula Vol:</b> 44,112
<b>Live Steer Avg:</b>	\$164.21	<b>Steer/Heifer Avg:</b> \$267.06
<b>Live Heifer Avg:</b>	\$163.88	<b>Dressed Neg. Grid Vol:</b> 4,441
<b>Dressed Steer Avg:</b>	\$260.00	<b>Steer/Heifer Avg:</b> \$267.63
<b>Dressed Heifer Avg:</b>	N/A	<b>TOTAL VOLUME:</b> 62,820
<a href="#">LM CT106</a>	<b>TOTAL WK TO DATE VOLUME:</b>	<b>112,946</b>
<b>Committed:</b>	<b>54,884</b>	<b>Delivered:</b> 67,971

<a href="#">LM CT118</a>	<b>TX-OK-NM</b>	<a href="#">LM CT109</a>
<b>Neg. Cash Volume:</b>	2,714	<b>Dressed Formula Vol:</b> 15,331
<b>Live Steer Avg:</b>	\$164.00	<b>Steer/Heifer Avg:</b> \$264.08
<b>Live Heifer Avg:</b>	\$164.00	<b>Dressed Neg. Grid Vol:</b> 0
<b>Dressed Steer Avg:</b>	N/A	<b>Steer/Heifer Avg:</b> N/A
<b>Dressed Heifer Avg:</b>	N/A	<b>TOTAL VOLUME:</b> 18,045
<a href="#">LM CT106</a>	<b>TOTAL WK TO DATE VOLUME:</b>	<b>33,254</b>
<b>Committed:</b>	<b>16,530</b>	<b>Delivered:</b> 18,048

<a href="#">LM CT121</a>	<b>KANSAS</b>	<a href="#">LM CT109</a>
<b>Neg. Cash Volume:</b>	5,809	<b>Dressed Formula Vol:</b> 14,992
<b>Live Steer Avg:</b>	\$164.00	<b>Steer/Heifer Avg:</b> \$264.30
<b>Live Heifer Avg:</b>	\$164.00	<b>Dressed Neg. Grid Vol:</b> 955
<b>Dressed Steer Avg:</b>	\$260.00	<b>Steer/Heifer Avg:</b> \$264.59
<b>Dressed Heifer Avg:</b>	N/A	<b>TOTAL VOLUME:</b> 21,756
<a href="#">LM CT106</a>	<b>TOTAL WK TO DATE VOLUME:</b>	<b>42,510</b>
<b>Committed:</b>	<b>9,531</b>	<b>Delivered:</b> 19,716

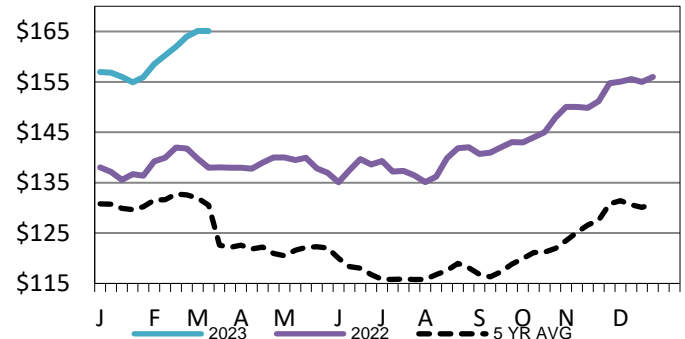
<a href="#">LM CT124</a>	<b>NEBRASKA</b>	<a href="#">LM CT109</a>
<b>Neg. Cash Volume:</b>	1,527	<b>Dressed Formula Vol:</b> 5,648
<b>Live Steer Avg:</b>	\$164.00	<b>Steer/Heifer Avg:</b> \$278.12
<b>Live Heifer Avg:</b>	\$164.00	<b>Dressed Neg. Grid Vol:</b> 2,217
<b>Dressed Steer Avg:</b>	N/A	<b>Steer/Heifer Avg:</b> \$266.25
<b>Dressed Heifer Avg:</b>	N/A	<b>TOTAL VOLUME:</b> 9,392
<a href="#">LM CT106</a>	<b>TOTAL WK TO DATE VOLUME:</b>	<b>14,938</b>
<b>Committed:</b>	<b>10,688</b>	<b>Delivered:</b> 14,932

<a href="#">LM CT134</a>	<b>COLORADO</b>	<a href="#">LM CT109</a>
<b>Neg. Cash Volume:</b>	0	<b>Dressed Formula Vol:</b> 6,048
<b>Live Steer Avg:</b>	N/A	<b>Steer/Heifer Avg:</b> \$271.24
<b>Live Heifer Avg:</b>	N/A	<b>Dressed Neg. Grid Vol:</b> 0
<b>Dressed Steer Avg:</b>	N/A	<b>Steer/Heifer Avg:</b> N/A
<b>Dressed Heifer Avg:</b>	N/A	<b>TOTAL VOLUME:</b> 6,048
<a href="#">LM CT106</a>	<b>TOTAL WK TO DATE VOLUME:</b>	<b>11,783</b>
<b>Committed:</b>	<b>6,980</b>	<b>Delivered:</b> 4,669

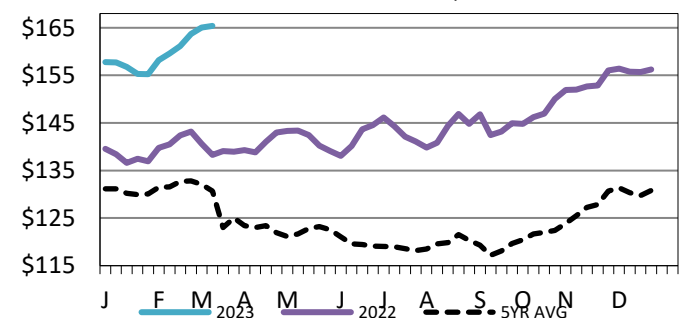
<a href="#">LM CT137</a>	<b>IA-MN</b>	<a href="#">LM CT109</a>
<b>Neg. Cash Volume:</b>	4,217	<b>Dressed Formula Vol:</b> 2,129
<b>Live Steer Avg:</b>	\$164.51	<b>Steer/Heifer Avg:</b> \$266.85
<b>Live Heifer Avg:</b>	\$163.00	<b>Dressed Neg. Grid Vol:</b> 1,345
<b>Dressed Steer Avg:</b>	N/A	<b>Steer/Heifer Avg:</b> \$272.39
<b>Dressed Heifer Avg:</b>	N/A	<b>TOTAL VOLUME:</b> 7,691
<a href="#">LM CT106</a>	<b>TOTAL WK TO DATE VOLUME:</b>	<b>10,769</b>
<b>Committed:</b>	<b>11,155</b>	<b>Delivered:</b> 10,606

On Tuesday in the Southern Plains was light to moderate on moderate demand. Compared to last week in the Southern Plains live purchases traded 1.00 lower at 164.00. In Nebraska on Tuesday trade was limited on light demand. A few early live purchases in Nebraska traded at 164.00, however not enough for an adequate market test. The latest established market in Nebraska was last week with live and dressed purchases at 165.00 and 265.00. In the Western Cornbelt on Tuesday trade was limited on light to moderate demand. A few early live purchases in the Western Cornbelt traded at 164.50, however not enough for an adequate market test. The latest established market in the Western Cornbelt was last week with live purchases from 164.00-167.00 with dressed purchases at 265.00.

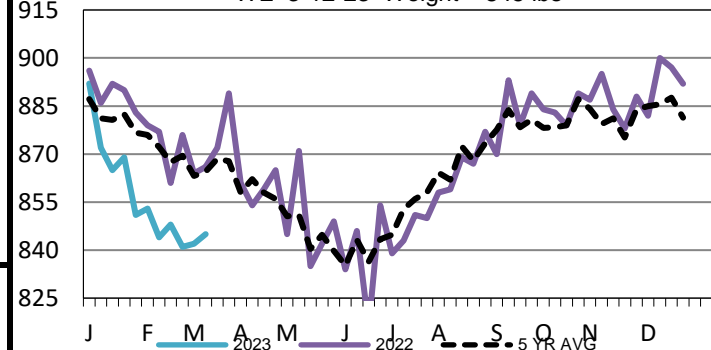
**Kansas Weekly Live Steer Weighted Average**  
WE 3-12-23 Price = \$165.07



**5-Area Live Steer Weighted Average**  
WE 3-12-23 Price = \$165.40



**Colorado Formula Carcass Weights**  
WE 3-12-23 Weight = 845 lbs



## USDA Livestock, Poultry and Grain Market News

Kansas City, MO

Phone: 816-676-7000

[stjoe.lpgmn@ams.usda.gov](mailto:stjoe.lpgmn@ams.usda.gov)