

## Daily Direct Steer and Heifer Slaughter Cattle Summary

For Trade on:

Friday, March 10, 2023

<a href="#">LM CT100</a>	<b>5-AREA</b>	<a href="#">LM CT109</a>
<b>Neg. Cash Volume:</b>	38,282	<b>Dressed Formula Vol:</b> 42,381
Live Steer Avg:	\$165.50	Steer/Heifer Avg: \$266.75
Live Heifer Avg:	\$165.02	<b>Dressed Neg. Grid Vol:</b> 3,074
Dressed Steer Avg:	\$265.20	Steer/Heifer Avg: \$264.81
Dressed Heifer Avg:	\$265.54	<b>TOTAL VOLUME:</b> 83,737
<a href="#">LM CT106</a>	<b>TOTAL WK TO DATE VOLUME:</b>	<b>304,163</b>
<b>Committed:</b>	<b>113,899</b>	<b>Delivered:</b> 72,552

<a href="#">LM CT118</a>	<b>TX-OK-NM</b>	<a href="#">LM CT109</a>
<b>Neg. Cash Volume:</b>	1,218	<b>Dressed Formula Vol:</b> 13,664
Live Steer Avg:	\$165.00	Steer/Heifer Avg: \$261.43
Live Heifer Avg:	\$165.00	<b>Dressed Neg. Grid Vol:</b> 0
Dressed Steer Avg:	N/A	Steer/Heifer Avg: N/A
Dressed Heifer Avg:	N/A	<b>TOTAL VOLUME:</b> 14,882
<a href="#">LM CT106</a>	<b>TOTAL WK TO DATE VOLUME:</b>	<b>78,368</b>
<b>Committed:</b>	<b>24,834</b>	<b>Delivered:</b> 14,640

<a href="#">LM CT121</a>	<b>KANSAS</b>	<a href="#">LM CT109</a>
<b>Neg. Cash Volume:</b>	7,549	<b>Dressed Formula Vol:</b> 16,941
Live Steer Avg:	\$165.15	Steer/Heifer Avg: \$264.30
Live Heifer Avg:	\$165.00	<b>Dressed Neg. Grid Vol:</b> 176
Dressed Steer Avg:	N/A	Steer/Heifer Avg: \$263.37
Dressed Heifer Avg:	N/A	<b>TOTAL VOLUME:</b> 24,666
<a href="#">LM CT106</a>	<b>TOTAL WK TO DATE VOLUME:</b>	<b>89,708</b>
<b>Committed:</b>	<b>32,332</b>	<b>Delivered:</b> 18,274

<a href="#">LM CT124</a>	<b>NEBRASKA</b>	<a href="#">LM CT109</a>
<b>Neg. Cash Volume:</b>	11,422	<b>Dressed Formula Vol:</b> 6,670
Live Steer Avg:	\$165.01	Steer/Heifer Avg: \$281.53
Live Heifer Avg:	\$165.07	<b>Dressed Neg. Grid Vol:</b> 1,981
Dressed Steer Avg:	\$265.47	Steer/Heifer Avg: \$265.18
Dressed Heifer Avg:	\$265.00	<b>TOTAL VOLUME:</b> 20,073
<a href="#">LM CT106</a>	<b>TOTAL WK TO DATE VOLUME:</b>	<b>67,017</b>
<b>Committed:</b>	<b>19,674</b>	<b>Delivered:</b> 16,713

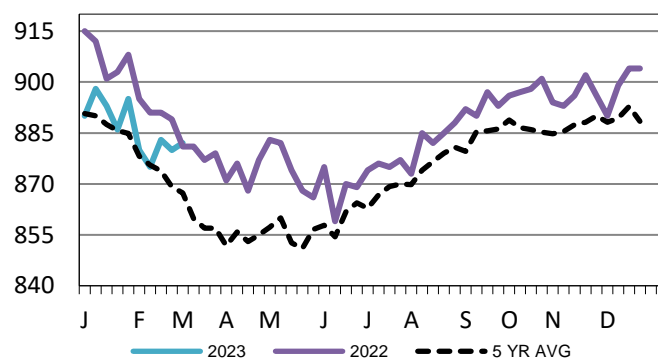
<a href="#">LM CT134</a>	<b>COLORADO</b>	<a href="#">LM CT109</a>
<b>Neg. Cash Volume:</b>	0	<b>Dressed Formula Vol:</b> 975
Live Steer Avg:	N/A	Steer/Heifer Avg: \$271.70
Live Heifer Avg:	N/A	<b>Dressed Neg. Grid Vol:</b> 0
Dressed Steer Avg:	N/A	Steer/Heifer Avg: N/A
Dressed Heifer Avg:	N/A	<b>TOTAL VOLUME:</b> 975
<a href="#">LM CT106</a>	<b>TOTAL WK TO DATE VOLUME:</b>	<b>25,826</b>
<b>Committed:</b>	<b>11,553</b>	<b>Delivered:</b> 8,046

<a href="#">LM CT137</a>	<b>IA-MN</b>	<a href="#">LM CT109</a>
<b>Neg. Cash Volume:</b>	18,093	<b>Dressed Formula Vol:</b> 4,321
Live Steer Avg:	\$165.90	Steer/Heifer Avg: \$269.60
Live Heifer Avg:	\$164.98	<b>Dressed Neg. Grid Vol:</b> 917
Dressed Steer Avg:	\$265.01	Steer/Heifer Avg: \$264.28
Dressed Heifer Avg:	\$266.42	<b>TOTAL VOLUME:</b> 23,331
<a href="#">LM CT106</a>	<b>TOTAL WK TO DATE VOLUME:</b>	<b>43,970</b>
<b>Committed:</b>	<b>25,506</b>	<b>Delivered:</b> 14,879

On Friday in Kansas, Nebraska and Western Cornbelt negotiated cash trading and demand were moderate. In Kansas and Nebraska, compared to last week, the bulk of live purchases traded steady at 165.00, with a few in Kansas up to 168.00. In Nebraska a few dressed purchases traded at 265.00, however, not enough for a full market trend. The last reported dressed market was on Thursday from 265.00-268.50. In the Western Cornbelt, compared to last week, the bulk of live purchases traded steady to 2.00 higher from 165.00-167.00 and dressed purchases traded steady to 3.00 higher at 265.00, with a few up to 267.00. In the Texas Panhandle negotiated cash trading was limited on light demand. Not enough purchases for a full market trend. The last reported live purchase market was on Thursday at 165.00.

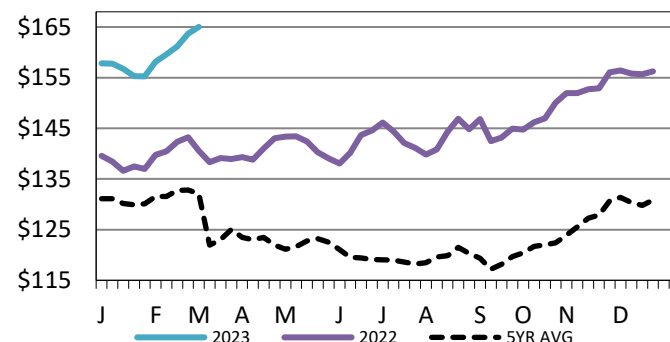
## Kansas Formula Carcass Weights

WE 3-5-23 Weight = 882 lbs



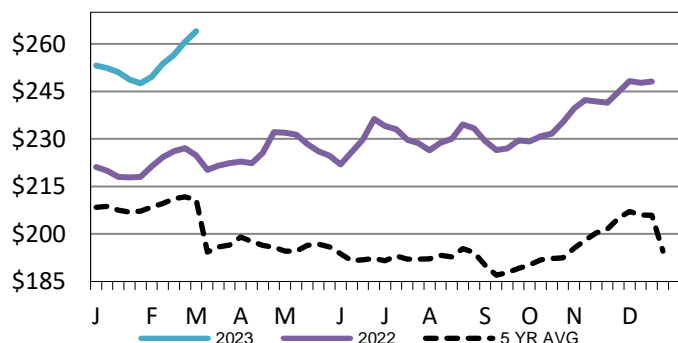
## 5-Area Live Steer Weighted Average

WE 3-5-23 Price = \$165.02



## Iowa-Minnesota Wkly Dress Steer Wtd Avg

WE 3-5-23 Price = \$264.02



## USDA Livestock, Poultry and Grain Market News

Kansas City, MO

Phone: 816-676-7000

[stjoe.lpgmn@ams.usda.gov](mailto:stjoe.lpgmn@ams.usda.gov)