

Daily Direct Steer and Heifer Slaughter Cattle Summary

For Trade on:

Thursday, March 02, 2023

LM CT100	5-AREA	LM CT109
Neg. Cash Volume:	12,128	Dressed Formula Vol: 41,028
Live Steer Avg:	\$164.95	Steer/Heifer Avg: \$264.31
Live Heifer Avg:	\$164.69	Dressed Neg. Grid Vol: 4,654
Dressed Steer Avg:	\$262.37	Steer/Heifer Avg: \$262.13
Dressed Heifer Avg:	\$262.00	TOTAL VOLUME: 57,810
LM CT106	TOTAL WK TO DATE VOLUME:	214,996
Committed:	65,318	Delivered: 72,356

LM CT118	TX-OK-NM	LM CT109
Neg. Cash Volume:	0	Dressed Formula Vol: 9,959
Live Steer Avg:	N/A	Steer/Heifer Avg: \$260.27
Live Heifer Avg:	N/A	Dressed Neg. Grid Vol: 48
Dressed Steer Avg:	N/A	Steer/Heifer Avg: \$247.59
Dressed Heifer Avg:	N/A	TOTAL VOLUME: 10,007
LM CT106	TOTAL WK TO DATE VOLUME:	54,064
Committed:	10,636	Delivered: 16,261

LM CT121	KANSAS	LM CT109
Neg. Cash Volume:	1,834	Dressed Formula Vol: 14,188
Live Steer Avg:	\$165.74	Steer/Heifer Avg: \$261.87
Live Heifer Avg:	\$164.00	Dressed Neg. Grid Vol: 928
Dressed Steer Avg:	N/A	Steer/Heifer Avg: \$259.29
Dressed Heifer Avg:	N/A	TOTAL VOLUME: 16,950
LM CT106	TOTAL WK TO DATE VOLUME:	60,997
Committed:	14,554	Delivered: 20,682

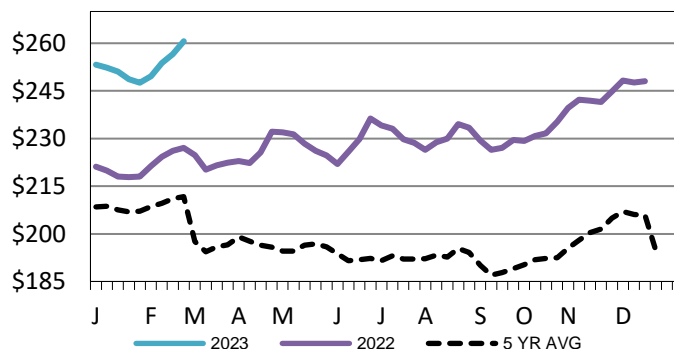
LM CT124	NEBRASKA	LM CT109
Neg. Cash Volume:	3,111	Dressed Formula Vol: 7,002
Live Steer Avg:	\$164.94	Steer/Heifer Avg: \$270.12
Live Heifer Avg:	\$164.78	Dressed Neg. Grid Vol: 2,194
Dressed Steer Avg:	\$262.63	Steer/Heifer Avg: \$262.76
Dressed Heifer Avg:	N/A	TOTAL VOLUME: 12,307
LM CT106	TOTAL WK TO DATE VOLUME:	48,841
Committed:	16,642	Delivered: 14,168

LM CT134	COLORADO	LM CT109
Neg. Cash Volume:	0	Dressed Formula Vol: 7,172
Live Steer Avg:	N/A	Steer/Heifer Avg: \$269.04
Live Heifer Avg:	N/A	Dressed Neg. Grid Vol: 308
Dressed Steer Avg:	N/A	Steer/Heifer Avg: \$263.78
Dressed Heifer Avg:	N/A	TOTAL VOLUME: 7,480
LM CT106	TOTAL WK TO DATE VOLUME:	20,551
Committed:	9,844	Delivered: 8,541

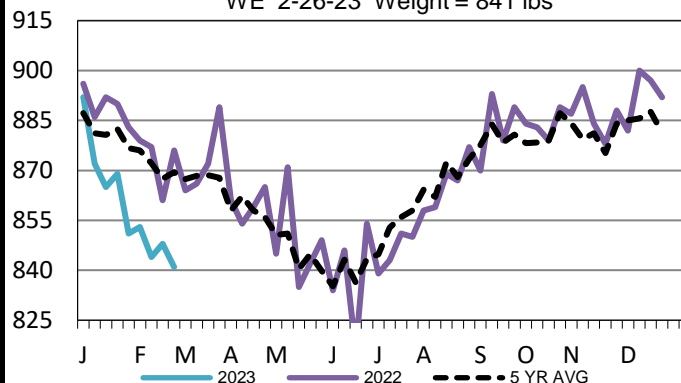
LM CT137	IA-MN	LM CT109
Neg. Cash Volume:	7,183	Dressed Formula Vol: 2,785
Live Steer Avg:	\$164.65	Steer/Heifer Avg: \$264.53
Live Heifer Avg:	\$164.84	Dressed Neg. Grid Vol: 1,249
Dressed Steer Avg:	\$262.24	Steer/Heifer Avg: \$263.23
Dressed Heifer Avg:	\$262.00	TOTAL VOLUME: 11,217
LM CT106	TOTAL WK TO DATE VOLUME:	31,365
Committed:	13,642	Delivered: 12,704

On Thursday in the Western Cornbelt negotiated cash trading was slow with light to moderate demand. Compared to the last reported live purchase market on Tuesday live traded steady to 0.50 lower from 164.00-165.00. Dressed purchases, when compared to last week, traded steady to 2.00 higher at 262.00, with a light test noted. In Kansas and Nebraska negotiated cash trading was limited on light demand. In Kansas a few live purchases traded from 164.00-166.00. In Nebraska a few live purchases traded at 165.00. However, not enough purchases for a market trend. In the Texas Panhandle negotiated cash trading was at a standstill. Last week in these regions live purchases traded at 164.00 and dressed purchases, in Nebraska, traded at 262.00.

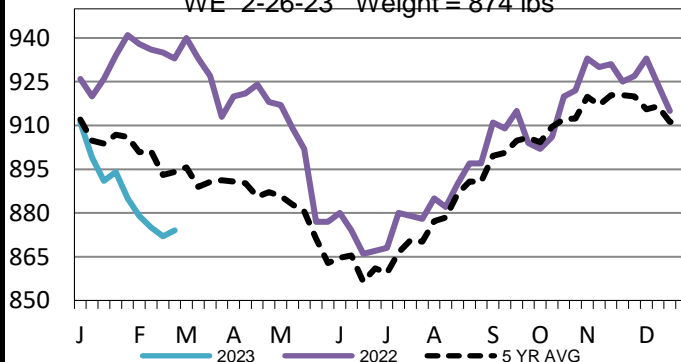
Iowa-Minnesota Wkly Dress Steer Wtd Avg
WE 2-26-23 Price = \$260.63



Colorado Formula Carcass Weights
WE 2-26-23 Weight = 841 lbs



Nebraska Formula Carcass Weights
WE 2-26-23 Weight = 874 lbs



USDA Livestock, Poultry and Grain Market News

Kansas City, MO

Phone: 816-676-7000

stjoe.lpgmn@ams.usda.gov