

# Daily Direct Steer and Heifer Slaughter Cattle Summary

For Trade on:

Wednesday, February 15, 2023

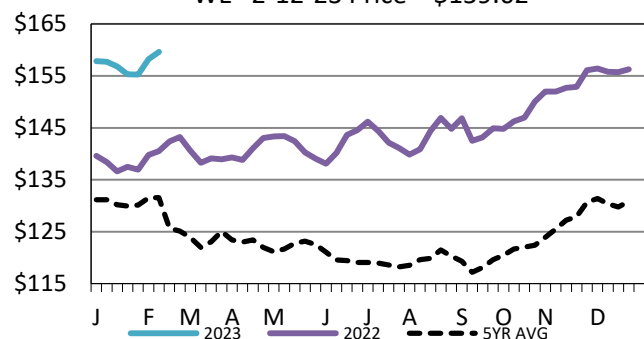
<a href="#">LM CT100</a>	<b>5-AREA</b>	<a href="#">LM CT109</a>
<b>Neg. Cash Volume:</b>	10,830	<b>Dressed Formula Vol:</b> 34,487
<b>Live Steer Avg:</b>	\$160.88	<b>Steer/Heifer Avg:</b> \$257.34
<b>Live Heifer Avg:</b>	\$159.94	<b>Dressed Neg. Grid Vol:</b> 2,621
<b>Dressed Steer Avg:</b>	\$254.09	<b>Steer/Heifer Avg:</b> \$254.27
<b>Dressed Heifer Avg:</b>	\$254.00	<b>TOTAL VOLUME:</b> 47,938
<a href="#">LM CT106</a>	<b>TOTAL WK TO DATE VOLUME:</b>	<b>148,587</b>
<b>Committed:</b>	63,181	<b>Delivered:</b> 52,153

On Wednesday negotiated cash trading in Nebraska cash trade was slow on light demand. Compared to last week early live purchases traded steady to 2.00 higher from 159.00-160.00. Not enough dressed purchase trades for a market trend. Last week dressed purchases traded at 254.00. In the Western Cornbelt negotiated cash trade was slow with moderate demand. Compared to last week early live purchases traded steady to 2.00 higher from 160.00-162.00. Not enough dressed purchase trades for a market trend. Last week dressed purchases traded at 254.00. In the Southern Plains negotiated cash trading was at a standstill. Last week in the Texas Panhandle live purchases traded at 160.00. For the previous week in Kansas live purchases traded from 160.00-161.00.

<a href="#">LM CT118</a>	<b>TX-OK-NM</b>	<a href="#">LM CT109</a>
<b>Neg. Cash Volume:</b>	0	<b>Dressed Formula Vol:</b> 10,880
<b>Live Steer Avg:</b>	N/A	<b>Steer/Heifer Avg:</b> \$253.06
<b>Live Heifer Avg:</b>	N/A	<b>Dressed Neg. Grid Vol:</b> 0
<b>Dressed Steer Avg:</b>	N/A	<b>Steer/Heifer Avg:</b> N/A
<b>Dressed Heifer Avg:</b>	N/A	<b>TOTAL VOLUME:</b> 10,880
<a href="#">LM CT106</a>	<b>TOTAL WK TO DATE VOLUME:</b>	<b>37,931</b>
<b>Committed:</b>	14,463	<b>Delivered:</b> 13,666

## 5-Area Live Steer Weighted Average

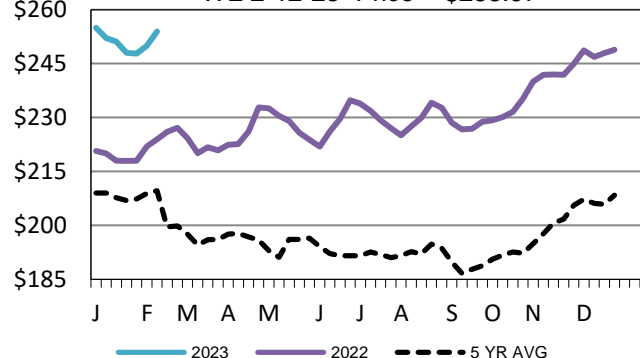
WE 2-12-23 Price = \$159.62



<a href="#">LM CT121</a>	<b>KANSAS</b>	<a href="#">LM CT109</a>
<b>Neg. Cash Volume:</b>	0	<b>Dressed Formula Vol:</b> 9,022
<b>Live Steer Avg:</b>	N/A	<b>Steer/Heifer Avg:</b> \$258.02
<b>Live Heifer Avg:</b>	N/A	<b>Dressed Neg. Grid Vol:</b> 1,011
<b>Dressed Steer Avg:</b>	N/A	<b>Steer/Heifer Avg:</b> \$252.24
<b>Dressed Heifer Avg:</b>	N/A	<b>TOTAL VOLUME:</b> 10,033
<a href="#">LM CT106</a>	<b>TOTAL WK TO DATE VOLUME:</b>	<b>43,989</b>
<b>Committed:</b>	16,744	<b>Delivered:</b> 9,536

## Nebraska Weekly DressedSteer Weighted Avg

WE 2-12-23 Price = \$253.97

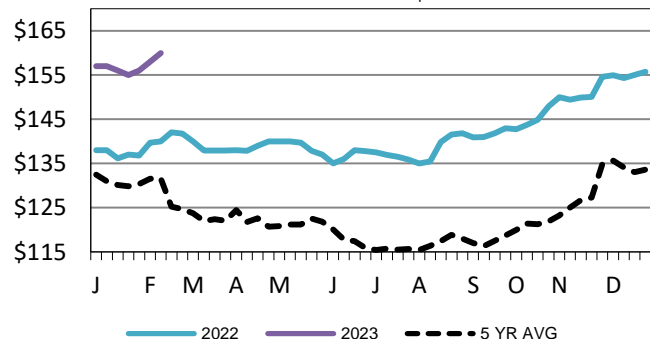


<a href="#">LM CT124</a>	<b>NEBRASKA</b>	<a href="#">LM CT109</a>
<b>Neg. Cash Volume:</b>	3,616	<b>Dressed Formula Vol:</b> 9,616
<b>Live Steer Avg:</b>	\$159.45	<b>Steer/Heifer Avg:</b> \$259.57
<b>Live Heifer Avg:</b>	\$159.15	<b>Dressed Neg. Grid Vol:</b> 1,134
<b>Dressed Steer Avg:</b>	\$256.00	<b>Steer/Heifer Avg:</b> \$251.81
<b>Dressed Heifer Avg:</b>	N/A	<b>TOTAL VOLUME:</b> 14,366
<a href="#">LM CT106</a>	<b>TOTAL WK TO DATE VOLUME:</b>	<b>33,042</b>
<b>Committed:</b>	17,137	<b>Delivered:</b> 10,756

<a href="#">LM CT134</a>	<b>COLORADO</b>	<a href="#">LM CT109</a>
<b>Neg. Cash Volume:</b>	0	<b>Dressed Formula Vol:</b> 1,787
<b>Live Steer Avg:</b>	N/A	<b>Steer/Heifer Avg:</b> \$260.96
<b>Live Heifer Avg:</b>	N/A	<b>Dressed Neg. Grid Vol:</b> 0
<b>Dressed Steer Avg:</b>	N/A	<b>Steer/Heifer Avg:</b> N/A
<b>Dressed Heifer Avg:</b>	N/A	<b>TOTAL VOLUME:</b> 1,787
<a href="#">LM CT106</a>	<b>TOTAL WK TO DATE VOLUME:</b>	<b>13,091</b>
<b>Committed:</b>	6,888	<b>Delivered:</b> 6,930

## TX-OK-NM Wkly Live Steer Wtd Avg

WE 2-12-23 Price = \$ 159.97



<a href="#">LM CT137</a>	<b>IA-MN</b>	<a href="#">LM CT109</a>
<b>Neg. Cash Volume:</b>	7,214	<b>Dressed Formula Vol:</b> 2,367
<b>Live Steer Avg:</b>	\$161.35	<b>Steer/Heifer Avg:</b> \$261.22
<b>Live Heifer Avg:</b>	\$161.17	<b>Dressed Neg. Grid Vol:</b> 547
<b>Dressed Steer Avg:</b>	\$254.00	<b>Steer/Heifer Avg:</b> \$264.94
<b>Dressed Heifer Avg:</b>	\$254.00	<b>TOTAL VOLUME:</b> 10,128
<a href="#">LM CT106</a>	<b>TOTAL WK TO DATE VOLUME:</b>	<b>20,768</b>
<b>Committed:</b>	7,949	<b>Delivered:</b> 11,265

## USDA Livestock, Poultry and Grain Market News

Kansas City, MO

Phone: 816-676-7000

[stjoe.lpgmn@ams.usda.gov](mailto:stjoe.lpgmn@ams.usda.gov)