

Daily Direct Steer and Heifer Slaughter Cattle Summary

For Trade on:

Wednesday, February 08, 2023

LM CT100	5-AREA	LM CT109
Neg. Cash Volume:	3,766	Dressed Formula Vol: 37,963
Live Steer Avg:	\$157.74	Steer/Heifer Avg: \$255.14
Live Heifer Avg:	\$157.24	Dressed Neg. Grid Vol: 4,126
Dressed Steer Avg:	\$245.00	Steer/Heifer Avg: \$255.35
Dressed Heifer Avg:	\$248.00	TOTAL VOLUME: 45,855
LM CT106	TOTAL WK TO DATE VOLUME:	141,981
Committed:	64,209	Delivered: 72,873

LM CT118	TX-OK-NM	LM CT109
Neg. Cash Volume:	418	Dressed Formula Vol: 12,921
Live Steer Avg:	\$159.00	Steer/Heifer Avg: \$252.53
Live Heifer Avg:	\$158.00	Dressed Neg. Grid Vol: 0
Dressed Steer Avg:	N/A	Steer/Heifer Avg: N/A
Dressed Heifer Avg:	N/A	TOTAL VOLUME: 13,339
LM CT106	TOTAL WK TO DATE VOLUME:	38,033
Committed:	17,206	Delivered: 16,347

LM CT121	KANSAS	LM CT109
Neg. Cash Volume:	0	Dressed Formula Vol: 12,487
Live Steer Avg:	N/A	Steer/Heifer Avg: \$254.79
Live Heifer Avg:	N/A	Dressed Neg. Grid Vol: 383
Dressed Steer Avg:	N/A	Steer/Heifer Avg: \$251.41
Dressed Heifer Avg:	N/A	TOTAL VOLUME: 12,870
LM CT106	TOTAL WK TO DATE VOLUME:	45,986
Committed:	13,553	Delivered: 19,898

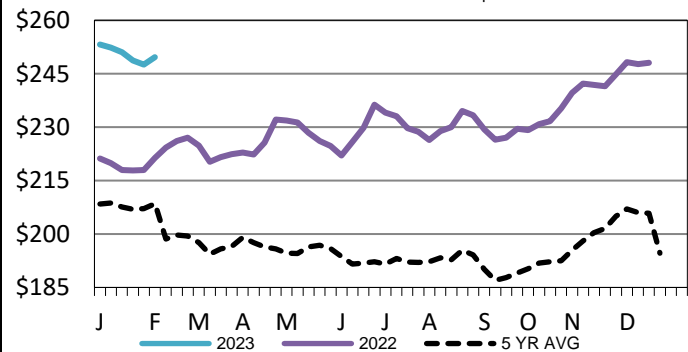
LM CT124	NEBRASKA	LM CT109
Neg. Cash Volume:	1,961	Dressed Formula Vol: 8,888
Live Steer Avg:	\$157.00	Steer/Heifer Avg: \$259.40
Live Heifer Avg:	\$157.00	Dressed Neg. Grid Vol: 2,940
Dressed Steer Avg:	N/A	Steer/Heifer Avg: \$255.42
Dressed Heifer Avg:	N/A	TOTAL VOLUME: 13,789
LM CT106	TOTAL WK TO DATE VOLUME:	31,965
Committed:	18,441	Delivered: 20,306

LM CT134	COLORADO	LM CT109
Neg. Cash Volume:	0	Dressed Formula Vol: 1,814
Live Steer Avg:	N/A	Steer/Heifer Avg: \$254.39
Live Heifer Avg:	N/A	Dressed Neg. Grid Vol: 319
Dressed Steer Avg:	N/A	Steer/Heifer Avg: \$252.38
Dressed Heifer Avg:	N/A	TOTAL VOLUME: 2,133
LM CT106	TOTAL WK TO DATE VOLUME:	13,572
Committed:	8,044	Delivered: 6,814

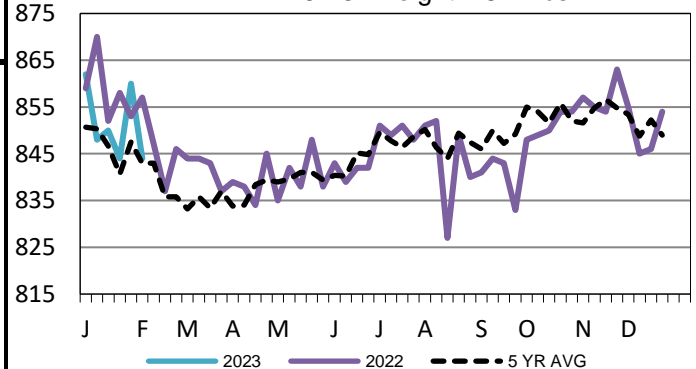
LM CT137	IA-MN	LM CT109
Neg. Cash Volume:	1,387	Dressed Formula Vol: 1,907
Live Steer Avg:	\$158.00	Steer/Heifer Avg: \$256.37
Live Heifer Avg:	\$158.00	Dressed Neg. Grid Vol: 560
Dressed Steer Avg:	\$245.00	Steer/Heifer Avg: \$259.54
Dressed Heifer Avg:	\$248.00	TOTAL VOLUME: 3,854
LM CT106	TOTAL WK TO DATE VOLUME:	9,823
Committed:	6,965	Delivered: 9,508

On Wednesday in Nebraska and the Western Cornbelt negotiated cash traded was limited on light demand. In Nebraska few live purchases traded at 157.00. In Texas Panhandle negotiated cash trade was mostly inactive on very light demand. In Kansas negotiated cash trade was at a standstill. Not enough purchases in any of these regions for a market trend. The latest established market was last week in these regions. In the Texas Panhandle live purchases traded at 158.00. In Kansas live purchases traded from 158.00-159.00. In Nebraska live and dressed purchases traded from 155.00-159.00 and at 250.00, respectively. In the Western Cornbelt live and dressed purchases traded from 154.00-160.00 and at 250.00, respectively.

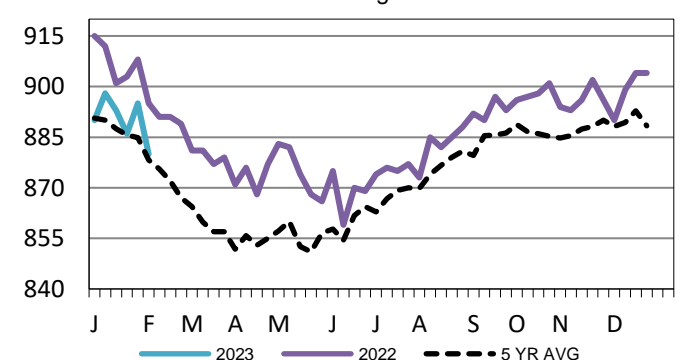
Iowa-Minnesota Wkly Dress Steer Wtd Avg
WE 2-5-23 Price = \$249.61



TX-OK-NM Formula Carcass Weights
WE 2-5-23 Weight = 844 lbs



Kansas Formula Carcass Weights
WE 2-5-23 Weight = 880 lbs



USDA Livestock, Poultry and Grain Market News

St. Joseph, Missouri

Phone: 816-676-7000

stjoe.lpgmn@ams.usda.gov