

Daily Direct Steer and Heifer Slaughter Cattle Summary

For Trade on:

Thursday, February 02, 2023

LM CT100	5-AREA	LM CT109
Neg. Cash Volume:	3,080	Dressed Formula Vol: 49,005
Live Steer Avg:	\$154.39	Steer/Heifer Avg: \$253.29
Live Heifer Avg:	\$154.96	Dressed Neg. Grid Vol: 4,571
Dressed Steer Avg:	\$248.00	Steer/Heifer Avg: \$253.45
Dressed Heifer Avg:	\$248.00	TOTAL VOLUME: 56,656
LM CT106	TOTAL WK TO DATE VOLUME:	197,280
Committed:	42,722	Delivered: 69,889

LM CT118	TX-OK-NM	LM CT109
Neg. Cash Volume:	0	Dressed Formula Vol: 10,290
Live Steer Avg:	N/A	Steer/Heifer Avg: \$249.74
Live Heifer Avg:	N/A	Dressed Neg. Grid Vol: 0
Dressed Steer Avg:	N/A	Steer/Heifer Avg: N/A
Dressed Heifer Avg:	N/A	TOTAL VOLUME: 10,290
LM CT106	TOTAL WK TO DATE VOLUME:	44,303
Committed:	5,245	Delivered: 17,950

LM CT121	KANSAS	LM CT109
Neg. Cash Volume:	90	Dressed Formula Vol: 13,274
Live Steer Avg:	N/A	Steer/Heifer Avg: \$252.59
Live Heifer Avg:	N/A	Dressed Neg. Grid Vol: 1,130
Dressed Steer Avg:	N/A	Steer/Heifer Avg: \$249.50
Dressed Heifer Avg:	N/A	TOTAL VOLUME: 14,494
LM CT106	TOTAL WK TO DATE VOLUME:	58,977
Committed:	14,715	Delivered: 15,332

LM CT124	NEBRASKA	LM CT109
Neg. Cash Volume:	497	Dressed Formula Vol: 15,639
Live Steer Avg:	N/A	Steer/Heifer Avg: \$255.90
Live Heifer Avg:	N/A	Dressed Neg. Grid Vol: 2,048
Dressed Steer Avg:	N/A	Steer/Heifer Avg: \$254.06
Dressed Heifer Avg:	\$248.00	TOTAL VOLUME: 18,184
LM CT106	TOTAL WK TO DATE VOLUME:	51,959
Committed:	17,447	Delivered: 18,566

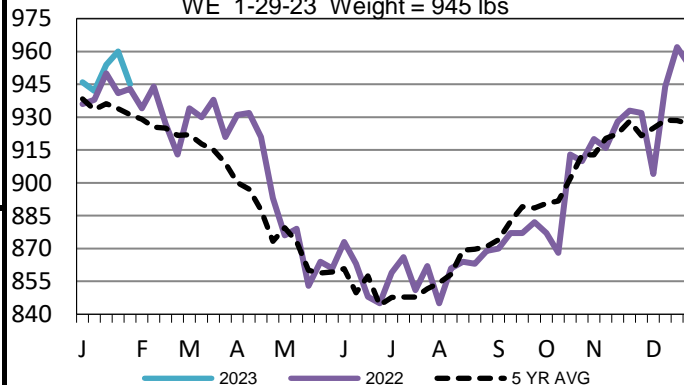
LM CT134	COLORADO	LM CT109
Neg. Cash Volume:	0	Dressed Formula Vol: 7,083
Live Steer Avg:	N/A	Steer/Heifer Avg: \$255.07
Live Heifer Avg:	N/A	Dressed Neg. Grid Vol: 81
Dressed Steer Avg:	N/A	Steer/Heifer Avg: \$256.40
Dressed Heifer Avg:	N/A	TOTAL VOLUME: 7,164
LM CT106	TOTAL WK TO DATE VOLUME:	23,051
Committed:	1,916	Delivered: 8,629

LM CT137	IA-MN	LM CT109
Neg. Cash Volume:	2,493	Dressed Formula Vol: 2,870
Live Steer Avg:	\$154.39	Steer/Heifer Avg: \$250.96
Live Heifer Avg:	\$154.96	Dressed Neg. Grid Vol: 1,312
Dressed Steer Avg:	\$248.00	Steer/Heifer Avg: \$255.73
Dressed Heifer Avg:	\$248.00	TOTAL VOLUME: 6,675
LM CT106	TOTAL WK TO DATE VOLUME:	19,978
Committed:	3,399	Delivered: 9,412

On Thursday in the Western Cornbelt negotiated cash trade was limited on light demand. A few live purchases traded at 154.00. In Kansas and Nebraska negotiated cash trade was mostly inactive with very light demand. However, not enough purchases in these regions for a full market trend. In the Texas Panhandle negotiated cash trade was at a standstill. Last week in the Southern Plains live purchases traded at 156.00. In Nebraska last week, live and dressed purchases traded from 153.00-156.00 and at 248.00, respectively. Last week in the Western Cornbelt live and dressed purchases traded from 152.00-157.00 and at 248.00, respectively.

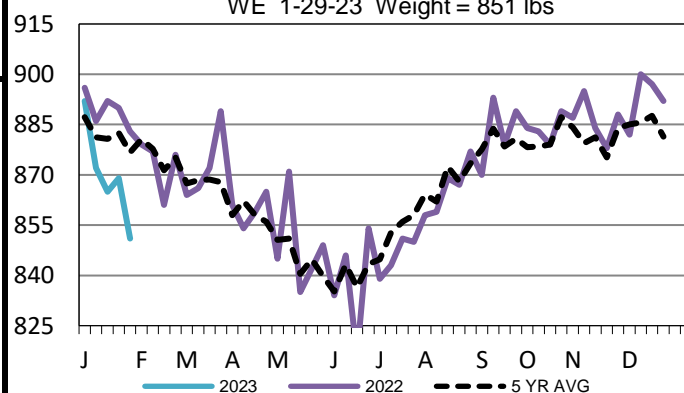
Iowa-Minnesota Formula Carcass Weights

WE 1-29-23 Weight = 945 lbs



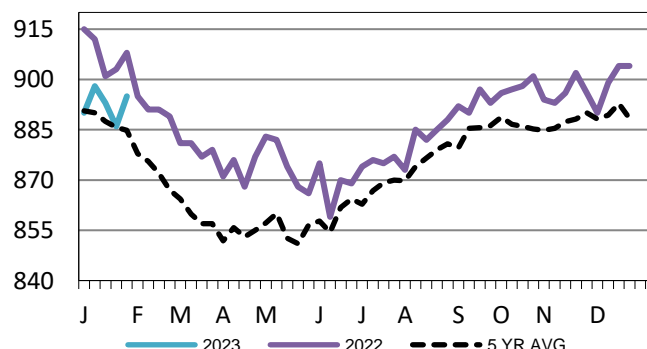
Colorado Formula Carcass Weights

WE 1-29-23 Weight = 851 lbs



Kansas Formula Carcass Weights

WE 1-29-23 Weight = 895 lbs



USDA Livestock, Poultry and Grain Market News

St. Joseph, Missouri

Phone: 816-676-7000

stjoe.lpgmn@ams.usda.gov