

## Daily Direct Steer and Heifer Slaughter Cattle Summary

For Trade on:

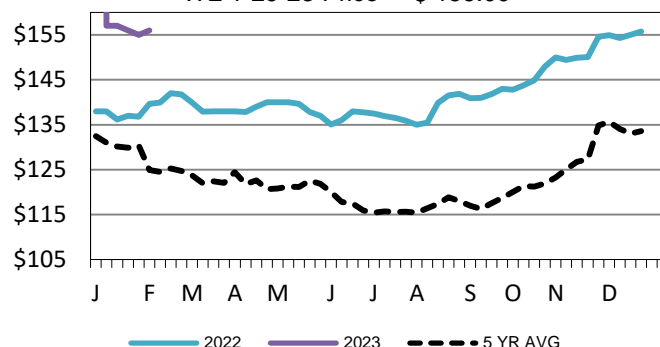
Monday, January 30, 2023

<a href="#">LM CT100</a>	<b>5-AREA</b>	<a href="#">LM CT109</a>
<b>Neg. Cash Volume:</b>	103	<b>Dressed Formula Vol:</b> 46,376
<b>Live Steer Avg:</b>	N/A	<b>Steer/Heifer Avg:</b> \$251.01
<b>Live Heifer Avg:</b>	N/A	<b>Dressed Neg. Grid Vol:</b> 4,734
<b>Dressed Steer Avg:</b>	N/A	<b>Steer/Heifer Avg:</b> \$255.60
<b>Dressed Heifer Avg:</b>	N/A	<b>TOTAL VOLUME:</b> 51,213
<a href="#">LM CT106</a>	<b>TOTAL WK TO DATE VOLUME:</b>	<b>51,213</b>
<b>Committed:</b>	<b>74,900</b>	<b>Delivered:</b> 82,981

On Monday negotiated cash trade was at a standstill in the Southern Plains and Nebraska. In the Western Cornbelt negotiated cash trade was mostly inactive with very light demand. Not enough purchases for a market trend. Last week in the Southern Plains live purchases traded at 156.00. In Nebraska last week, live and dressed purchases traded from 153.00-156.00 and at 248.00, respectively. Last week in the Western Cornbelt live and dressed purchases traded from 152.00-157.00 and at 248.00, respectively.

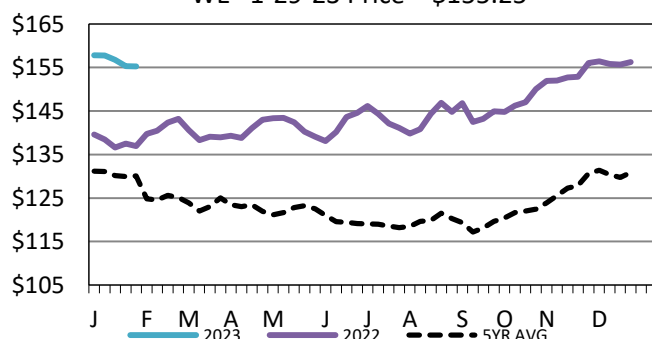
<a href="#">LM CT118</a>	<b>TX-OK-NM</b>	<a href="#">LM CT109</a>
<b>Neg. Cash Volume:</b>	0	<b>Dressed Formula Vol:</b> 13,522
<b>Live Steer Avg:</b>	N/A	<b>Steer/Heifer Avg:</b> \$249.21
<b>Live Heifer Avg:</b>	N/A	<b>Dressed Neg. Grid Vol:</b> 0
<b>Dressed Steer Avg:</b>	N/A	<b>Steer/Heifer Avg:</b> N/A
<b>Dressed Heifer Avg:</b>	N/A	<b>TOTAL VOLUME:</b> 13,522
<a href="#">LM CT106</a>	<b>TOTAL WK TO DATE VOLUME:</b>	<b>13,522</b>
<b>Committed:</b>	<b>31,350</b>	<b>Delivered:</b> 17,141

**TX-OK-NM Wkly Live Steer Wtd Avg**  
WE 1-29-23 Price = \$ 156.00



<a href="#">LM CT121</a>	<b>KANSAS</b>	<a href="#">LM CT109</a>
<b>Neg. Cash Volume:</b>	0	<b>Dressed Formula Vol:</b> 14,577
<b>Live Steer Avg:</b>	N/A	<b>Steer/Heifer Avg:</b> \$250.37
<b>Live Heifer Avg:</b>	N/A	<b>Dressed Neg. Grid Vol:</b> 2,046
<b>Dressed Steer Avg:</b>	N/A	<b>Steer/Heifer Avg:</b> \$251.93
<b>Dressed Heifer Avg:</b>	N/A	<b>TOTAL VOLUME:</b> 16,623
<a href="#">LM CT106</a>	<b>TOTAL WK TO DATE VOLUME:</b>	<b>16,623</b>
<b>Committed:</b>	<b>17,873</b>	<b>Delivered:</b> 23,422

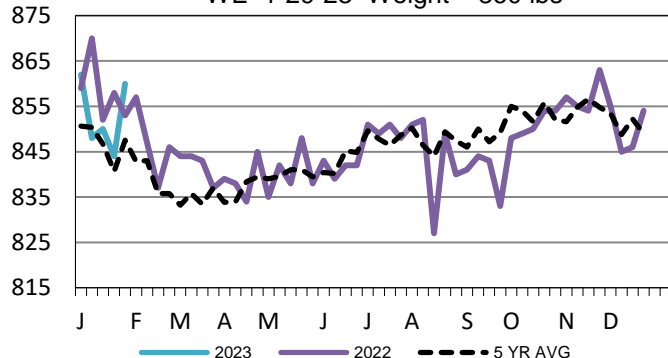
**5-Area Live Steer Weighted Average**  
WE 1-29-23 Price = \$155.25



<a href="#">LM CT124</a>	<b>NEBRASKA</b>	<a href="#">LM CT109</a>
<b>Neg. Cash Volume:</b>	0	<b>Dressed Formula Vol:</b> 11,322
<b>Live Steer Avg:</b>	N/A	<b>Steer/Heifer Avg:</b> \$253.72
<b>Live Heifer Avg:</b>	N/A	<b>Dressed Neg. Grid Vol:</b> 1,803
<b>Dressed Steer Avg:</b>	N/A	<b>Steer/Heifer Avg:</b> \$257.86
<b>Dressed Heifer Avg:</b>	N/A	<b>TOTAL VOLUME:</b> 13,125
<a href="#">LM CT106</a>	<b>TOTAL WK TO DATE VOLUME:</b>	<b>13,125</b>
<b>Committed:</b>	<b>13,021</b>	<b>Delivered:</b> 17,397

<a href="#">LM CT134</a>	<b>COLORADO</b>	<a href="#">LM CT109</a>
<b>Neg. Cash Volume:</b>	0	<b>Dressed Formula Vol:</b> 3,724
<b>Live Steer Avg:</b>	N/A	<b>Steer/Heifer Avg:</b> \$249.96
<b>Live Heifer Avg:</b>	N/A	<b>Dressed Neg. Grid Vol:</b> 77
<b>Dressed Steer Avg:</b>	N/A	<b>Steer/Heifer Avg:</b> \$250.66
<b>Dressed Heifer Avg:</b>	N/A	<b>TOTAL VOLUME:</b> 3,801
<a href="#">LM CT106</a>	<b>TOTAL WK TO DATE VOLUME:</b>	<b>3,801</b>
<b>Committed:</b>	<b>4,827</b>	<b>Delivered:</b> 6,541

**TX-OK-NM Formula Carcass Weights**  
WE 1-29-23 Weight = 860 lbs



<a href="#">LM CT137</a>	<b>IA-MN</b>	<a href="#">LM CT109</a>
<b>Neg. Cash Volume:</b>	103	<b>Dressed Formula Vol:</b> 3,353
<b>Live Steer Avg:</b>	N/A	<b>Steer/Heifer Avg:</b> \$253.12
<b>Live Heifer Avg:</b>	N/A	<b>Dressed Neg. Grid Vol:</b> 991
<b>Dressed Steer Avg:</b>	N/A	<b>Steer/Heifer Avg:</b> \$260.61
<b>Dressed Heifer Avg:</b>	N/A	<b>TOTAL VOLUME:</b> 4,447
<a href="#">LM CT106</a>	<b>TOTAL WK TO DATE VOLUME:</b>	<b>4,447</b>
<b>Committed:</b>	<b>7,829</b>	<b>Delivered:</b> 18,480

## USDA Livestock, Poultry and Grain Market News

St. Joseph, Missouri

Phone: 816-676-7000

[stjoe.lpgmn@ams.usda.gov](mailto:stjoe.lpgmn@ams.usda.gov)