

## Daily Direct Steer and Heifer Slaughter Cattle Summary

For Trade on:

Tuesday, January 24, 2023

<a href="#">LM CT100</a>	<b>5-AREA</b>	<a href="#">LM CT109</a>
<b>Neg. Cash Volume:</b>	337	<b>Dressed Formula Vol:</b> 44,150
<b>Live Steer Avg:</b>	\$155.00	<b>Steer/Heifer Avg:</b> \$256.16
<b>Live Heifer Avg:</b>	N/A	<b>Dressed Neg. Grid Vol:</b> 3,617
<b>Dressed Steer Avg:</b>	N/A	<b>Steer/Heifer Avg:</b> \$257.72
<b>Dressed Heifer Avg:</b>	N/A	<b>TOTAL VOLUME:</b> 48,104
<a href="#">LM CT106</a>	<b>TOTAL WK TO DATE VOLUME:</b> 96,355	
<b>Committed:</b>	64,214	<b>Delivered:</b> 72,738

<a href="#">LM CT118</a>	<b>TX-OK-NM</b>	<a href="#">LM CT109</a>
<b>Neg. Cash Volume:</b>	0	<b>Dressed Formula Vol:</b> 14,257
<b>Live Steer Avg:</b>	N/A	<b>Steer/Heifer Avg:</b> \$252.70
<b>Live Heifer Avg:</b>	N/A	<b>Dressed Neg. Grid Vol:</b> 45
<b>Dressed Steer Avg:</b>	N/A	<b>Steer/Heifer Avg:</b> \$244.02
<b>Dressed Heifer Avg:</b>	N/A	<b>TOTAL VOLUME:</b> 14,302
<a href="#">LM CT106</a>	<b>TOTAL WK TO DATE VOLUME:</b> 26,342	
<b>Committed:</b>	23,694	<b>Delivered:</b> 15,124

<a href="#">LM CT121</a>	<b>KANSAS</b>	<a href="#">LM CT109</a>
<b>Neg. Cash Volume:</b>	0	<b>Dressed Formula Vol:</b> 13,341
<b>Live Steer Avg:</b>	N/A	<b>Steer/Heifer Avg:</b> \$254.62
<b>Live Heifer Avg:</b>	N/A	<b>Dressed Neg. Grid Vol:</b> 0
<b>Dressed Steer Avg:</b>	N/A	<b>Steer/Heifer Avg:</b> N/A
<b>Dressed Heifer Avg:</b>	N/A	<b>TOTAL VOLUME:</b> 13,341
<a href="#">LM CT106</a>	<b>TOTAL WK TO DATE VOLUME:</b> 33,719	
<b>Committed:</b>	23,279	<b>Delivered:</b> 22,510

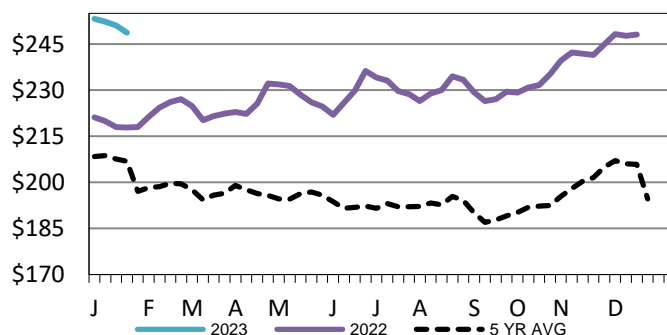
<a href="#">LM CT124</a>	<b>NEBRASKA</b>	<a href="#">LM CT109</a>
<b>Neg. Cash Volume:</b>	0	<b>Dressed Formula Vol:</b> 5,935
<b>Live Steer Avg:</b>	N/A	<b>Steer/Heifer Avg:</b> \$263.84
<b>Live Heifer Avg:</b>	N/A	<b>Dressed Neg. Grid Vol:</b> 1,899
<b>Dressed Steer Avg:</b>	N/A	<b>Steer/Heifer Avg:</b> \$257.77
<b>Dressed Heifer Avg:</b>	N/A	<b>TOTAL VOLUME:</b> 7,834
<a href="#">LM CT106</a>	<b>TOTAL WK TO DATE VOLUME:</b> 17,179	
<b>Committed:</b>	9,596	<b>Delivered:</b> 20,453

<a href="#">LM CT134</a>	<b>COLORADO</b>	<a href="#">LM CT109</a>
<b>Neg. Cash Volume:</b>	0	<b>Dressed Formula Vol:</b> 7,672
<b>Live Steer Avg:</b>	N/A	<b>Steer/Heifer Avg:</b> \$260.71
<b>Live Heifer Avg:</b>	N/A	<b>Dressed Neg. Grid Vol:</b> 574
<b>Dressed Steer Avg:</b>	N/A	<b>Steer/Heifer Avg:</b> \$251.93
<b>Dressed Heifer Avg:</b>	N/A	<b>TOTAL VOLUME:</b> 8,246
<a href="#">LM CT106</a>	<b>TOTAL WK TO DATE VOLUME:</b> 12,522	
<b>Committed:</b>	2,799	<b>Delivered:</b> 6,875

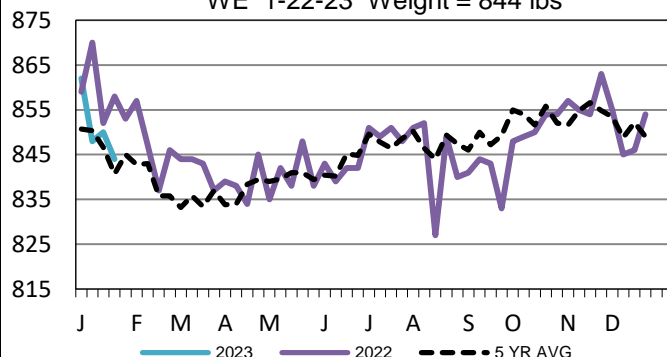
<a href="#">LM CT137</a>	<b>IA-MN</b>	<a href="#">LM CT109</a>
<b>Neg. Cash Volume:</b>	337	<b>Dressed Formula Vol:</b> 3,250
<b>Live Steer Avg:</b>	\$155.00	<b>Steer/Heifer Avg:</b> \$253.74
<b>Live Heifer Avg:</b>	N/A	<b>Dressed Neg. Grid Vol:</b> 1,182
<b>Dressed Steer Avg:</b>	N/A	<b>Steer/Heifer Avg:</b> \$261.12
<b>Dressed Heifer Avg:</b>	N/A	<b>TOTAL VOLUME:</b> 4,769
<a href="#">LM CT106</a>	<b>TOTAL WK TO DATE VOLUME:</b> 7,141	
<b>Committed:</b>	4,846	<b>Delivered:</b> 7,776

On Tuesday negotiated cash trading was at a standstill in the Southern Plains and Nebraska. In the Western Cornbelt negotiated cash trading was mostly inactive on very light demand. Not enough purchases for a market trend. Last week in the Southern Plains and Nebraska live purchases traded at 155.00 and dressed purchases, in Nebraska, traded at 248.00. For the prior week in the Western Cornbelt live and dressed purchases traded from 156.00-158.00 and from 248.00-250.00, respectively.

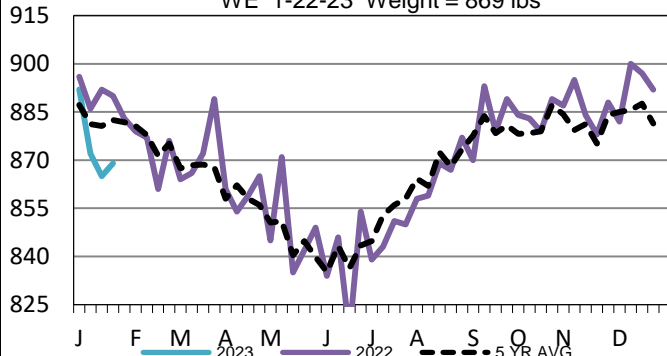
**Iowa-Minnesota Wkly Dress Steer Wtd Avg**  
WE 1-22-23 Price = \$248.71



**TX-OK-NM Formula Carcass Weights**  
WE 1-22-23 Weight = 844 lbs



**Colorado Formula Carcass Weights**  
WE 1-22-23 Weight = 869 lbs



## USDA Livestock, Poultry and Grain Market News

St. Joseph, Missouri

Phone: 816-676-7000

[stjoe.lpgmn@ams.usda.gov](mailto:stjoe.lpgmn@ams.usda.gov)