

Daily Direct Steer and Heifer Slaughter Cattle Summary

For Trade on:

Tuesday, January 17, 2023

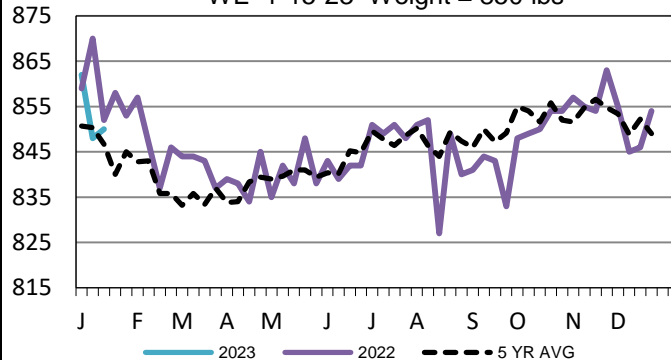
LM CT100	5-AREA	LM CT109
Neg. Cash Volume:	154	Dressed Formula Vol: 48,702
Live Steer Avg:	\$157.00	Steer/Heifer Avg: \$257.54
Live Heifer Avg:	N/A	Dressed Neg. Grid Vol: 5,596
Dressed Steer Avg:	N/A	Steer/Heifer Avg: \$258.76
Dressed Heifer Avg:	N/A	TOTAL VOLUME: 54,452
LM CT106	TOTAL WK TO DATE VOLUME:	102,272
Committed:	62,556	Delivered: 87,019

On Tuesday negotiated cash trading was at a standstill in the Southern Plains and Nebraska. In the Western Cornbelt negotiated cash trade was mostly inactive with very light demand. Not enough purchases for a market trend. The latest established market was last week in these regions. In the Southern Plains live purchases traded at 156.00. In Nebraska live and dressed purchases traded from 156.00- 157.00 and from 250.00-252.00, respectively. In the Western Cornbelt live and dressed purchases traded at 158.00 and from 250.00- 252.00, respectively.

LM CT118	TX-OK-NM	LM CT109
Neg. Cash Volume:	0	Dressed Formula Vol: 16,574
Live Steer Avg:	N/A	Steer/Heifer Avg: \$255.69
Live Heifer Avg:	N/A	Dressed Neg. Grid Vol: 0
Dressed Steer Avg:	N/A	Steer/Heifer Avg: N/A
Dressed Heifer Avg:	N/A	TOTAL VOLUME: 16,574
LM CT106	TOTAL WK TO DATE VOLUME:	31,050
Committed:	15,247	Delivered: 15,484

TX-OK-NM Formula Carcass Weights

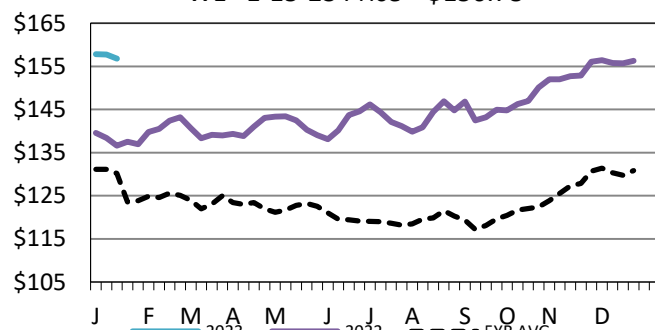
WE 1-15-23 Weight = 850 lbs



LM CT121	KANSAS	LM CT109
Neg. Cash Volume:	0	Dressed Formula Vol: 13,742
Live Steer Avg:	N/A	Steer/Heifer Avg: \$256.36
Live Heifer Avg:	N/A	Dressed Neg. Grid Vol: 713
Dressed Steer Avg:	N/A	Steer/Heifer Avg: \$252.98
Dressed Heifer Avg:	N/A	TOTAL VOLUME: 14,455
LM CT106	TOTAL WK TO DATE VOLUME:	30,580
Committed:	22,565	Delivered: 21,329

5-Area Live Steer Weighted Average

WE 1-15-23 Price = \$156.78

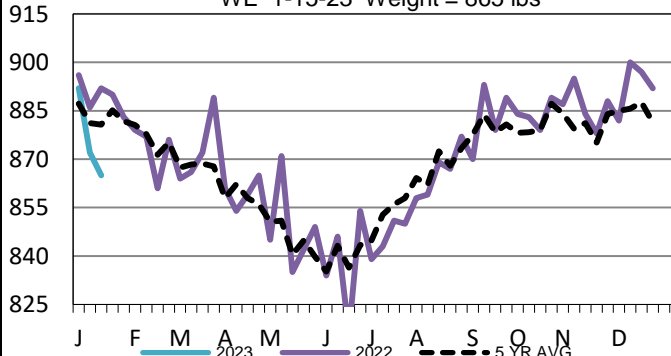


LM CT124	NEBRASKA	LM CT109
Neg. Cash Volume:	0	Dressed Formula Vol: 7,545
Live Steer Avg:	N/A	Steer/Heifer Avg: \$258.55
Live Heifer Avg:	N/A	Dressed Neg. Grid Vol: 3,300
Dressed Steer Avg:	N/A	Steer/Heifer Avg: \$257.21
Dressed Heifer Avg:	N/A	TOTAL VOLUME: 10,845
LM CT106	TOTAL WK TO DATE VOLUME:	20,073
Committed:	10,187	Delivered: 20,451

LM CT134	COLORADO	LM CT109
Neg. Cash Volume:	0	Dressed Formula Vol: 8,542
Live Steer Avg:	N/A	Steer/Heifer Avg: \$261.89
Live Heifer Avg:	N/A	Dressed Neg. Grid Vol: 755
Dressed Steer Avg:	N/A	Steer/Heifer Avg: \$255.02
Dressed Heifer Avg:	N/A	TOTAL VOLUME: 9,297
LM CT106	TOTAL WK TO DATE VOLUME:	13,581
Committed:	10,187	Delivered: 20,451

Colorado Formula Carcass Weights

WE 1-15-23 Weight = 865 lbs



LM CT137	IA-MN	LM CT109
Neg. Cash Volume:	154	Dressed Formula Vol: 2,779
Live Steer Avg:	\$157.00	Steer/Heifer Avg: \$260.35
Live Heifer Avg:	N/A	Dressed Neg. Grid Vol: 1,581
Dressed Steer Avg:	N/A	Steer/Heifer Avg: \$263.83
Dressed Heifer Avg:	N/A	TOTAL VOLUME: 4,514
LM CT106	TOTAL WK TO DATE VOLUME:	7,813
Committed:	4,370	Delivered: 9,304

USDA Livestock, Poultry and Grain Market News

St. Joseph, Missouri

Phone: 816-676-7000

stjoe.lpgmn@ams.usda.gov