

## Daily Direct Steer and Heifer Slaughter Cattle Summary

For Trade on:

Monday, January 16, 2023

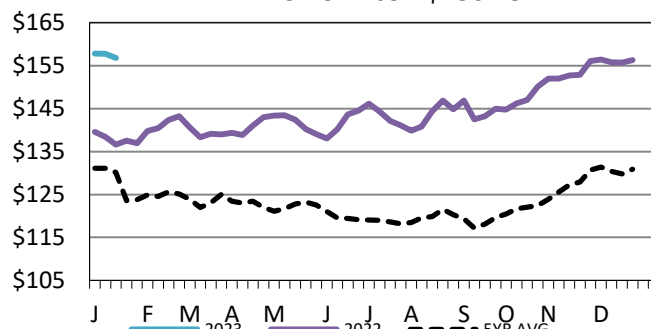
<a href="#">LM CT100</a>	<b>5-AREA</b>	<a href="#">LM CT109</a>
Neg. Cash Volume:	128	Dressed Formula Vol: 43,800
Live Steer Avg:	N/A	Steer/Heifer Avg: \$253.33
Live Heifer Avg:	N/A	Dressed Neg. Grid Vol: 3,892
Dressed Steer Avg:	N/A	Steer/Heifer Avg: \$255.44
Dressed Heifer Avg:	N/A	<b>TOTAL VOLUME: 47,820</b>
<a href="#">LM CT106</a>	<b>TOTAL WK TO DATE VOLUME:</b>	<b>47,820</b>
Committed:	<b>39,048</b>	Delivered: <b>76,309</b>

On Monday negotiated cash trading was at a standstill in the Southern Plains and Nebraska. In the Western Cornbelt negotiated cash trade was mostly inactive with very light demand. Not enough purchases for a market trend. The latest established market was last week in these regions. In the Southern Plains live purchases traded at 156.00. In Nebraska live and dressed purchases traded from 156.00- 157.00 and from 250.00-252.00, respectively. In the Western Cornbelt live and dressed purchases traded at 158.00 and from 250.00- 252.00, respectively.

<a href="#">LM CT118</a>	<b>TX-OK-NM</b>	<a href="#">LM CT109</a>
Neg. Cash Volume:	0	Dressed Formula Vol: 14,476
Live Steer Avg:	N/A	Steer/Heifer Avg: \$251.24
Live Heifer Avg:	N/A	Dressed Neg. Grid Vol: 0
Dressed Steer Avg:	N/A	Steer/Heifer Avg: N/A
Dressed Heifer Avg:	N/A	<b>TOTAL VOLUME: 14,476</b>
<a href="#">LM CT106</a>	<b>TOTAL WK TO DATE VOLUME:</b>	<b>14,476</b>
Committed:	<b>6,319</b>	Delivered: <b>16,436</b>

## 5-Area Live Steer Weighted Average

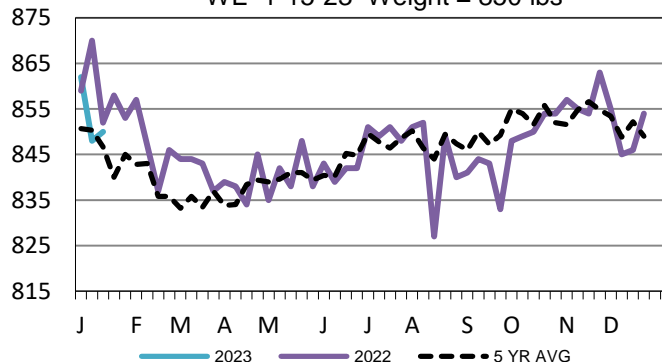
WE 1-15-23 Price = \$156.78



<a href="#">LM CT121</a>	<b>KANSAS</b>	<a href="#">LM CT109</a>
Neg. Cash Volume:	0	Dressed Formula Vol: 16,125
Live Steer Avg:	N/A	Steer/Heifer Avg: \$253.16
Live Heifer Avg:	N/A	Dressed Neg. Grid Vol: 713
Dressed Steer Avg:	N/A	Steer/Heifer Avg: \$252.98
Dressed Heifer Avg:	N/A	<b>TOTAL VOLUME: 16,838</b>
<a href="#">LM CT106</a>	<b>TOTAL WK TO DATE VOLUME:</b>	<b>16,838</b>
Committed:	<b>9,814</b>	Delivered: <b>20,216</b>

## TX-OK-NM Formula Carcass Weights

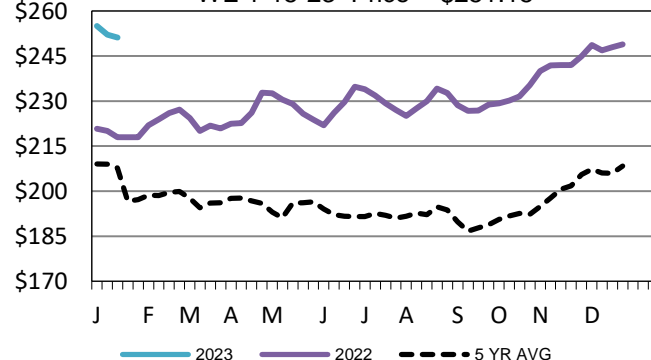
WE 1-15-23 Weight = 850 lbs



<a href="#">LM CT124</a>	<b>NEBRASKA</b>	<a href="#">LM CT109</a>
Neg. Cash Volume:	0	Dressed Formula Vol: 6,744
Live Steer Avg:	N/A	Steer/Heifer Avg: \$256.79
Live Heifer Avg:	N/A	Dressed Neg. Grid Vol: 2,484
Dressed Steer Avg:	N/A	Steer/Heifer Avg: \$255.00
Dressed Heifer Avg:	N/A	<b>TOTAL VOLUME: 9,228</b>
<a href="#">LM CT106</a>	<b>TOTAL WK TO DATE VOLUME:</b>	<b>9,228</b>
Committed:	<b>11,262</b>	Delivered: <b>21,143</b>

## Nebraska Weekly Dressed Steer Weighted Avg

WE 1-15-23 Price = \$251.15



<a href="#">LM CT134</a>	<b>COLORADO</b>	<a href="#">LM CT109</a>
Neg. Cash Volume:	0	Dressed Formula Vol: 4,137
Live Steer Avg:	N/A	Steer/Heifer Avg: \$255.02
Live Heifer Avg:	N/A	Dressed Neg. Grid Vol: 147
Dressed Steer Avg:	N/A	Steer/Heifer Avg: \$256.37
Dressed Heifer Avg:	N/A	<b>TOTAL VOLUME: 4,284</b>
<a href="#">LM CT106</a>	<b>TOTAL WK TO DATE VOLUME:</b>	<b>4,284</b>
Committed:	<b>4,694</b>	Delivered: <b>9,942</b>

<a href="#">LM CT137</a>	<b>IA-MN</b>	<a href="#">LM CT109</a>
Neg. Cash Volume:	128	Dressed Formula Vol: 2,503
Live Steer Avg:	N/A	Steer/Heifer Avg: \$254.97
Live Heifer Avg:	N/A	Dressed Neg. Grid Vol: 668
Dressed Steer Avg:	N/A	Steer/Heifer Avg: \$261.50
Dressed Heifer Avg:	N/A	<b>TOTAL VOLUME: 3,299</b>
<a href="#">LM CT106</a>	<b>TOTAL WK TO DATE VOLUME:</b>	<b>3,299</b>
Committed:	<b>6,959</b>	Delivered: <b>8,572</b>

## USDA Livestock, Poultry and Grain Market News

St. Joseph, Missouri

Phone: 816-676-7000

[stjoe.lpgmn@ams.usda.gov](mailto:stjoe.lpgmn@ams.usda.gov)