

Daily Direct Steer and Heifer Slaughter Cattle Summary

For Trade on:

Tuesday, January 10, 2023

LM CT100	5-AREA	LM CT109
Neg. Cash Volume:	574	Dressed Formula Vol: 47,712
Live Steer Avg:	\$158.00	Steer/Heifer Avg: \$256.96
Live Heifer Avg:	N/A	Dressed Neg. Grid Vol: 4,011
Dressed Steer Avg:	\$250.00	Steer/Heifer Avg: \$255.22
Dressed Heifer Avg:	N/A	TOTAL VOLUME: 52,297
LM CT106	TOTAL WK TO DATE VOLUME:	107,821
Committed:	80,387	Delivered: 69,056

LM CT118	TX-OK-NM	LM CT109
Neg. Cash Volume:	0	Dressed Formula Vol: 15,706
Live Steer Avg:	N/A	Steer/Heifer Avg: \$252.56
Live Heifer Avg:	N/A	Dressed Neg. Grid Vol: 0
Dressed Steer Avg:	N/A	Steer/Heifer Avg: N/A
Dressed Heifer Avg:	N/A	TOTAL VOLUME: 15,706
LM CT106	TOTAL WK TO DATE VOLUME:	29,878
Committed:	24,240	Delivered: 16,581

LM CT121	KANSAS	LM CT109
Neg. Cash Volume:	0	Dressed Formula Vol: 15,101
Live Steer Avg:	N/A	Steer/Heifer Avg: \$257.02
Live Heifer Avg:	N/A	Dressed Neg. Grid Vol: 828
Dressed Steer Avg:	N/A	Steer/Heifer Avg: \$254.33
Dressed Heifer Avg:	N/A	TOTAL VOLUME: 15,929
LM CT106	TOTAL WK TO DATE VOLUME:	35,600
Committed:	29,035	Delivered: 20,762

LM CT124	NEBRASKA	LM CT109
Neg. Cash Volume:	0	Dressed Formula Vol: 8,379
Live Steer Avg:	N/A	Steer/Heifer Avg: \$261.73
Live Heifer Avg:	N/A	Dressed Neg. Grid Vol: 2,562
Dressed Steer Avg:	N/A	Steer/Heifer Avg: \$255.76
Dressed Heifer Avg:	N/A	TOTAL VOLUME: 10,941
LM CT106	TOTAL WK TO DATE VOLUME:	23,798
Committed:	14,759	Delivered: 17,610

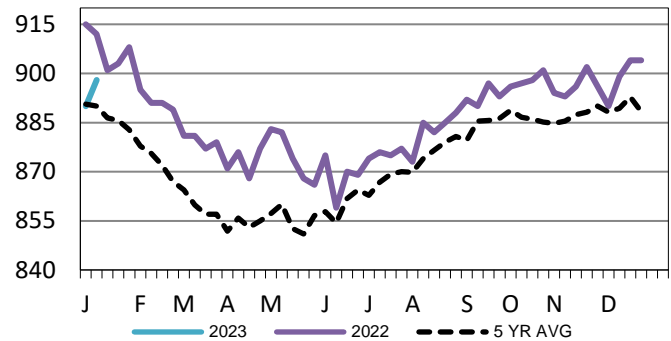
LM CT134	COLORADO	LM CT109
Neg. Cash Volume:	0	Dressed Formula Vol: 5,442
Live Steer Avg:	N/A	Steer/Heifer Avg: \$263.85
Live Heifer Avg:	N/A	Dressed Neg. Grid Vol: 467
Dressed Steer Avg:	N/A	Steer/Heifer Avg: \$251.12
Dressed Heifer Avg:	N/A	TOTAL VOLUME: 5,909
LM CT106	TOTAL WK TO DATE VOLUME:	12,133
Committed:	8,241	Delivered: 5,808

LM CT137	IA-MN	LM CT109
Neg. Cash Volume:	574	Dressed Formula Vol: 3,232
Live Steer Avg:	\$158.00	Steer/Heifer Avg: \$254.13
Live Heifer Avg:	N/A	Dressed Neg. Grid Vol: 1,554
Dressed Steer Avg:	\$250.00	Steer/Heifer Avg: \$263.38
Dressed Heifer Avg:	N/A	TOTAL VOLUME: 5,360
LM CT106	TOTAL WK TO DATE VOLUME:	6,780
Committed:	4,112	Delivered: 8,295

For Tuesday negotiated cash trade was at a standstill in the Southern Plains and Nebraska. Negotiated trade was mostly inactive on light demand in the Western Cornbelt. Not enough purchases in any feeding region for an adequate market test. The latest established market in any region was last week with live purchases in the Southern Plains and Nebraska at 157.00 and dressed purchases at 252.00 in Nebraska. In the Western Cornbelt last week live and dressed purchases traded from 158.00-160.00 and at 252.00, respectively.

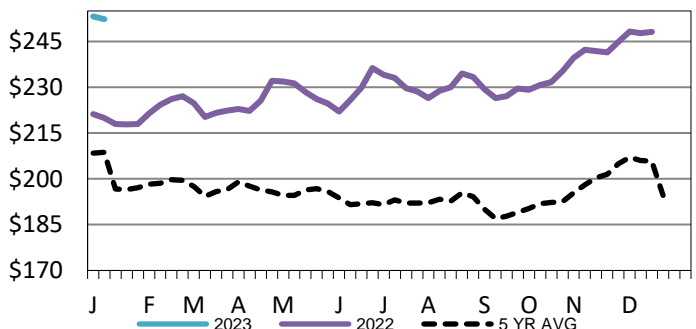
Kansas Formula Carcass Weights

WE 1-08-23 Weight = 898 lbs



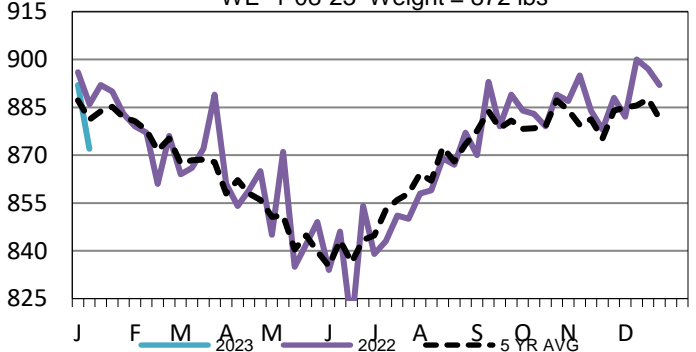
Iowa-Minnesota Wkly Dress Steer Wtd Avg

WE 1-08-23 Price = \$252.37



Colorado Formula Carcass Weights

WE 1-08-23 Weight = 872 lbs



USDA Livestock, Poultry and Grain Market News

St. Joseph, Missouri

Phone: 816-676-7000

stjoe.lpgmn@ams.usda.gov