

## Daily Direct Steer and Heifer Slaughter Cattle Summary

For Trade on:

Friday, January 06, 2023

<a href="#">LM CT100</a>	<b>5-AREA</b>	<a href="#">LM CT109</a>
<b>Neg. Cash Volume:</b>	12,987	<b>Dressed Formula Vol:</b> 51,932
<b>Live Steer Avg:</b>	\$157.18	<b>Steer/Heifer Avg:</b> \$254.68
<b>Live Heifer Avg:</b>	\$157.14	<b>Dressed Neg. Grid Vol:</b> 4,480
<b>Dressed Steer Avg:</b>	\$252.15	<b>Steer/Heifer Avg:</b> \$254.15
<b>Dressed Heifer Avg:</b>	\$252.06	<b>TOTAL VOLUME:</b> 69,399
<a href="#">LM CT106</a>	<b>TOTAL WK TO DATE VOLUME:</b>	<b>266,187</b>
<b>Committed:</b>	<b>102,864</b>	<b>Delivered:</b> 97,737

<a href="#">LM CT118</a>	<b>TX-OK-NM</b>	<a href="#">LM CT109</a>
<b>Neg. Cash Volume:</b>	701	<b>Dressed Formula Vol:</b> 18,450
<b>Live Steer Avg:</b>	\$157.00	<b>Steer/Heifer Avg:</b> \$252.14
<b>Live Heifer Avg:</b>	\$156.83	<b>Dressed Neg. Grid Vol:</b> 0
<b>Dressed Steer Avg:</b>	N/A	<b>Steer/Heifer Avg:</b> N/A
<b>Dressed Heifer Avg:</b>	N/A	<b>TOTAL VOLUME:</b> 19,151
<a href="#">LM CT106</a>	<b>TOTAL WK TO DATE VOLUME:</b>	<b>71,075</b>
<b>Committed:</b>	<b>37,711</b>	<b>Delivered:</b> 24,195

<a href="#">LM CT121</a>	<b>KANSAS</b>	<a href="#">LM CT109</a>
<b>Neg. Cash Volume:</b>	738	<b>Dressed Formula Vol:</b> 16,218
<b>Live Steer Avg:</b>	\$156.43	<b>Steer/Heifer Avg:</b> \$253.86
<b>Live Heifer Avg:</b>	N/A	<b>Dressed Neg. Grid Vol:</b> 0
<b>Dressed Steer Avg:</b>	\$248.00	<b>Steer/Heifer Avg:</b> N/A
<b>Dressed Heifer Avg:</b>	N/A	<b>TOTAL VOLUME:</b> 16,956
<a href="#">LM CT106</a>	<b>TOTAL WK TO DATE VOLUME:</b>	<b>74,273</b>
<b>Committed:</b>	<b>22,899</b>	<b>Delivered:</b> 26,886

<a href="#">LM CT124</a>	<b>NEBRASKA</b>	<a href="#">LM CT109</a>
<b>Neg. Cash Volume:</b>	7,924	<b>Dressed Formula Vol:</b> 8,448
<b>Live Steer Avg:</b>	\$156.90	<b>Steer/Heifer Avg:</b> \$258.51
<b>Live Heifer Avg:</b>	\$157.00	<b>Dressed Neg. Grid Vol:</b> 2,629
<b>Dressed Steer Avg:</b>	\$252.00	<b>Steer/Heifer Avg:</b> \$255.39
<b>Dressed Heifer Avg:</b>	\$252.00	<b>TOTAL VOLUME:</b> 19,001
<a href="#">LM CT106</a>	<b>TOTAL WK TO DATE VOLUME:</b>	<b>62,310</b>
<b>Committed:</b>	<b>19,000</b>	<b>Delivered:</b> 26,924

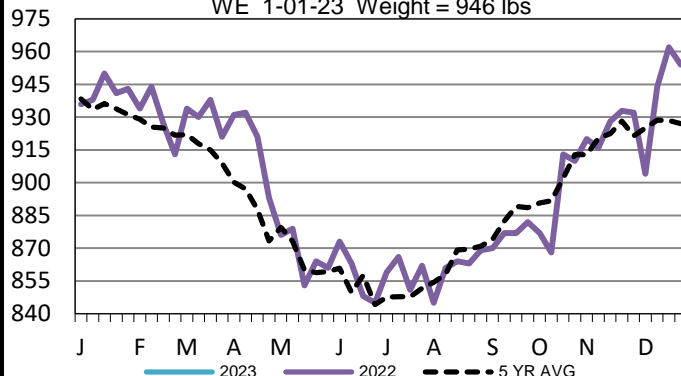
<a href="#">LM CT134</a>	<b>COLORADO</b>	<a href="#">LM CT109</a>
<b>Neg. Cash Volume:</b>	0	<b>Dressed Formula Vol:</b> 5,285
<b>Live Steer Avg:</b>	N/A	<b>Steer/Heifer Avg:</b> \$260.43
<b>Live Heifer Avg:</b>	N/A	<b>Dressed Neg. Grid Vol:</b> 582
<b>Dressed Steer Avg:</b>	N/A	<b>Steer/Heifer Avg:</b> \$250.34
<b>Dressed Heifer Avg:</b>	N/A	<b>TOTAL VOLUME:</b> 5,867
<a href="#">LM CT106</a>	<b>TOTAL WK TO DATE VOLUME:</b>	<b>22,156</b>
<b>Committed:</b>	<b>12,017</b>	<b>Delivered:</b> 5,292

<a href="#">LM CT137</a>	<b>IA-MN</b>	<a href="#">LM CT109</a>
<b>Neg. Cash Volume:</b>	3,624	<b>Dressed Formula Vol:</b> 3,687
<b>Live Steer Avg:</b>	\$157.18	<b>Steer/Heifer Avg:</b> \$254.39
<b>Live Heifer Avg:</b>	\$157.85	<b>Dressed Neg. Grid Vol:</b> 1,269
<b>Dressed Steer Avg:</b>	\$252.49	<b>Steer/Heifer Avg:</b> \$253.35
<b>Dressed Heifer Avg:</b>	\$252.10	<b>TOTAL VOLUME:</b> 8,580
<a href="#">LM CT106</a>	<b>TOTAL WK TO DATE VOLUME:</b>	<b>38,337</b>
<b>Committed:</b>	<b>11,237</b>	<b>Delivered:</b> 14,440

On Friday in Nebraska and Western Cornbelt negotiated cash trading was slow on light to moderate demand. In Nebraska, compared to last week, live purchases traded 1.00 lower at 157.00 and dressed purchases traded steady with the last reported market on Thursday at 252.00, with a light test noted of both live and dressed. Not enough purchases in the Western Cornbelt for a market trend. Thursday was the last reported market with live and dressed purchases from 158.00-160.00 and at 252.00, respectively. In the Southern Plains negotiated cash trading was mostly inactive on very light demand. Not enough purchases for a full market trend. In the Southern Plains on Thursday live purchases traded at 157.00.

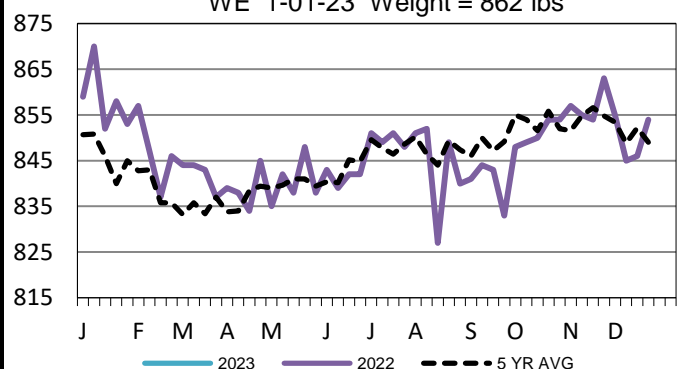
## Iowa-Minnesota Formula Carcass Weights

WE 1-01-23 Weight = 946 lbs



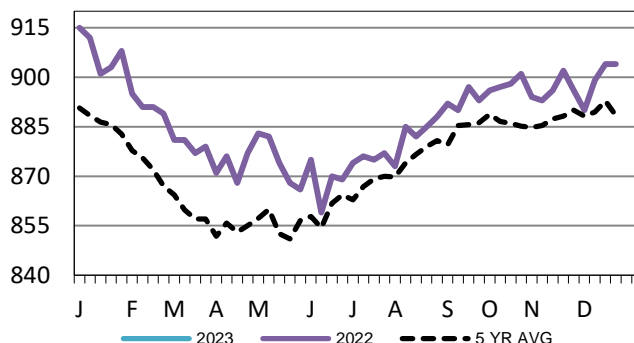
## TX-OK-NM Formula Carcass Weights

WE 1-01-23 Weight = 862 lbs



## Kansas Formula Carcass Weights

WE 1-01-23 Weight = 890 lbs



## USDA Livestock, Poultry and Grain Market News

St. Joseph, Missouri

Phone: 816-676-7000

[stjoe.lpgmn@ams.usda.gov](mailto:stjoe.lpgmn@ams.usda.gov)