

## Daily Direct Steer and Heifer Slaughter Cattle Summary

For Trade on:

Thursday, January 05, 2023

|                          |                                 |                                     |
|--------------------------|---------------------------------|-------------------------------------|
| <a href="#">LM CT100</a> | <b>5-AREA</b>                   | <a href="#">LM CT109</a>            |
| <b>Neg. Cash Volume:</b> | 40,107                          | <b>Dressed Formula Vol:</b> 44,650  |
| Live Steer Avg:          | \$157.86                        | Steer/Heifer Avg: \$253.41          |
| Live Heifer Avg:         | \$157.88                        | <b>Dressed Neg. Grid Vol:</b> 4,906 |
| Dressed Steer Avg:       | \$252.05                        | Steer/Heifer Avg: \$253.07          |
| Dressed Heifer Avg:      | \$252.04                        | <b>TOTAL VOLUME:</b> <b>89,663</b>  |
| <a href="#">LM CT106</a> | <b>TOTAL WK TO DATE VOLUME:</b> | <b>196,788</b>                      |
| <b>Committed:</b>        | <b>63,298</b>                   | <b>Delivered:</b> <b>74,319</b>     |

|                          |                                 |                                    |
|--------------------------|---------------------------------|------------------------------------|
| <a href="#">LM CT118</a> | <b>TX-OK-NM</b>                 | <a href="#">LM CT109</a>           |
| <b>Neg. Cash Volume:</b> | 4,710                           | <b>Dressed Formula Vol:</b> 16,602 |
| Live Steer Avg:          | \$157.00                        | Steer/Heifer Avg: \$251.24         |
| Live Heifer Avg:         | \$157.00                        | <b>Dressed Neg. Grid Vol:</b> 0    |
| Dressed Steer Avg:       | N/A                             | Steer/Heifer Avg: N/A              |
| Dressed Heifer Avg:      | N/A                             | <b>TOTAL VOLUME:</b> <b>21,312</b> |
| <a href="#">LM CT106</a> | <b>TOTAL WK TO DATE VOLUME:</b> | <b>51,924</b>                      |
| <b>Committed:</b>        | <b>19,688</b>                   | <b>Delivered:</b> <b>18,663</b>    |

|                          |                                 |                                     |
|--------------------------|---------------------------------|-------------------------------------|
| <a href="#">LM CT121</a> | <b>KANSAS</b>                   | <a href="#">LM CT109</a>            |
| <b>Neg. Cash Volume:</b> | 9,417                           | <b>Dressed Formula Vol:</b> 13,423  |
| Live Steer Avg:          | \$156.89                        | Steer/Heifer Avg: \$253.03          |
| Live Heifer Avg:         | \$157.00                        | <b>Dressed Neg. Grid Vol:</b> 1,560 |
| Dressed Steer Avg:       | \$249.52                        | Steer/Heifer Avg: \$250.75          |
| Dressed Heifer Avg:      | \$252.00                        | <b>TOTAL VOLUME:</b> <b>24,400</b>  |
| <a href="#">LM CT106</a> | <b>TOTAL WK TO DATE VOLUME:</b> | <b>57,317</b>                       |
| <b>Committed:</b>        | <b>15,330</b>                   | <b>Delivered:</b> <b>17,230</b>     |

|                          |                                 |                                     |
|--------------------------|---------------------------------|-------------------------------------|
| <a href="#">LM CT124</a> | <b>NEBRASKA</b>                 | <a href="#">LM CT109</a>            |
| <b>Neg. Cash Volume:</b> | 11,241                          | <b>Dressed Formula Vol:</b> 8,350   |
| Live Steer Avg:          | \$153.63                        | Steer/Heifer Avg: \$254.62          |
| Live Heifer Avg:         | N/A                             | <b>Dressed Neg. Grid Vol:</b> 1,948 |
| Dressed Steer Avg:       | \$252.10                        | Steer/Heifer Avg: \$253.86          |
| Dressed Heifer Avg:      | \$252.00                        | <b>TOTAL VOLUME:</b> <b>21,539</b>  |
| <a href="#">LM CT106</a> | <b>TOTAL WK TO DATE VOLUME:</b> | <b>43,309</b>                       |
| <b>Committed:</b>        | <b>10,134</b>                   | <b>Delivered:</b> <b>22,691</b>     |

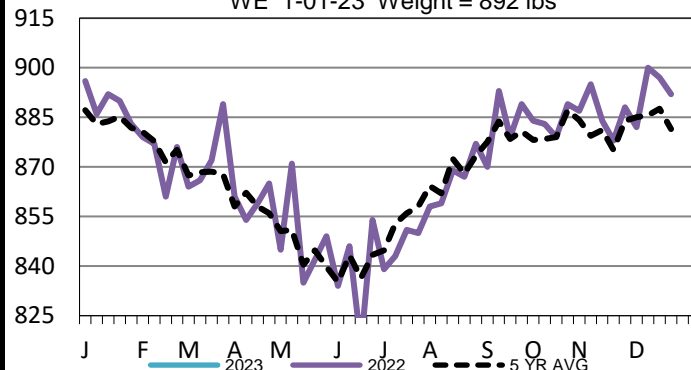
|                          |                                 |                                   |
|--------------------------|---------------------------------|-----------------------------------|
| <a href="#">LM CT134</a> | <b>COLORADO</b>                 | <a href="#">LM CT109</a>          |
| <b>Neg. Cash Volume:</b> | 0                               | <b>Dressed Formula Vol:</b> 4,149 |
| Live Steer Avg:          | N/A                             | Steer/Heifer Avg: \$260.74        |
| Live Heifer Avg:         | N/A                             | <b>Dressed Neg. Grid Vol:</b> 40  |
| Dressed Steer Avg:       | N/A                             | Steer/Heifer Avg: \$257.47        |
| Dressed Heifer Avg:      | N/A                             | <b>TOTAL VOLUME:</b> <b>4,189</b> |
| <a href="#">LM CT106</a> | <b>TOTAL WK TO DATE VOLUME:</b> | <b>15,600</b>                     |
| <b>Committed:</b>        | <b>8,658</b>                    | <b>Delivered:</b> <b>8,915</b>    |

|                          |                                 |                                     |
|--------------------------|---------------------------------|-------------------------------------|
| <a href="#">LM CT137</a> | <b>IA-MN</b>                    | <a href="#">LM CT109</a>            |
| <b>Neg. Cash Volume:</b> | 14,739                          | <b>Dressed Formula Vol:</b> 2,356   |
| Live Steer Avg:          | \$159.46                        | Steer/Heifer Avg: \$253.76          |
| Live Heifer Avg:         | \$159.09                        | <b>Dressed Neg. Grid Vol:</b> 1,358 |
| Dressed Steer Avg:       | \$252.32                        | Steer/Heifer Avg: \$254.45          |
| Dressed Heifer Avg:      | \$252.19                        | <b>TOTAL VOLUME:</b> <b>18,453</b>  |
| <a href="#">LM CT106</a> | <b>TOTAL WK TO DATE VOLUME:</b> | <b>29,757</b>                       |
| <b>Committed:</b>        | <b>9,488</b>                    | <b>Delivered:</b> <b>6,820</b>      |

On Thursday in the Texas Panhandle negotiated cash trade was slow on light demand. In Kansas negotiated cash trade was slow on moderate demand. Compared to last week in the Southern Plains live purchases traded steady at 157.00. In Nebraska negotiated cash trade was slow on moderate demand. Compared to last week dressed purchases traded steady at 252.00. Not enough live purchases for a market trend. The latest established live purchases market was last week at 158.00. In the Western Cornbelt negotiated cash trade and demand was moderate. Compared to last week live purchases traded steady to 1.00 higher from 158.00-160.00 and dressed purchases traded steady to 2.00 higher at 252.00.

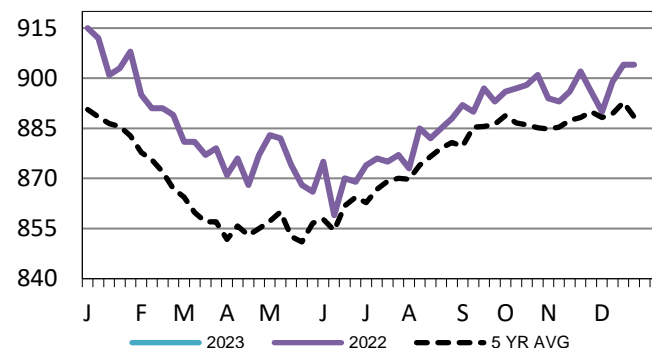
## Colorado Formula Carcass Weights

WE 1-01-23 Weight = 892 lbs



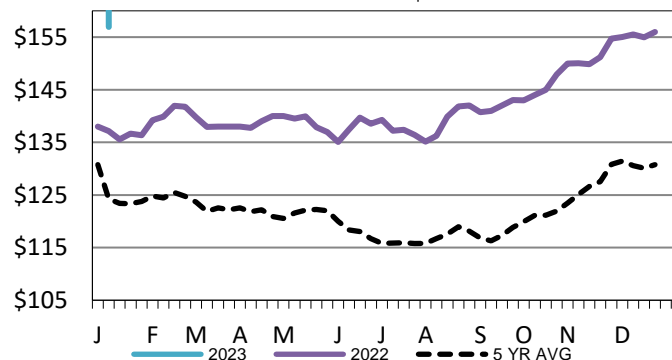
## Kansas Formula Carcass Weights

WE 1-01-23 Weight = 890 lbs



## Kansas Weekly Live Steer Weighted Average

WE 1-01-23 Price = \$156.94



## USDA Livestock, Poultry and Grain Market News

St. Joseph, Missouri

Phone: 816-676-7000

[stjoe.lpgmn@ams.usda.gov](mailto:stjoe.lpgmn@ams.usda.gov)