

Daily Direct Steer and Heifer Slaughter Cattle Summary

For Trade on:

Tuesday, January 03, 2023

LM CT100	5-AREA	LM CT109
Neg. Cash Volume:	138	Dressed Formula Vol: 50,447
Live Steer Avg:	N/A	Steer/Heifer Avg: \$253.07
Live Heifer Avg:	N/A	Dressed Neg. Grid Vol: 4,173
Dressed Steer Avg:	N/A	Steer/Heifer Avg: \$251.77
Dressed Heifer Avg:	N/A	TOTAL VOLUME: 54,758
LM CT106	TOTAL WK TO DATE VOLUME:	54,620
Committed:	55,305	Delivered: 67,940

LM CT118	TX-OK-NM	LM CT109
Neg. Cash Volume:	0	Dressed Formula Vol: 13,537
Live Steer Avg:	N/A	Steer/Heifer Avg: \$252.23
Live Heifer Avg:	N/A	Dressed Neg. Grid Vol: 473
Dressed Steer Avg:	N/A	Steer/Heifer Avg: \$248.26
Dressed Heifer Avg:	N/A	TOTAL VOLUME: 14,010
LM CT106	TOTAL WK TO DATE VOLUME:	14,010
Committed:	19,392	Delivered: 17,917

LM CT121	KANSAS	LM CT109
Neg. Cash Volume:	0	Dressed Formula Vol: 16,405
Live Steer Avg:	N/A	Steer/Heifer Avg: \$252.24
Live Heifer Avg:	N/A	Dressed Neg. Grid Vol: 1,443
Dressed Steer Avg:	N/A	Steer/Heifer Avg: \$250.07
Dressed Heifer Avg:	N/A	TOTAL VOLUME: 17,848
LM CT106	TOTAL WK TO DATE VOLUME:	17,848
Committed:	13,127	Delivered: 23,437

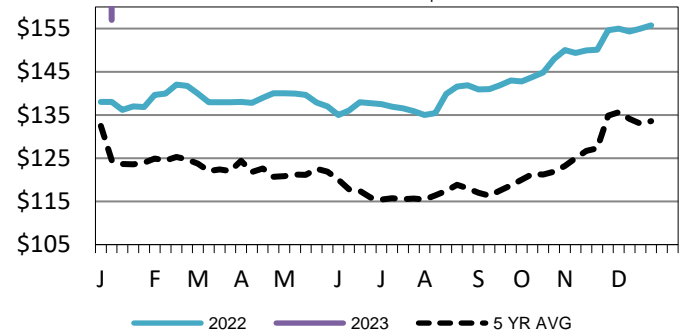
LM CT124	NEBRASKA	LM CT109
Neg. Cash Volume:	0	Dressed Formula Vol: 10,456
Live Steer Avg:	N/A	Steer/Heifer Avg: \$254.42
Live Heifer Avg:	N/A	Dressed Neg. Grid Vol: 755
Dressed Steer Avg:	N/A	Steer/Heifer Avg: \$250.43
Dressed Heifer Avg:	N/A	TOTAL VOLUME: 11,211
LM CT106	TOTAL WK TO DATE VOLUME:	11,211
Committed:	13,498	Delivered: 13,360

LM CT134	COLORADO	LM CT109
Neg. Cash Volume:	0	Dressed Formula Vol: 6,881
Live Steer Avg:	N/A	Steer/Heifer Avg: \$253.88
Live Heifer Avg:	N/A	Dressed Neg. Grid Vol: 341
Dressed Steer Avg:	N/A	Steer/Heifer Avg: \$250.16
Dressed Heifer Avg:	N/A	TOTAL VOLUME: 7,222
LM CT106	TOTAL WK TO DATE VOLUME:	7,222
Committed:	4,644	Delivered: 7,575

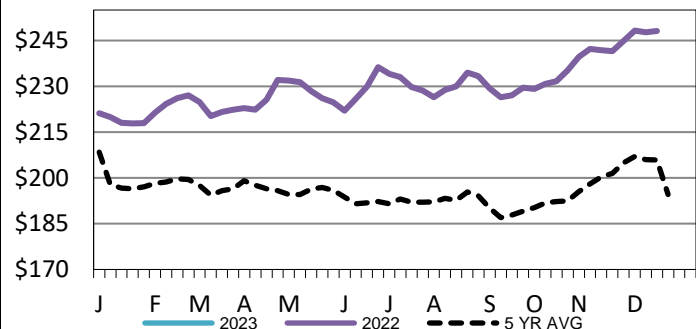
LM CT137	IA-MN	LM CT109
Neg. Cash Volume:	138	Dressed Formula Vol: 3,574
Live Steer Avg:	N/A	Steer/Heifer Avg: \$255.79
Live Heifer Avg:	N/A	Dressed Neg. Grid Vol: 1,276
Dressed Steer Avg:	N/A	Steer/Heifer Avg: \$256.60
Dressed Heifer Avg:	N/A	TOTAL VOLUME: 4,988
LM CT106	TOTAL WK TO DATE VOLUME:	4,988
Committed:	4,644	Delivered: 5,651

On Tuesday negotiated cash trade was mostly inactive on light demand in all feeding regions. Not enough purchases in any feeding region for an adequate market test. The latest established market in the Southern Plains was last week with live purchases at 157.00. For the prior week in Nebraska live and dressed purchases traded at 158.00 and 252.00, respectively. For the previous week in the Western Cornbelt live and dressed purchases traded from 157.00-160.00 and from 250.00-252.00, respectively.

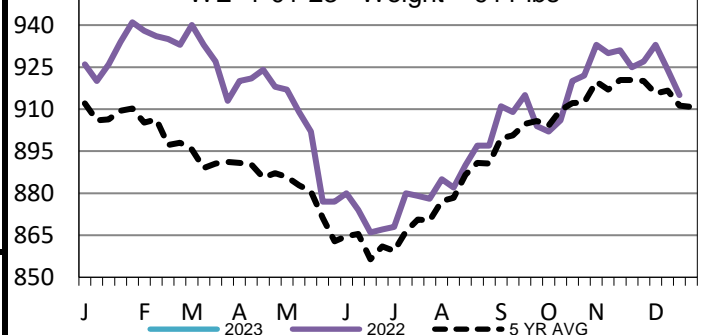
TX-OK-NM Wkly Live Steer Wtd Avg
WE 1-01-23 Price = \$ 157.00



Iowa-Minnesota Wkly Dress Steer Wtd Avg
WE 1-01-23 Price = \$253.21



Nebraska Formula Carcass Weights
WE 1-01-23 Weight = 911 lbs



USDA Livestock, Poultry and Grain Market News

St. Joseph, Missouri

Phone: 816-676-7000

stjoe.lpgmn@ams.usda.gov