

## Daily Direct Steer and Heifer Slaughter Cattle Summary

For Trade on:

Tuesday, December 27, 2022

<a href="#">LM CT100</a>	<b>5-AREA</b>	<a href="#">LM CT109</a>
<b>Neg. Cash Volume:</b>	37	<b>Dressed Formula Vol:</b> 41,207
<b>Live Steer Avg:</b>	N/A	<b>Steer/Heifer Avg:</b> \$250.90
<b>Live Heifer Avg:</b>	N/A	<b>Dressed Neg. Grid Vol:</b> 4,086
<b>Dressed Steer Avg:</b>	N/A	<b>Steer/Heifer Avg:</b> \$249.22
<b>Dressed Heifer Avg:</b>	N/A	<b>TOTAL VOLUME:</b> 45,330
<a href="#">LM CT106</a>	<b>TOTAL WK TO DATE VOLUME:</b>	<b>45,330</b>
<b>Committed:</b>	<b>62,999</b>	<b>Delivered:</b> 75,639

<a href="#">LM CT118</a>	<b>TX-OK-NM</b>	<a href="#">LM CT109</a>
<b>Neg. Cash Volume:</b>	0	<b>Dressed Formula Vol:</b> 15,705
<b>Live Steer Avg:</b>	N/A	<b>Steer/Heifer Avg:</b> \$249.43
<b>Live Heifer Avg:</b>	N/A	<b>Dressed Neg. Grid Vol:</b> 0
<b>Dressed Steer Avg:</b>	N/A	<b>Steer/Heifer Avg:</b> N/A
<b>Dressed Heifer Avg:</b>	N/A	<b>TOTAL VOLUME:</b> 15,705
<a href="#">LM CT106</a>	<b>TOTAL WK TO DATE VOLUME:</b>	<b>15,705</b>
<b>Committed:</b>	<b>26,009</b>	<b>Delivered:</b> 15,308

<a href="#">LM CT121</a>	<b>KANSAS</b>	<a href="#">LM CT109</a>
<b>Neg. Cash Volume:</b>	0	<b>Dressed Formula Vol:</b> 11,335
<b>Live Steer Avg:</b>	N/A	<b>Steer/Heifer Avg:</b> \$250.23
<b>Live Heifer Avg:</b>	N/A	<b>Dressed Neg. Grid Vol:</b> 1,657
<b>Dressed Steer Avg:</b>	N/A	<b>Steer/Heifer Avg:</b> \$249.46
<b>Dressed Heifer Avg:</b>	N/A	<b>TOTAL VOLUME:</b> 12,992
<a href="#">LM CT106</a>	<b>TOTAL WK TO DATE VOLUME:</b>	<b>12,992</b>
<b>Committed:</b>	<b>12,264</b>	<b>Delivered:</b> 19,252

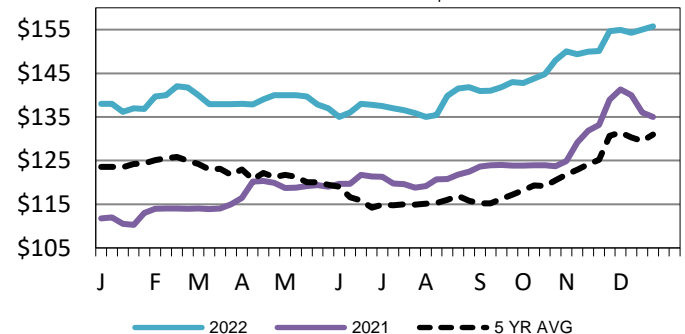
<a href="#">LM CT124</a>	<b>NEBRASKA</b>	<a href="#">LM CT109</a>
<b>Neg. Cash Volume:</b>	0	<b>Dressed Formula Vol:</b> 8,071
<b>Live Steer Avg:</b>	N/A	<b>Steer/Heifer Avg:</b> \$254.48
<b>Live Heifer Avg:</b>	N/A	<b>Dressed Neg. Grid Vol:</b> 1,207
<b>Dressed Steer Avg:</b>	N/A	<b>Steer/Heifer Avg:</b> \$247.44
<b>Dressed Heifer Avg:</b>	N/A	<b>TOTAL VOLUME:</b> 9,278
<a href="#">LM CT106</a>	<b>TOTAL WK TO DATE VOLUME:</b>	<b>9,278</b>
<b>Committed:</b>	<b>11,719</b>	<b>Delivered:</b> 19,189

<a href="#">LM CT134</a>	<b>COLORADO</b>	<a href="#">LM CT109</a>
<b>Neg. Cash Volume:</b>	0	<b>Dressed Formula Vol:</b> 3,777
<b>Live Steer Avg:</b>	N/A	<b>Steer/Heifer Avg:</b> \$250.39
<b>Live Heifer Avg:</b>	N/A	<b>Dressed Neg. Grid Vol:</b> 358
<b>Dressed Steer Avg:</b>	N/A	<b>Steer/Heifer Avg:</b> \$249.37
<b>Dressed Heifer Avg:</b>	N/A	<b>TOTAL VOLUME:</b> 4,135
<a href="#">LM CT106</a>	<b>TOTAL WK TO DATE VOLUME:</b>	<b>4,135</b>
<b>Committed:</b>	<b>4,112</b>	<b>Delivered:</b> 9,200

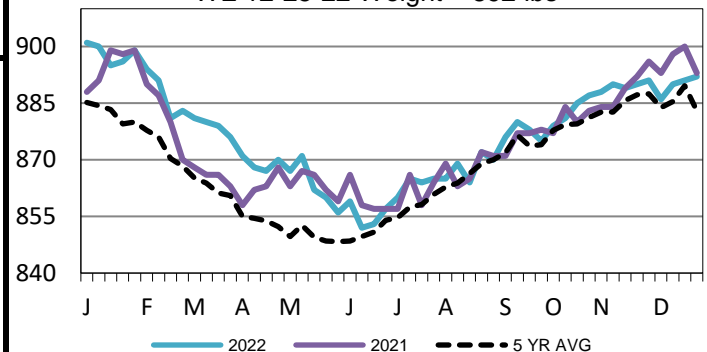
<a href="#">LM CT137</a>	<b>IA-MN</b>	<a href="#">LM CT109</a>
<b>Neg. Cash Volume:</b>	37	<b>Dressed Formula Vol:</b> 2,658
<b>Live Steer Avg:</b>	N/A	<b>Steer/Heifer Avg:</b> \$253.83
<b>Live Heifer Avg:</b>	N/A	<b>Dressed Neg. Grid Vol:</b> 904
<b>Dressed Steer Avg:</b>	N/A	<b>Steer/Heifer Avg:</b> \$251.39
<b>Dressed Heifer Avg:</b>	N/A	<b>TOTAL VOLUME:</b> 3,599
<a href="#">LM CT106</a>	<b>TOTAL WK TO DATE VOLUME:</b>	<b>4,599</b>
<b>Committed:</b>	<b>8,895</b>	<b>Delivered:</b> 12,690

On Tuesday negotiated cash trading was mostly inactive on very light demand in the Western Cornbelt, and at a standstill in all other regions. Not enough purchases in any region for a market trend. Last week in the Southern Plains live purchases traded at 156.00. For the prior week in Nebraska live and dressed purchases traded from 156.00-157.00 and at 249.00, respectively. In the Western Cornbelt for the previous week live and dressed purchases traded at 157.00 and from 248.00-249.00, respectively.

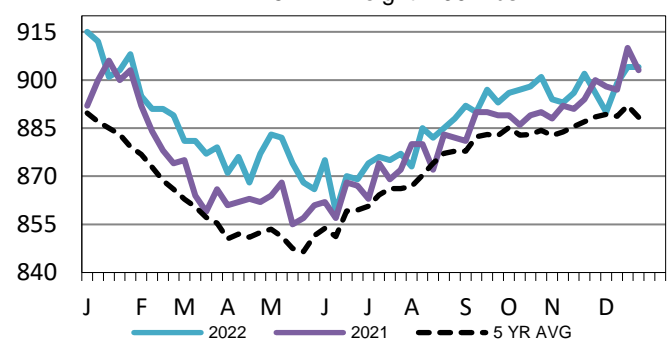
**TX-OK-NM Wkly Live Steer Wtd Avg**  
WE 12-25-22 Price = \$ 155.74



**5-Area Formula Carcass Weight**  
WE 12-25-22 Weight = 892 lbs



**Kansas Formula Carcass Weights**  
WE 12-25-22 Weight = 904 lbs



## USDA Livestock, Poultry and Grain Market News

St. Joseph, Missouri

Phone: 816-676-7000

[stjoe.lpgmn@ams.usda.gov](mailto:stjoe.lpgmn@ams.usda.gov)