

Daily Direct Steer and Heifer Slaughter Cattle Summary

For Trade on:

Wednesday, December 21, 2022

LM CT100	5-AREA	LM CT109
Neg. Cash Volume:	250	Dressed Formula Vol: 28,275
Live Steer Avg:	\$155.00	Steer/Heifer Avg: \$251.83
Live Heifer Avg:	\$155.00	Dressed Neg. Grid Vol: 3,967
Dressed Steer Avg:	N/A	Steer/Heifer Avg: \$251.44
Dressed Heifer Avg:	N/A	TOTAL VOLUME: 32,492
LM CT106	TOTAL WK TO DATE VOLUME:	75,161
Committed:	63,471	Delivered: 74,301

LM CT118	TX-OK-NM	LM CT109
Neg. Cash Volume:	0	Dressed Formula Vol: 14,093
Live Steer Avg:	N/A	Steer/Heifer Avg: \$252.40
Live Heifer Avg:	N/A	Dressed Neg. Grid Vol: 0
Dressed Steer Avg:	N/A	Steer/Heifer Avg: N/A
Dressed Heifer Avg:	N/A	TOTAL VOLUME: 14,093
LM CT106	TOTAL WK TO DATE VOLUME:	24,120
Committed:	22,600	Delivered: 19,034

LM CT121	KANSAS	LM CT109
Neg. Cash Volume:	0	Dressed Formula Vol: 13,341
Live Steer Avg:	N/A	Steer/Heifer Avg: \$251.81
Live Heifer Avg:	N/A	Dressed Neg. Grid Vol: 1,155
Dressed Steer Avg:	N/A	Steer/Heifer Avg: \$248.86
Dressed Heifer Avg:	N/A	TOTAL VOLUME: 14,496
LM CT106	TOTAL WK TO DATE VOLUME:	25,088
Committed:	18,530	Delivered: 19,568

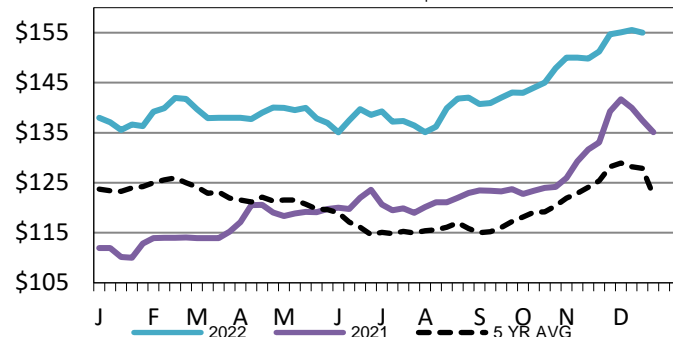
LM CT124	NEBRASKA	LM CT109
Neg. Cash Volume:	0	Dressed Formula Vol: 7,325
Live Steer Avg:	N/A	Steer/Heifer Avg: \$250.63
Live Heifer Avg:	N/A	Dressed Neg. Grid Vol: 1,687
Dressed Steer Avg:	N/A	Steer/Heifer Avg: \$250.67
Dressed Heifer Avg:	N/A	TOTAL VOLUME: 9,012
LM CT106	TOTAL WK TO DATE VOLUME:	14,318
Committed:	11,491	Delivered: 20,001

LM CT134	COLORADO	LM CT109
Neg. Cash Volume:	0	Dressed Formula Vol: 1,643
Live Steer Avg:	N/A	Steer/Heifer Avg: \$256.13
Live Heifer Avg:	N/A	Dressed Neg. Grid Vol: 0
Dressed Steer Avg:	N/A	Steer/Heifer Avg: N/A
Dressed Heifer Avg:	N/A	TOTAL VOLUME: 1,643
LM CT106	TOTAL WK TO DATE VOLUME:	5,137
Committed:	4,934	Delivered: 5,935

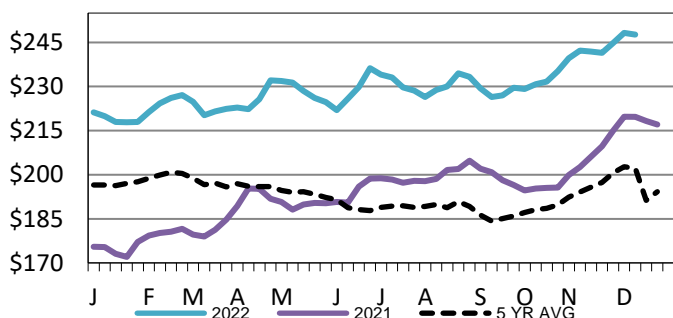
LM CT137	IA-MN	LM CT109
Neg. Cash Volume:	250	Dressed Formula Vol: 1,951
Live Steer Avg:	\$155.00	Steer/Heifer Avg: \$248.74
Live Heifer Avg:	\$155.00	Dressed Neg. Grid Vol: 1,125
Dressed Steer Avg:	N/A	Steer/Heifer Avg: \$255.23
Dressed Heifer Avg:	N/A	TOTAL VOLUME: 3,326
LM CT106	TOTAL WK TO DATE VOLUME:	6,970
Committed:	5,916	Delivered: 9,763

On Tuesday in the Southern and Northern Plains negotiated cash trade was at a standstill. In the Western Cornbelt negotiated cash trade was mostly inactive on very light demand. Not enough purchases for a market trend in any feeding region. The latest established market in the Southern Plains was last week with live purchases at 155.00. For the prior week in Nebraska and Western Cornbelt live and dressed purchases traded from 155.00-157.00 and at 248.00, respectively. In Colorado the last fully reported market was two weeks ago with live purchases at 157.00.

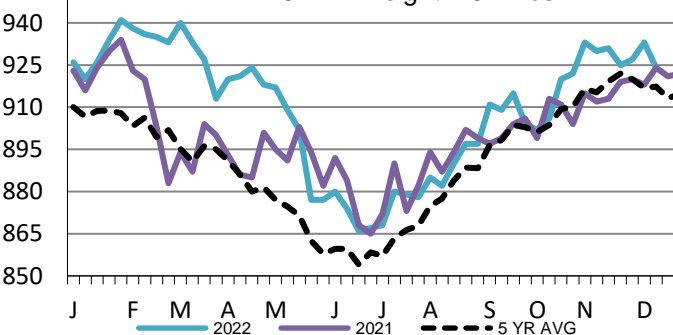
Kansas Weekly Live Steer Weighted Average
WE 12-18-22 Price = \$154.98



Iowa-Minnesota Wkly Dress Steer Wtd Avg
WE 12-18-22 Price = \$247.68



Nebraska Formula Carcass Weights
WE 12-18-22 Weight = 924 lbs



USDA Livestock, Poultry and Grain Market News

St. Joseph, Missouri

Phone: 816-676-7000

stjoe.lpgmn@ams.usda.gov