

## Daily Direct Steer and Heifer Slaughter Cattle Summary

For Trade on:

Friday, November 25, 2022

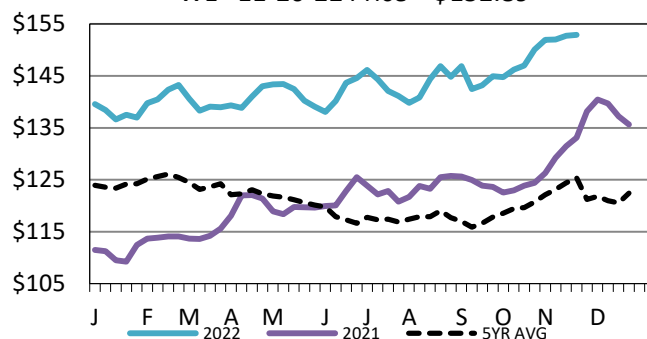
<a href="#">LM CT100</a>	<b>5-AREA</b>	<a href="#">LM CT109</a>
Neg. Cash Volume: 818		Dressed Formula Vol: 51,874
Live Steer Avg: \$155.61		Steer/Heifer Avg: \$246.11
Live Heifer Avg: \$156.00		Dressed Neg. Grid Vol: 4,270
Dressed Steer Avg: \$244.00		Steer/Heifer Avg: \$244.97
Dressed Heifer Avg: \$244.00	<b>TOTAL VOLUME: 56,962</b>	
<a href="#">LM CT106</a>	<b>TOTAL WK TO DATE VOLUME: 263,927</b>	
Committed: 68,126	Delivered: 128,321	

On Friday negotiated cash trade was mostly inactive with light demand in all major feeding regions. The last reported trade in any region was on Wednesday. In the Texas Panhandle, live purchases traded from 154.00-155.00. In Kansas live purchases traded at 155.00. In Nebraska live and dressed purchases traded from 157.00-158.00 and at 245.00, respectively. In the Western Cornbelt live and dressed purchases traded at 157.00 and at 245.00, respectively.

<a href="#">LM CT118</a>	<b>TX-OK-NM</b>	<a href="#">LM CT109</a>
Neg. Cash Volume: 0		Dressed Formula Vol: 13,204
Live Steer Avg: N/A		Steer/Heifer Avg: \$239.45
Live Heifer Avg: N/A		Dressed Neg. Grid Vol: 0
Dressed Steer Avg: N/A		Steer/Heifer Avg: N/A
Dressed Heifer Avg: N/A	<b>TOTAL VOLUME: 13,204</b>	
<a href="#">LM CT106</a>	<b>TOTAL WK TO DATE VOLUME: 73,325</b>	
Committed: 20,955	Delivered: 34,079	

## 5-Area Live Steer Weighted Average

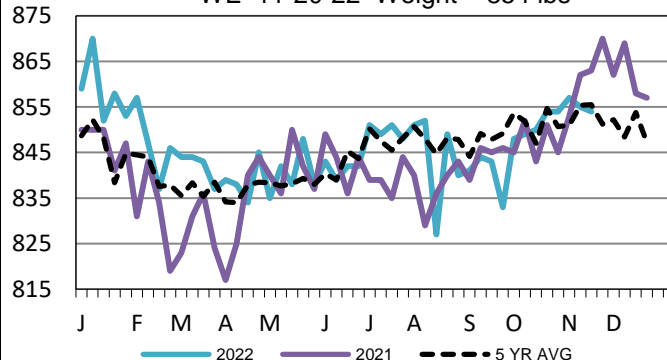
WE 11-20-22 Price = \$152.89



<a href="#">LM CT121</a>	<b>KANSAS</b>	<a href="#">LM CT109</a>
Neg. Cash Volume: 327		Dressed Formula Vol: 13,720
Live Steer Avg: \$155.00		Steer/Heifer Avg: \$245.54
Live Heifer Avg: N/A		Dressed Neg. Grid Vol: 0
Dressed Steer Avg: \$244.00		Steer/Heifer Avg: N/A
Dressed Heifer Avg: \$244.00	<b>TOTAL VOLUME: 14,047</b>	
<a href="#">LM CT106</a>	<b>TOTAL WK TO DATE VOLUME: 64,234</b>	
Committed: 19,702	Delivered: 33,890	

## TX-OK-NM Formula Carcass Weights

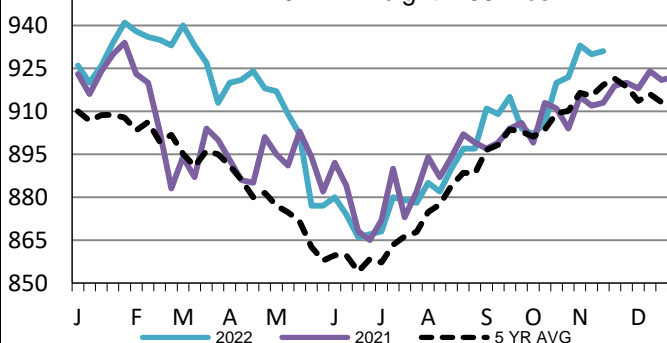
WE 11-20-22 Weight = 854 lbs



<a href="#">LM CT124</a>	<b>NEBRASKA</b>	<a href="#">LM CT109</a>
Neg. Cash Volume: 80		Dressed Formula Vol: 17,140
Live Steer Avg: N/A		Steer/Heifer Avg: \$249.86
Live Heifer Avg: N/A		Dressed Neg. Grid Vol: 1,650
Dressed Steer Avg: \$244.00		Steer/Heifer Avg: \$242.12
Dressed Heifer Avg: N/A	<b>TOTAL VOLUME: 18,870</b>	
<a href="#">LM CT106</a>	<b>TOTAL WK TO DATE VOLUME: 67,925</b>	
Committed: 11,918	Delivered: 30,441	

## Nebraska Formula Carcass Weights

WE 11-20-22 Weight = 931 lbs



<a href="#">LM CT134</a>	<b>COLORADO</b>	<a href="#">LM CT109</a>
Neg. Cash Volume: 0		Dressed Formula Vol: 4,818
Live Steer Avg: N/A		Steer/Heifer Avg: \$253.15
Live Heifer Avg: N/A		Dressed Neg. Grid Vol: 43
Dressed Steer Avg: N/A		Steer/Heifer Avg: \$248.85
Dressed Heifer Avg: N/A	<b>TOTAL VOLUME: 4,861</b>	
<a href="#">LM CT106</a>	<b>TOTAL WK TO DATE VOLUME: 17,589</b>	
Committed: 9,949	Delivered: 12,478	

<a href="#">LM CT137</a>	<b>IA-MN</b>	<a href="#">LM CT109</a>
Neg. Cash Volume: 411		Dressed Formula Vol: 3,422
Live Steer Avg: \$156.67		Steer/Heifer Avg: \$246.56
Live Heifer Avg: \$156.00		Dressed Neg. Grid Vol: 2,617
Dressed Steer Avg: \$244.00		Steer/Heifer Avg: \$247.07
Dressed Heifer Avg: N/A	<b>TOTAL VOLUME: 6,450</b>	
<a href="#">LM CT106</a>	<b>TOTAL WK TO DATE VOLUME: 41,975</b>	
Committed: 5,602	Delivered: 17,433	

## USDA Livestock, Poultry and Grain Market News

St. Joseph, Missouri

Phone: 816-676-7000

[stjoe.lpgmn@ams.usda.gov](mailto:stjoe.lpgmn@ams.usda.gov)