

# Daily Direct Steer and Heifer Slaughter Cattle Summary

For Trade on:

Tuesday, November 22, 2022

<a href="#">LM CT100</a>	<b>5-AREA</b>	<a href="#">LM CT109</a>
<b>Neg. Cash Volume:</b>	5,352	<b>Dressed Formula Vol:</b> 35,313
<b>Live Steer Avg:</b>	\$154.82	<b>Steer/Heifer Avg:</b> \$247.49
<b>Live Heifer Avg:</b>	\$154.26	<b>Dressed Neg. Grid Vol:</b> 2,355
<b>Dressed Steer Avg:</b>	N/A	<b>Steer/Heifer Avg:</b> \$245.59
<b>Dressed Heifer Avg:</b>	N/A	<b>TOTAL VOLUME:</b> 43,020
<a href="#">LM CT106</a>	<b>TOTAL WK TO DATE VOLUME:</b>	<b>93,562</b>
<b>Committed:</b>	<b>80,962</b>	<b>Delivered:</b> 64,025

<a href="#">LM CT118</a>	<b>TX-OK-NM</b>	<a href="#">LM CT109</a>
<b>Neg. Cash Volume:</b>	535	<b>Dressed Formula Vol:</b> 12,675
<b>Live Steer Avg:</b>	\$154.00	<b>Steer/Heifer Avg:</b> \$243.50
<b>Live Heifer Avg:</b>	\$154.00	<b>Dressed Neg. Grid Vol:</b> 0
<b>Dressed Steer Avg:</b>	N/A	<b>Steer/Heifer Avg:</b> N/A
<b>Dressed Heifer Avg:</b>	N/A	<b>TOTAL VOLUME:</b> 13,210
<a href="#">LM CT106</a>	<b>TOTAL WK TO DATE VOLUME:</b>	<b>33,918</b>
<b>Committed:</b>	<b>28,013</b>	<b>Delivered:</b> 19,082

<a href="#">LM CT121</a>	<b>KANSAS</b>	<a href="#">LM CT109</a>
<b>Neg. Cash Volume:</b>	2,595	<b>Dressed Formula Vol:</b> 7,547
<b>Live Steer Avg:</b>	\$154.13	<b>Steer/Heifer Avg:</b> \$244.40
<b>Live Heifer Avg:</b>	\$154.00	<b>Dressed Neg. Grid Vol:</b> 1,009
<b>Dressed Steer Avg:</b>	N/A	<b>Steer/Heifer Avg:</b> \$243.90
<b>Dressed Heifer Avg:</b>	N/A	<b>TOTAL VOLUME:</b> 11,151
<a href="#">LM CT106</a>	<b>TOTAL WK TO DATE VOLUME:</b>	<b>28,822</b>
<b>Committed:</b>	<b>23,407</b>	<b>Delivered:</b> 13,264

<a href="#">LM CT124</a>	<b>NEBRASKA</b>	<a href="#">LM CT109</a>
<b>Neg. Cash Volume:</b>	0	<b>Dressed Formula Vol:</b> 6,843
<b>Live Steer Avg:</b>	N/A	<b>Steer/Heifer Avg:</b> \$253.76
<b>Live Heifer Avg:</b>	N/A	<b>Dressed Neg. Grid Vol:</b> 616
<b>Dressed Steer Avg:</b>	N/A	<b>Steer/Heifer Avg:</b> \$247.45
<b>Dressed Heifer Avg:</b>	N/A	<b>TOTAL VOLUME:</b> 7,459
<a href="#">LM CT106</a>	<b>TOTAL WK TO DATE VOLUME:</b>	<b>12,090</b>
<b>Committed:</b>	<b>14,354</b>	<b>Delivered:</b> 16,198

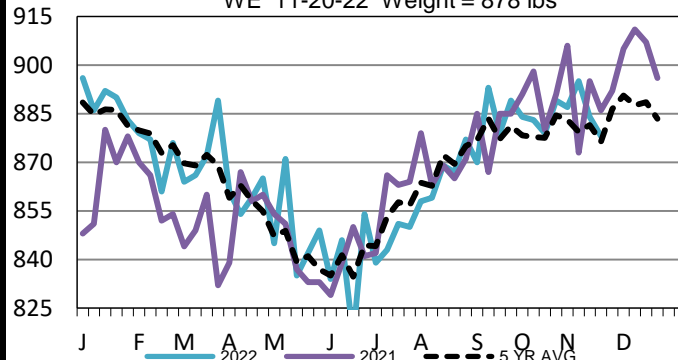
<a href="#">LM CT134</a>	<b>COLORADO</b>	<a href="#">LM CT109</a>
<b>Neg. Cash Volume:</b>	0	<b>Dressed Formula Vol:</b> 6,285
<b>Live Steer Avg:</b>	N/A	<b>Steer/Heifer Avg:</b> \$252.39
<b>Live Heifer Avg:</b>	N/A	<b>Dressed Neg. Grid Vol:</b> 105
<b>Dressed Steer Avg:</b>	N/A	<b>Steer/Heifer Avg:</b> \$244.52
<b>Dressed Heifer Avg:</b>	N/A	<b>TOTAL VOLUME:</b> 6,390
<a href="#">LM CT106</a>	<b>TOTAL WK TO DATE VOLUME:</b>	<b>11,013</b>
<b>Committed:</b>	<b>7,259</b>	<b>Delivered:</b> 5,245

<a href="#">LM CT137</a>	<b>IA-MN</b>	<a href="#">LM CT109</a>
<b>Neg. Cash Volume:</b>	2,222	<b>Dressed Formula Vol:</b> 2,185
<b>Live Steer Avg:</b>	\$155.78	<b>Steer/Heifer Avg:</b> \$248.75
<b>Live Heifer Avg:</b>	\$155.00	<b>Dressed Neg. Grid Vol:</b> 625
<b>Dressed Steer Avg:</b>	N/A	<b>Steer/Heifer Avg:</b> \$246.67
<b>Dressed Heifer Avg:</b>	N/A	<b>TOTAL VOLUME:</b> 5,032
<a href="#">LM CT106</a>	<b>TOTAL WK TO DATE VOLUME:</b>	<b>8,186</b>
<b>Committed:</b>	<b>7,929</b>	<b>Delivered:</b> 10,236

On Tuesday negotiated cash trade was limited on moderate demand in the Southern Plains and the Western Cornbelt. A few early live purchases traded mostly at 154.00 in the Southern Plains with a few early live purchases from 155.00-157.00 in the Western Cornbelt, however not enough for an adequate market test. Trade was inactive on moderate demand in Nebraska. The latest established market in any feeding region was last week with live purchases in the Texas Panhandle at 150.00. In Kansas live purchases traded from 150.00- 152.00. In Nebraska live purchases traded from 153.00-155.00 with dressed purchases at 242.00. In the Western Cornbelt, live purchases traded from 152.00-155.00 and dressed purchases at 242.00.

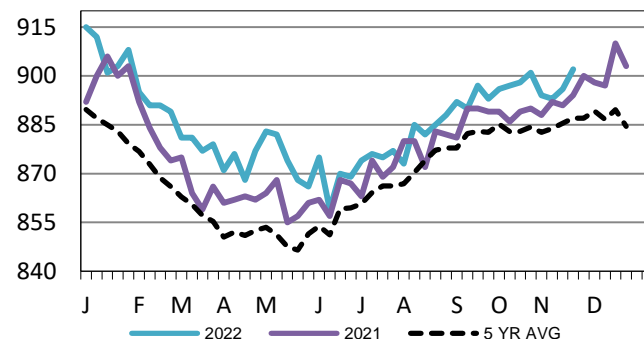
## Colorado Formula Carcass Weights

WE 11-20-22 Weight = 878 lbs



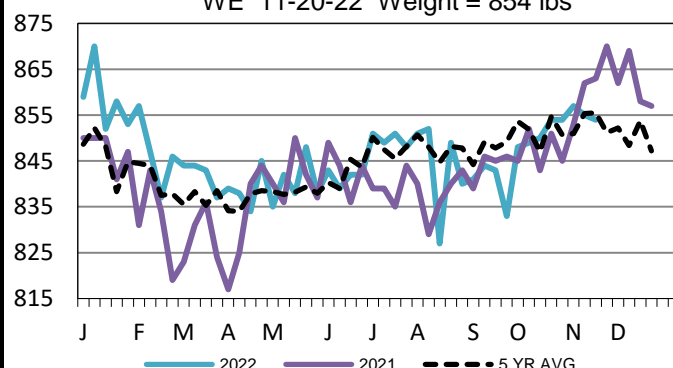
## Kansas Formula Carcass Weights

WE 11-20-22 Weight = 902 lbs



## TX-OK-NM Formula Carcass Weights

WE 11-20-22 Weight = 854 lbs



## USDA Livestock, Poultry and Grain Market News

St. Joseph, Missouri

Phone: 816-676-7000

[stjoe.lpgmn@ams.usda.gov](mailto:stjoe.lpgmn@ams.usda.gov)