

# Daily Direct Steer and Heifer Slaughter Cattle Summary

For Trade on:

Friday, November 18, 2022

<a href="#">LM CT100</a>	<b>5-AREA</b>	<a href="#">LM CT109</a>
<b>Neg. Cash Volume:</b>	5,446	<b>Dressed Formula Vol:</b> 40,921
<b>Live Steer Avg:</b>	\$154.93	<b>Steer/Heifer Avg:</b> \$245.22
<b>Live Heifer Avg:</b>	\$153.99	<b>Dressed Neg. Grid Vol:</b> 3,827
<b>Dressed Steer Avg:</b>	\$241.22	<b>Steer/Heifer Avg:</b> \$244.44
<b>Dressed Heifer Avg:</b>	\$243.39	<b>TOTAL VOLUME:</b> 50,194
<a href="#">LM CT106</a>	<b>TOTAL WK TO DATE VOLUME:</b>	<b>309,018</b>
<b>Committed:</b>	<b>88,861</b>	<b>Delivered:</b> 82,975

<a href="#">LM CT118</a>	<b>TX-OK-NM</b>	<a href="#">LM CT109</a>
<b>Neg. Cash Volume:</b>	0	<b>Dressed Formula Vol:</b> 12,287
<b>Live Steer Avg:</b>	N/A	<b>Steer/Heifer Avg:</b> \$239.57
<b>Live Heifer Avg:</b>	N/A	<b>Dressed Neg. Grid Vol:</b> 0
<b>Dressed Steer Avg:</b>	N/A	<b>Steer/Heifer Avg:</b> N/A
<b>Dressed Heifer Avg:</b>	N/A	<b>TOTAL VOLUME:</b> 12,287
<a href="#">LM CT106</a>	<b>TOTAL WK TO DATE VOLUME:</b>	<b>87,613</b>
<b>Committed:</b>	<b>21,400</b>	<b>Delivered:</b> 18,122

<a href="#">LM CT121</a>	<b>KANSAS</b>	<a href="#">LM CT109</a>
<b>Neg. Cash Volume:</b>	243	<b>Dressed Formula Vol:</b> 14,186
<b>Live Steer Avg:</b>	N/A	<b>Steer/Heifer Avg:</b> \$243.54
<b>Live Heifer Avg:</b>	N/A	<b>Dressed Neg. Grid Vol:</b> 1,070
<b>Dressed Steer Avg:</b>	N/A	<b>Steer/Heifer Avg:</b> \$243.08
<b>Dressed Heifer Avg:</b>	N/A	<b>TOTAL VOLUME:</b> 15,499
<a href="#">LM CT106</a>	<b>TOTAL WK TO DATE VOLUME:</b>	<b>79,095</b>
<b>Committed:</b>	<b>23,174</b>	<b>Delivered:</b> 26,600

<a href="#">LM CT124</a>	<b>NEBRASKA</b>	<a href="#">LM CT109</a>
<b>Neg. Cash Volume:</b>	364	<b>Dressed Formula Vol:</b> 9,008
<b>Live Steer Avg:</b>	\$153.51	<b>Steer/Heifer Avg:</b> \$253.28
<b>Live Heifer Avg:</b>	N/A	<b>Dressed Neg. Grid Vol:</b> 1,233
<b>Dressed Steer Avg:</b>	\$242.00	<b>Steer/Heifer Avg:</b> \$249.08
<b>Dressed Heifer Avg:</b>	\$242.00	<b>TOTAL VOLUME:</b> 10,605
<a href="#">LM CT106</a>	<b>TOTAL WK TO DATE VOLUME:</b>	<b>74,984</b>
<b>Committed:</b>	<b>22,274</b>	<b>Delivered:</b> 18,718

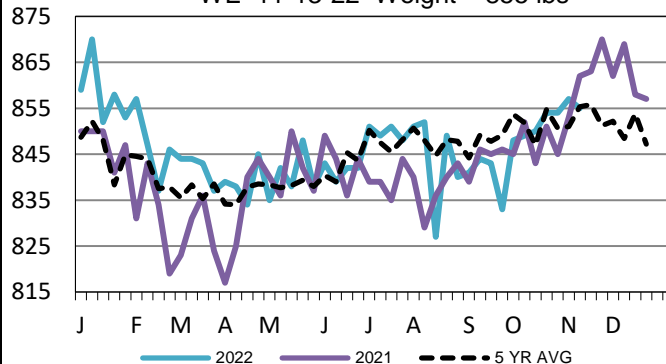
<a href="#">LM CT134</a>	<b>COLORADO</b>	<a href="#">LM CT109</a>
<b>Neg. Cash Volume:</b>	0	<b>Dressed Formula Vol:</b> 2,549
<b>Live Steer Avg:</b>	N/A	<b>Steer/Heifer Avg:</b> \$245.39
<b>Live Heifer Avg:</b>	N/A	<b>Dressed Neg. Grid Vol:</b> 646
<b>Dressed Steer Avg:</b>	N/A	<b>Steer/Heifer Avg:</b> \$244.61
<b>Dressed Heifer Avg:</b>	N/A	<b>TOTAL VOLUME:</b> 3,195
<a href="#">LM CT106</a>	<b>TOTAL WK TO DATE VOLUME:</b>	<b>23,183</b>
<b>Committed:</b>	<b>10,192</b>	<b>Delivered:</b> 4,892

<a href="#">LM CT137</a>	<b>IA-MN</b>	<a href="#">LM CT109</a>
<b>Neg. Cash Volume:</b>	4,839	<b>Dressed Formula Vol:</b> 3,292
<b>Live Steer Avg:</b>	\$154.97	<b>Steer/Heifer Avg:</b> \$252.03
<b>Live Heifer Avg:</b>	\$153.99	<b>Dressed Neg. Grid Vol:</b> 895
<b>Dressed Steer Avg:</b>	\$240.00	<b>Steer/Heifer Avg:</b> \$240.21
<b>Dressed Heifer Avg:</b>	\$244.00	<b>TOTAL VOLUME:</b> 9,026
<a href="#">LM CT106</a>	<b>TOTAL WK TO DATE VOLUME:</b>	<b>45,440</b>
<b>Committed:</b>	<b>11,821</b>	<b>Delivered:</b> 14,643

On Friday in the Western Cornbelt negotiated cash trading was slow on light to moderate demand. A few live purchases traded at 155.00. In the Southern Plains and Nebraska negotiated cash trading was mostly inactive on very light demand. Not enough purchases in any regions for a full market trend. Thursday was the last reported market in the Southern Plains and Western Cornbelt. In the Texas Panhandle live purchases traded from 150.00-151.00. In Kansas live purchases traded from 151.00-152.00. In the Western Cornbelt live and dressed purchases traded from 154.00-155.00 and at 242.00, respectively. In Nebraska the last reported live purchase market was on Thursday from 153.00-155.00 and Wednesday was the last reported dressed purchase market at 242.00.

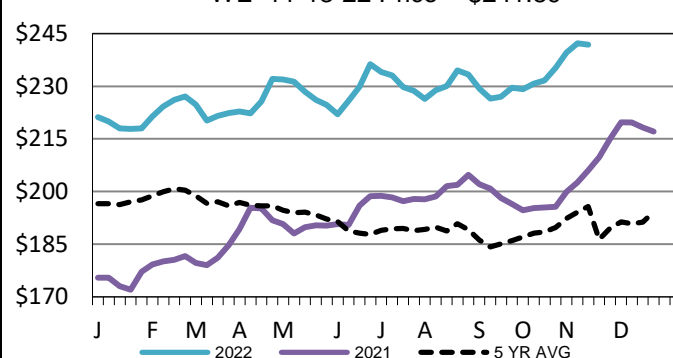
## TX-OK-NM Formula Carcass Weights

WE 11-13-22 Weight = 855 lbs



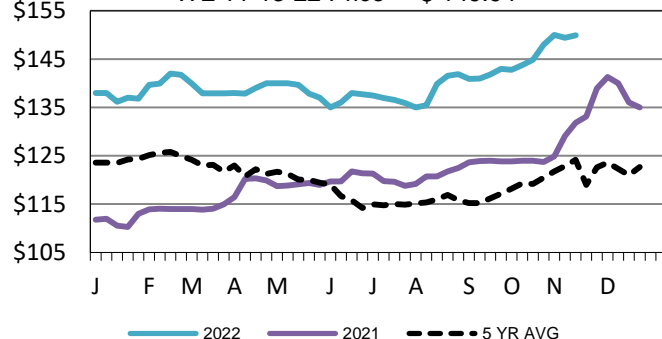
## Iowa-Minnesota Wkly Dress Steer Wtd Avg

WE 11-13-22 Price = \$241.89



## TX-OK-NM Wkly Live Steer Wtd Avg

WE 11-13-22 Price = \$ 149.94



## USDA Livestock, Poultry and Grain Market News

St. Joseph, Missouri

Phone: 816-676-7000

[stjoe.lpgmn@ams.usda.gov](mailto:stjoe.lpgmn@ams.usda.gov)