

## Daily Direct Steer and Heifer Slaughter Cattle Summary

For Trade on:

Thursday, November 17, 2022

<a href="#">LM CT100</a>	<b>5-AREA</b>	<a href="#">LM CT109</a>
<b>Neg. Cash Volume:</b>	37,007	<b>Dressed Formula Vol:</b> 54,598
<b>Live Steer Avg:</b>	\$153.15	<b>Steer/Heifer Avg:</b> \$244.33
<b>Live Heifer Avg:</b>	\$152.70	<b>Dressed Neg. Grid Vol:</b> 3,286
<b>Dressed Steer Avg:</b>	\$241.45	<b>Steer/Heifer Avg:</b> \$244.03
<b>Dressed Heifer Avg:</b>	\$242.74	<b>TOTAL VOLUME:</b> 94,891
<a href="#">LM CT106</a>	<b>TOTAL WK TO DATE VOLUME:</b>	<b>258,824</b>
<b>Committed:</b>	<b>81,500</b>	<b>Delivered:</b> 71,215

<a href="#">LM CT118</a>	<b>TX-OK-NM</b>	<a href="#">LM CT109</a>
<b>Neg. Cash Volume:</b>	4,311	<b>Dressed Formula Vol:</b> 16,043
<b>Live Steer Avg:</b>	\$150.82	<b>Steer/Heifer Avg:</b> \$238.94
<b>Live Heifer Avg:</b>	\$150.74	<b>Dressed Neg. Grid Vol:</b> 0
<b>Dressed Steer Avg:</b>	N/A	<b>Steer/Heifer Avg:</b> N/A
<b>Dressed Heifer Avg:</b>	N/A	<b>TOTAL VOLUME:</b> 20,354
<a href="#">LM CT106</a>	<b>TOTAL WK TO DATE VOLUME:</b>	<b>75,326</b>
<b>Committed:</b>	<b>22,648</b>	<b>Delivered:</b> 18,955

<a href="#">LM CT121</a>	<b>KANSAS</b>	<a href="#">LM CT109</a>
<b>Neg. Cash Volume:</b>	10,754	<b>Dressed Formula Vol:</b> 13,628
<b>Live Steer Avg:</b>	\$151.39	<b>Steer/Heifer Avg:</b> \$243.02
<b>Live Heifer Avg:</b>	\$151.63	<b>Dressed Neg. Grid Vol:</b> 379
<b>Dressed Steer Avg:</b>	N/A	<b>Steer/Heifer Avg:</b> \$244.60
<b>Dressed Heifer Avg:</b>	N/A	<b>TOTAL VOLUME:</b> 24,761
<a href="#">LM CT106</a>	<b>TOTAL WK TO DATE VOLUME:</b>	<b>63,596</b>
<b>Committed:</b>	<b>27,622</b>	<b>Delivered:</b> 15,179

<a href="#">LM CT124</a>	<b>NEBRASKA</b>	<a href="#">LM CT109</a>
<b>Neg. Cash Volume:</b>	8,136	<b>Dressed Formula Vol:</b> 14,960
<b>Live Steer Avg:</b>	\$154.46	<b>Steer/Heifer Avg:</b> \$247.83
<b>Live Heifer Avg:</b>	\$154.58	<b>Dressed Neg. Grid Vol:</b> 1,177
<b>Dressed Steer Avg:</b>	\$242.00	<b>Steer/Heifer Avg:</b> \$249.64
<b>Dressed Heifer Avg:</b>	\$242.00	<b>TOTAL VOLUME:</b> 24,273
<a href="#">LM CT106</a>	<b>TOTAL WK TO DATE VOLUME:</b>	<b>64,379</b>
<b>Committed:</b>	<b>12,646</b>	<b>Delivered:</b> 15,115

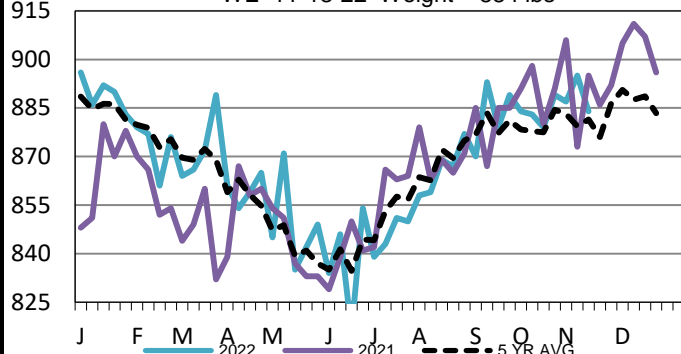
<a href="#">LM CT134</a>	<b>COLORADO</b>	<a href="#">LM CT109</a>
<b>Neg. Cash Volume:</b>	0	<b>Dressed Formula Vol:</b> 7,108
<b>Live Steer Avg:</b>	N/A	<b>Steer/Heifer Avg:</b> \$250.74
<b>Live Heifer Avg:</b>	N/A	<b>Dressed Neg. Grid Vol:</b> 80
<b>Dressed Steer Avg:</b>	N/A	<b>Steer/Heifer Avg:</b> \$239.22
<b>Dressed Heifer Avg:</b>	N/A	<b>TOTAL VOLUME:</b> 7,188
<a href="#">LM CT106</a>	<b>TOTAL WK TO DATE VOLUME:</b>	<b>19,988</b>
<b>Committed:</b>	<b>7,595</b>	<b>Delivered:</b> 9,120

<a href="#">LM CT137</a>	<b>IA-MN</b>	<a href="#">LM CT109</a>
<b>Neg. Cash Volume:</b>	13,806	<b>Dressed Formula Vol:</b> 3,162
<b>Live Steer Avg:</b>	\$154.41	<b>Steer/Heifer Avg:</b> \$247.57
<b>Live Heifer Avg:</b>	\$154.18	<b>Dressed Neg. Grid Vol:</b> 1,662
<b>Dressed Steer Avg:</b>	\$241.41	<b>Steer/Heifer Avg:</b> \$240.21
<b>Dressed Heifer Avg:</b>	\$243.66	<b>TOTAL VOLUME:</b> 18,630
<a href="#">LM CT106</a>	<b>TOTAL WK TO DATE VOLUME:</b>	<b>36,414</b>
<b>Committed:</b>	<b>10,989</b>	<b>Delivered:</b> 12,846

On Thursday in Kansas and Cornbelt cash trading was moderate with good demand. In Kansas, compared to last week, live purchases traded 1.00-2.00 higher from 151.00-152.00. In the Cornbelt, compared the last reported market on Wednesday, live purchases traded 1.00-2.00 higher from 154.00-155.00. Compared to last week dressed purchases traded steady to 2.00 higher at 242.00. In Nebraska cash trading was slow with moderate to good demand. Compared to the last reported market on Wednesday live purchases traded steady to 2.00 higher from 153.00-155.00. Not enough dressed purchases for a market trend. Wednesday saw dressed purchases at 242.00. In the Panhandle cash trading was slow on light demand. Compared to the last reported market on Wednesday live purchases traded steady to 1.00 higher from 150.00-151.00, with a few up to 152.00.

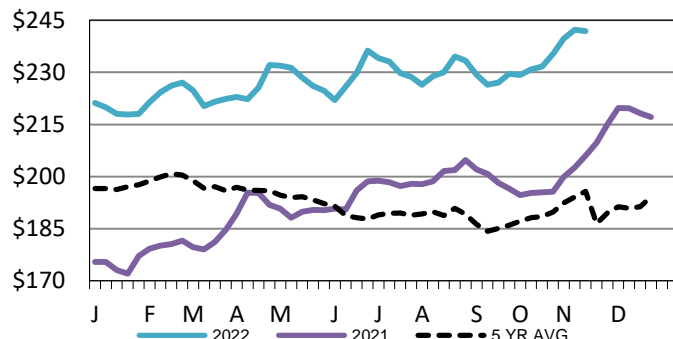
## Colorado Formula Carcass Weights

WE 11-13-22 Weight = 884 lbs



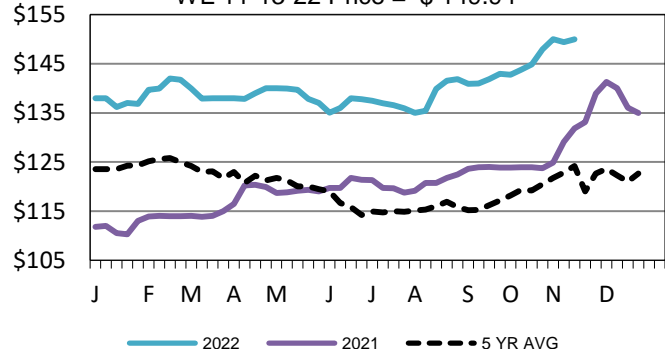
## Iowa-Minnesota Wkly Dress Steer Wtd Avg

WE 11-13-22 Price = \$241.89



## TX-OK-NM Wkly Live Steer Wtd Avg

WE 11-13-22 Price = \$ 149.94



## USDA Livestock, Poultry and Grain Market News

St. Joseph, Missouri

Phone: 816-676-7000

[stjoe.lpgmn@ams.usda.gov](mailto:stjoe.lpgmn@ams.usda.gov)