

## Daily Direct Steer and Heifer Slaughter Cattle Summary

For Trade on:

Friday, October 28, 2022

<a href="#">LM CT100</a>	<b>5-AREA</b>	<a href="#">LM CT109</a>
<b>Neg. Cash Volume:</b>	10,454	<b>Dressed Formula Vol:</b> 45,385
<b>Live Steer Avg:</b>	\$152.69	<b>Steer/Heifer Avg:</b> \$239.74
<b>Live Heifer Avg:</b>	\$152.80	<b>Dressed Neg. Grid Vol:</b> 3,374
<b>Dressed Steer Avg:</b>	\$240.00	<b>Steer/Heifer Avg:</b> \$235.18
<b>Dressed Heifer Avg:</b>	\$240.00	<b>TOTAL VOLUME:</b> 59,213
<a href="#">LM CT106</a>	<b>TOTAL WK TO DATE VOLUME:</b>	<b>309,691</b>
<b>Committed:</b>	<b>81,952</b>	<b>Delivered:</b> 80,640

<a href="#">LM CT118</a>	<b>TX-OK-NM</b>	<a href="#">LM CT109</a>
<b>Neg. Cash Volume:</b>	40	<b>Dressed Formula Vol:</b> 10,652
<b>Live Steer Avg:</b>	N/A	<b>Steer/Heifer Avg:</b> \$234.89
<b>Live Heifer Avg:</b>	\$148.00	<b>Dressed Neg. Grid Vol:</b> 0
<b>Dressed Steer Avg:</b>	N/A	<b>Steer/Heifer Avg:</b> N/A
<b>Dressed Heifer Avg:</b>	N/A	<b>TOTAL VOLUME:</b> 10,692
<a href="#">LM CT106</a>	<b>TOTAL WK TO DATE VOLUME:</b>	<b>76,777</b>
<b>Committed:</b>	<b>27,566</b>	<b>Delivered:</b> 18,783

<a href="#">LM CT121</a>	<b>KANSAS</b>	<a href="#">LM CT109</a>
<b>Neg. Cash Volume:</b>	0	<b>Dressed Formula Vol:</b> 13,961
<b>Live Steer Avg:</b>	N/A	<b>Steer/Heifer Avg:</b> \$240.00
<b>Live Heifer Avg:</b>	N/A	<b>Dressed Neg. Grid Vol:</b> 547
<b>Dressed Steer Avg:</b>	N/A	<b>Steer/Heifer Avg:</b> \$228.44
<b>Dressed Heifer Avg:</b>	N/A	<b>TOTAL VOLUME:</b> 14,508
<a href="#">LM CT106</a>	<b>TOTAL WK TO DATE VOLUME:</b>	<b>80,637</b>
<b>Committed:</b>	<b>14,998</b>	<b>Delivered:</b> 22,299

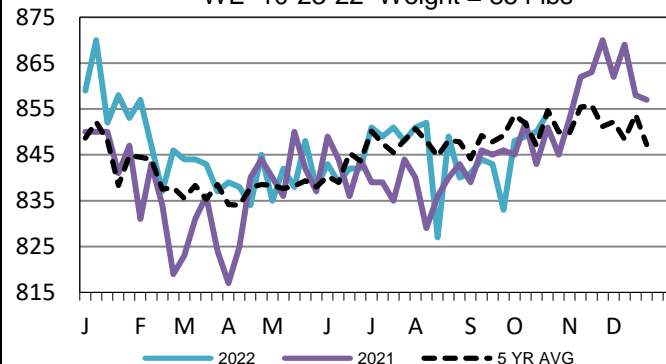
<a href="#">LM CT124</a>	<b>NEBRASKA</b>	<a href="#">LM CT109</a>
<b>Neg. Cash Volume:</b>	5,870	<b>Dressed Formula Vol:</b> 7,721
<b>Live Steer Avg:</b>	\$152.81	<b>Steer/Heifer Avg:</b> \$249.02
<b>Live Heifer Avg:</b>	\$152.68	<b>Dressed Neg. Grid Vol:</b> 1,116
<b>Dressed Steer Avg:</b>	\$240.00	<b>Steer/Heifer Avg:</b> \$237.46
<b>Dressed Heifer Avg:</b>	\$240.00	<b>TOTAL VOLUME:</b> 14,707
<a href="#">LM CT106</a>	<b>TOTAL WK TO DATE VOLUME:</b>	<b>70,985</b>
<b>Committed:</b>	<b>14,717</b>	<b>Delivered:</b> 17,329

<a href="#">LM CT134</a>	<b>COLORADO</b>	<a href="#">LM CT109</a>
<b>Neg. Cash Volume:</b>	0	<b>Dressed Formula Vol:</b> 10,388
<b>Live Steer Avg:</b>	N/A	<b>Steer/Heifer Avg:</b> \$237.43
<b>Live Heifer Avg:</b>	N/A	<b>Dressed Neg. Grid Vol:</b> 1,077
<b>Dressed Steer Avg:</b>	N/A	<b>Steer/Heifer Avg:</b> \$239.29
<b>Dressed Heifer Avg:</b>	N/A	<b>TOTAL VOLUME:</b> 11,465
<a href="#">LM CT106</a>	<b>TOTAL WK TO DATE VOLUME:</b>	<b>37,326</b>
<b>Committed:</b>	<b>14,310</b>	<b>Delivered:</b> 8,080

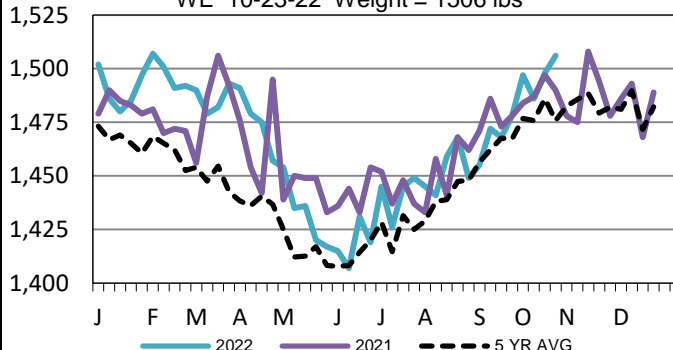
<a href="#">LM CT137</a>	<b>IA-MN</b>	<a href="#">LM CT109</a>
<b>Neg. Cash Volume:</b>	4,544	<b>Dressed Formula Vol:</b> 2,869
<b>Live Steer Avg:</b>	\$152.42	<b>Steer/Heifer Avg:</b> \$240.52
<b>Live Heifer Avg:</b>	\$152.90	<b>Dressed Neg. Grid Vol:</b> 699
<b>Dressed Steer Avg:</b>	\$240.00	<b>Steer/Heifer Avg:</b> \$231.93
<b>Dressed Heifer Avg:</b>	\$240.00	<b>TOTAL VOLUME:</b> 8,112
<a href="#">LM CT106</a>	<b>TOTAL WK TO DATE VOLUME:</b>	<b>45,072</b>
<b>Committed:</b>	<b>10,361</b>	<b>Delivered:</b> 14,149

For Friday in Nebraska and Western Cornbelt negotiated cash trading was slow on light demand. In Nebraska a few live and dressed purchases traded steady with the last reported market on Thursday from 152.00-153.00 and at 240.00, respectively. In the Western Cornbelt a few live purchases traded at 153.00. However, not enough for a full market trend. Thursday was the last fully reported market with live and dressed purchases from 151.00-153.00 and at 240.00, respectively. In the Southern Plains negotiated cash trading was at a standstill. Thursday was the last reported market in the Southern Plains live purchases traded at 150.00.

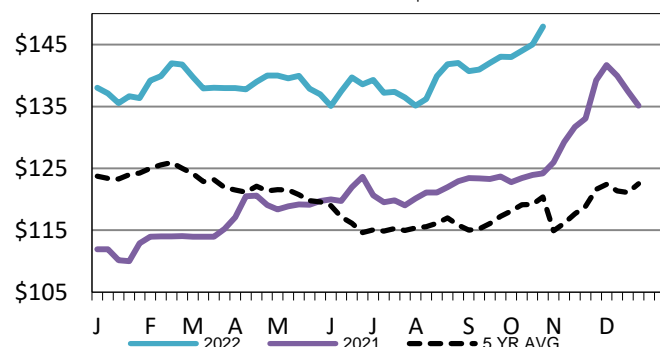
**TX-OK-NM Formula Carcass Weights**  
WE 10-23-22 Weight = 854 lbs



**5-Area Negotiated Cash Live Steer Weights**  
WE 10-23-22 Weight = 1506 lbs



**Kansas Weekly Live Steer Weighted Average**  
WE 10-23-22 Price = \$147.91



## USDA Livestock, Poultry and Grain Market News

St. Joseph, Missouri

Phone: 816-676-7000

[stjoe.lpgmn@ams.usda.gov](mailto:stjoe.lpgmn@ams.usda.gov)